



AVEIDRÁULICA

**CATÁLOGO
COMPONENTES
PNEUMÁTICOS**

Componentes Pneumáticos

Tratamento de ar comprimido
Válvulas de controlo
Válvulas de corte baixa pressão
Cilindros pneumáticos



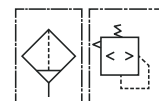
■ Elementos para o tratamento de ar comprimido	3
<i>Tratamento de ar comprimido</i>	
<hr/>	
■ Válvulas de manobra	6
<i>Válvulas de controlo</i>	
<hr/>	
■ Válvulas pneumáticas em linha	17
<i>Válvulas de controlo</i>	
<hr/>	
■ Válvulas de corte baixa pressão	21
<i>Válvulas de corte baixa pressão</i>	
<hr/>	
■ Cilindros pneumáticos e acessórios ISO 15552	26
<i>Cilindros pneumáticos</i>	
<hr/>	
■ Microcilindros pneumáticos e acessórios ISO 6432	32
<i>Cilindros pneumáticos</i>	
<hr/>	
■ Cilindros pneumáticos de eixo duplo	36
<i>Cilindros pneumáticos</i>	



Filtro-regulador estándar metálico



Metallic filter pressure reducer
 Filtre-régulateur standard métallique
 Filtro regolatore standard metallico

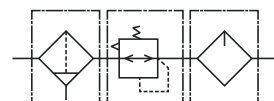


Part nº Referencia	THREAD ROSCA	MAX. FLOW (l/min) CAUDAL MÁX.	MAX. PRESSURE (bar) PRESIÓN MÁX. (bar)
FR 1/4 M	1/4" BSP	550	10
FR 1/2 M	1/2" BSP	4000	10
FR 1 M	1" BSP	5500	10

Filtro-regulador + lubricador compacto



Filter-pressure reducer + compact lubricant
 Filtre-régulateur + lubrificateur compact
 Filtro regolatore + lubrificatore compatto

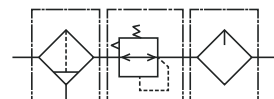


Part nº Referencia	THREAD ROSCA	MAX. FLOW (l/min) CAUDAL MÁX.	MAX. PRESSURE (bar) PRESIÓN MÁX. (bar)
FR+L 1/4 M	1/4" BSP	500	10
FR+L 1/2 M	1/2" BSP	3000	10
FR+L 1 M	1" BSP	4000	10

Filtro + regulador + lubricador (3 cuerpos)



Pressure reducer + lubricant + filter (3 bodies)
 Filtre + régulateur + lubrificateur (3 corps)
 Filtro + regolatore + lubrificatore (3 corpi)



Part nº Referencia	THREAD ROSCA	MAX. FLOW (l/min) CAUDAL MÁX.	MAX. PRESSURE (bar) PRESIÓN MÁX. (bar)
FRL 1/4 M	1/4" BSP	500	10
FRL 1/2 M	1/2" BSP	4000	10
FRL 1 M	1" BSP	5000	10

Filtro Metálico



Metallic Filter
 Filtre métallique
 Filtro metallico

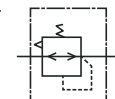


Part nº Referencia	THREAD ROSCA	MAX. FLOW (l/min) CAUDAL MÁX.	MAX. PRESSURE (bar) PRESIÓN MÁX. (bar)
FIL 1/4 M	1/4" BSP	750	10
FIL 1/2 M	1/2" BSP	4000	10
FIL 1 M	1" BSP	7000	10

Regulador



Pressure reducer
 Régulateur
 Regolatore di pressione



Part nº Referencia	THREAD ROSCA	FLOW (l/min) CAUDAL (l/min)	MAX. PRESSURE (bar) PRESIÓN MÁX. (bar)
REG 1/4	1/4" BSP	550	10
REG 1/2	1/2" BSP	6000	10
REG 1	1" BSP	8000	10



Lubricador

Atomised lubricant
Lubrificateur
Lubrificatore atomizzatore



Part nº Referencia	THREAD ROSCA	MAX. FLOW (l/min) CAUDAL MÁX.	MAX. PRESSURE (bar) PRESIÓN MÁX. (bar)
LUB 1/4 M	1/4" BSP	800	10
LUB 1/2 M	1/2" BSP	5000	10
LUB 1 M	1" BSP	7000	10

COMBINACIÓN DE GRUPOS DE FILTRACIÓN FILTRATION GROUP COMBINATION

F+R+L



FR+L



Disponemos de todos los accesorios de acoplamiento | We have all the assembly accessories



Manómetro



Pressure gauge
Manomètre
Manometro

Part nº Referencia	THREAD ROSCA	Ø OUTER Ø EXT.	DESCRIPTION DESCRIPCIÓN	SCALE (bar) ESCALA (bar)
MP4318012	1/8	43mm	Dorsal / Rear	0 - 12
MP5318012	1/8	53mm	Dorsal / Rear	0 - 12
MR5318012	1/8	53mm	Vertical	0 - 12

Soporte para FRL



Support bracket for FRL
Support pour FRL
Supporto per FRL

Part nº Referencia	DESCRIPTION DESCRIPCIÓN
SOPORTE FRL14	1/4 M (espaciador tipo L) / 1/4 M (L type spacer)
SOPORTE FRL12	1/2 M (espaciador tipo L) / 1/2 M (L type spacer)
SOPORTE FRL1	1 M (espaciador tipo L) / 1 M (L type spacer)

Soporte para FR+L



Support bracket for FR+L
Support pour FR+L
Supporto per FR+L

Part nº Referencia	DESCRIPTION DESCRIPCIÓN
SOPORTE FR+L 14	1/4 M (espaciador tipo T) / 1/4 M (T type spacer)
SOPORTE FR+L 12	1/2 M (espaciador tipo T) / 1/2 M (T type spacer)
SOPORTE FR+L 1	1 M (espaciador tipo T) / 1 M (T type spacer)

Membrana para REG



Diaphragm for REG
Membrane pour REG
Membrana per REG

Part nº Referencia	DESCRIPTION DESCRIPCIÓN
MEMBRANAREG14	Para REG 1/4 / For REG 1/4
MEMBRANAREG1	Para REG 1 y REG 1/2 / For REG 1 and REG 1/2

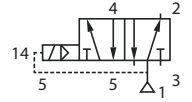
Válvulas de control
- Válvulas de manobra



Válvulas con acc. eléctrico - 5/2 monoestable



Solenoid pneumatic valve 5/2 monostable
Vannes 5/2 avec actionnement électrique mono-stable
Elettrovalvole pneumatiche - 5/2 monostabili



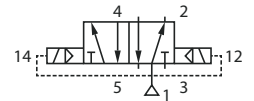
Part nº Referencia	THREAD ROSCA	DESCRIPTION DESCRIPCIÓN
NEU100070	1/8" BSP	Cuerpo / Body 1/8"
NEU100073	1/8" BSP	Cuerpo / Body 1/4"
NEU100075	1/4" BSP	Cuerpo / Body 1/4"
NEU100080	3/8" BSP	Cuerpo / Body 3/8"
NEU100085	1/2" BSP	Cuerpo / Body 1/2"

Sin bobinas y sin conectores. / Without coils and without connectors. / Sans bobines et sans connecteurs. / Senza bobina e senza connettori.

Válvulas con acc. eléctrico - 5/2 biestable



Solenoid pneumatic valve 5/2 bistable
Vannes 5/2 avec actionnement électrique bi-stable
Elettrovalvole pneumatiche - 5/2 bistabili



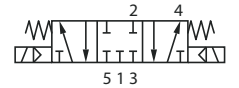
Part nº Referencia	THREAD ROSCA	DESCRIPTION DESCRIPCIÓN
NEU100090	1/8" BSP	Cuerpo / Body 1/8"
NEU100093	1/8" BSP	Cuerpo / Body 1/4"
NEU100095	1/4" BSP	Cuerpo / Body 1/4"
NEU100100	3/8" BSP	Cuerpo / Body 3/8"
NEU100105	1/2" BSP	Cuerpo / Body 1/2"

Sin bobinas y sin conectores. / Without coils and without connectors. / Sans bobines et sans connecteurs. / Senza bobina e senza connettori.

Válvulas con acc. eléctrico - 5/3 centro cerrado



Solenoid pneumatic valve 5/3 closed center
Vannes 5/3 avec actionnement électrique centre fermé
Elettrovalvole pneumatiche - 5/3 C. C.



Part nº Referencia	THREAD ROSCA	DESCRIPTION DESCRIPCIÓN
NEU100110	1/8" BSP	Cuerpo / Body 1/8"
NEU100113	1/8" BSP	Cuerpo / Body 1/4"
NEU100115	1/4" BSP	Cuerpo / Body 1/4"
NEU100118	3/8" BSP	Cuerpo / Body 3/8"
NEU100120	1/2" BSP	Cuerpo / Body 1/2"

Sin bobinas y sin conectores. / Without coils and without connectors. / Sans bobines et sans connecteurs. / Senza bobina e senza connettori.

Pedales eléctricos



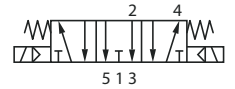
Electric foot pedal
Pédales électriques
Interruttore a pedale

Part nº Referencia	DESCRIPTION DESCRIPCIÓN
PML	Sin protección / Without protection



Válvulas con acc. eléctrico - 5/3 centro abierto

Solenoid pneumatic valve 5/3 open center
Vannes 5/3 avec actionnement électrique centre ouvert
Elettrovalvole pneumatiche - 5/3 C.A.

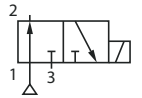


Part nº Referencia	THREAD ROSCA	DESCRIPTION DESCRIPCIÓN
NEU100125	1/8" BSP	Cuerpo / Body 1/8"
NEU100128	1/8" BSP	Cuerpo / Body 1/4"
NEU100130	1/4" BSP	Cuerpo / Body 1/4"
NEU100133	3/8" BSP	Cuerpo / Body 3/8"
NEU100135	1/2" BSP	Cuerpo / Body 1/2"

Sin bobinas y sin conectores. / Without coils and without connectors. / Sans bobines et sans connecteurs. / Senza bobina e senza connettori.

Válvulas con acc. eléctrico 3/2 - normalmente abierta

Solenoid pneumatic valve 3/2 normally open
Vannes avec actionnement électrique 3/2 normalement ouverte
Elettrovalvole pneumatiche - 3/2 N.A.

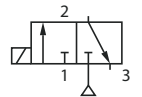


Part nº Referencia	THREAD ROSCA	DESCRIPTION DESCRIPCIÓN
NEU100620	1/8" BSP	Cuerpo / Body 1/8"
NEU100623	1/8" BSP	Cuerpo / Body 1/4"
NEU100625	1/4" BSP	Cuerpo / Body 1/4"
NEU100628	3/8" BSP	Cuerpo / Body 3/8"
NEU100630	1/2" BSP	Cuerpo / Body 1/2"

Sin bobinas y sin conectores. / Without coils and without connectors. / Sans bobines et sans connecteurs. / Senza bobina e senza connettori.

Válvulas con acc. eléctrico 3/2 - normalmente cerrada

Solenoid pneumatic valve 3/2 normally closed
Vannes avec actionnement électrique 3/2 normalement fermée
Elettrovalvole pneumatiche - 3/2 N.C.



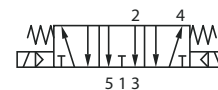
Part nº Referencia	THREAD ROSCA	DESCRIPTION DESCRIPCIÓN
NEU100600	1/8" BSP	Cuerpo / Body 1/8"
NEU100603	1/8" BSP	Cuerpo / Body 1/4"
NEU100605	1/4" BSP	Cuerpo / Body 1/4"
NEU100608	3/8" BSP	Cuerpo / Body 3/8"
NEU100610	1/2" BSP	Cuerpo / Body 1/2"

Sin bobinas y sin conectores. / Without coils and without connectors. / Sans bobines et sans connecteurs. / Senza bobina e senza connettori.



Válvulas con acc. eléctrico - 5/3 centro abierto

Solenoid pneumatic valve 5/3 open center
Vannes 5/3 avec actionnement électrique centre ouvert
Elettrovalvole pneumatiche - 5/3 C.A.

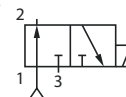


Part nº Referencia	THREAD ROSCA	DESCRIPTION DESCRIPCIÓN
NEU100125	1/8" BSP	Cuerpo / Body 1/8"
NEU100128	1/8" BSP	Cuerpo / Body 1/4"
NEU100130	1/4" BSP	Cuerpo / Body 1/4"
NEU100133	3/8" BSP	Cuerpo / Body 3/8"
NEU100135	1/2" BSP	Cuerpo / Body 1/2"

Sin bobinas y sin conectores. / Without coils and without connectors. / Sans bobines et sans connecteurs. / Senza bobina e senza connettori.

Válvulas con acc. eléctrico 3/2 - normalmente abierta

Solenoid pneumatic valve 3/2 normally open
Vannes avec actionnement électrique 3/2 normalement ouverte
Elettrovalvole pneumatiche - 3/2 N.A.

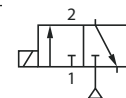


Part nº Referencia	THREAD ROSCA	DESCRIPTION DESCRIPCIÓN
NEU100620	1/8" BSP	Cuerpo / Body 1/8"
NEU100623	1/8" BSP	Cuerpo / Body 1/4"
NEU100625	1/4" BSP	Cuerpo / Body 1/4"
NEU100628	3/8" BSP	Cuerpo / Body 3/8"
NEU100630	1/2" BSP	Cuerpo / Body 1/2"

Sin bobinas y sin conectores. / Without coils and without connectors. / Sans bobines et sans connecteurs. / Senza bobina e senza connettori.

Válvulas con acc. eléctrico 3/2 - normalmente cerrada

Solenoid pneumatic valve 3/2 normally closed
Vannes avec actionnement électrique 3/2 normalement fermée
Elettrovalvole pneumatiche - 3/2 N.C.



Part nº Referencia	THREAD ROSCA	DESCRIPTION DESCRIPCIÓN
NEU100600	1/8" BSP	Cuerpo / Body 1/8"
NEU100603	1/8" BSP	Cuerpo / Body 1/4"
NEU100605	1/4" BSP	Cuerpo / Body 1/4"
NEU100608	3/8" BSP	Cuerpo / Body 3/8"
NEU100610	1/2" BSP	Cuerpo / Body 1/2"

Sin bobinas y sin conectores. / Without coils and without connectors. / Sans bobines et sans connecteurs. / Senza bobina e senza connettori.



Placas base para válvulas neumáticas 5/2, 5/3

Subplates for pneumatic valves 5/2 & 5/3
Plaques pour valves pneumatiques 5/2 et 5/3
Piastra di base per valvole pneumatiche 5/2, 5/3



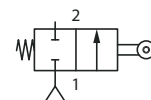
Part nº Referencia	THREAD ROSCA	ELEMENTS NR. Nº ELEMENTOS
NEU100940	1/8" BSP	2
NEU100945	1/8" BSP	3
NEU100950	1/4" BSP	4
NEU100955	1/8" BSP	5
NEU100960	1/8" BSP	6
NEU100965	1/8" BSP	7
NEU100970	1/8" BSP	8
NEU100975	1/4" BSP	2
NEU100980	1/4" BSP	3
NEU100985	1/4" BSP	4
NEU100990	1/4" BSP	5
NEU100995	1/4" BSP	6
NEU101000	1/4" BSP	7
NEU101005	1/4" BSP	8
NEU101010	3/8" BSP	2
NEU101015	3/8" BSP	3
NEU101020	3/8" BSP	4
NEU101025	3/8" BSP	5
NEU101030	3/8" BSP	6
NEU101035	3/8" BSP	7
NEU101040	3/8" BSP	8
NEU101045	1/2" BSP	2
NEU101050	1/2" BSP	3
NEU101055	1/2" BSP	4
NEU101060	1/2" BSP	5
NEU101065	1/2" BSP	6
NEU101070	1/2" BSP	7
NEU101075	1/2" BSP	8

Válvulas de rodillo bidireccional 2/2 monoestable normalmente cerrada

Fixed roller 2/2 monostable normally closed
Vannes à rouleau bidirectionnel 2/2 monostable normalement fermée
Valvola a rotella bidirezionale 2/2 monostabile N.C.



Part nº Referencia	THREAD ROSCA	DESCRIPTION DESCRIPCIÓN
NEU100370	1/8" BSP	2/2 Monoestable NC

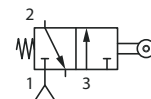


Válvulas de rodillo bidireccional 3/2 monoestable normalmente cerrada

Fixed roller 3/2 monostable normally closed
Vannes à rouleau bidirectionnel 3/2 monostable normalement fermée
Valvola a rotella bidirezionale 3/2 monostabile N.C.



Part nº Referencia	THREAD ROSCA	DESCRIPTION DESCRIPCIÓN
NEU100375	1/8" BSP	3/2 Monoestable N.C.
NEU100380	1/4" BSP	3/2 Monoestable N.C.





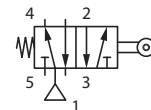
Válvulas de rodillo bidireccional 5/2 monoestable



Fixed roller 5/2 monostable

Vannes à rouleau bidirectionnel 5/2 monostable

Valvola a rotella bidirezionale 5/2 monostabile



Part nº Referencia	THREAD ROSCA	DESCRIPTION DESCRIPCIÓN
NEU100390	1/8" BSP	5/2 Monoestable
NEU100395	1/4" BSP	5/2 Monoestable

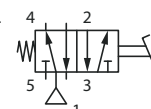
Pedales neumáticos 5/2 biestable con protección



Pneumatic foot pedal 5/2 bistable with protection

Pédales pneumatiques 5/2 bistable avec protection

Pedali pneumatici 5/2 bistabili con protezione



Part nº Referencia	THREAD ROSCA	MAX. PRESSURE (bar) PRESIÓN MAX. (bar)
PC 1/4 B	1/4" BSP	12

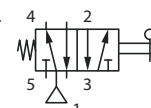
Pedales neumáticos 5/2 monoestable sin protección



Pneumatic foot pedal 5/2 monostable without protection

Pédales pneumatiques monostable 5/2 sans protection

Pedali pneumatici 5/2 monostabili senza protezione



Part nº Referencia	THREAD ROSCA	MAX. PRESSURE (bar) PRESIÓN MAX. (bar)
PS 1/4	1/4" BSP	12

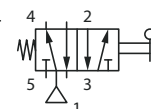
Pedales neumáticos 5/2 monoestable con protección



Pneumatic foot pedal 5/2 monostable with protection

Pédales pneumatiques 5/2 monostable avec protection

Pedali pneumatici 5/2 monostabili con protezione



Part nº Referencia	THREAD ROSCA	MAX. PRESSURE (bar) PRESIÓN MAX. (bar)
PC 1/4 M	1/4" BSP	12

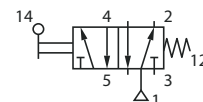
Válvulas con acc. palanca 5/2 monoestable



Manual pneumatic valve 5/2 monostable

Vannes avec actionnement levier 5/2 monostables

Valvole ad azionamento a leva - 5/2 monostabile



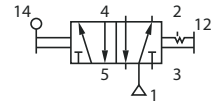
Part nº Referencia	THREAD ROSCA
NEU100505	1/8" BSP
NEU100510	1/4" BSP
NEU100515	3/8" BSP
NEU100518	1/2" BSP



Válvulas con acc. palanca 5/2 biestable



Manual pneumatic valve 5/2 bistable
Vannes avec actionnement levier 5/2 bistables
Valvole ad azionamento a leva 5/2 bistabile

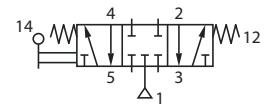


Part nº Referencia	THREAD ROSCA	€
NEU100520	1/8" BSP	27,53
NEU100525	1/4" BSP	23,76
NEU100530	3/8" BSP	26,84
NEU100533	1/2" BSP	53,01

Válvulas con acc. palanca 5/3 centro cerrado monoestable



Manual pneumatic valve 5/3 closed center monostable
Vannes avec actionnement levier 5/3 monostables
Valvole ad azionamento a leva - 5/3 C.C monostabile

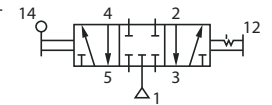


Part nº Referencia	THREAD ROSCA
NEU100535	1/8" BSP
NEU100540	1/8" BSP
NEU100545	3/8" BSP
NEU100548	1/2" BSP

Válvulas con acc. palanca 5/3 centro cerrado biestable



Manual pneumatic valve 5/3 closed center bistable
Vannes avec actionnement levier 5/3 centre fermé bistables
Valvole ad azionamento a leva - 5/3 C.C bistabile

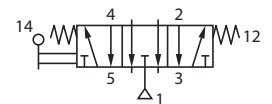


Part nº Referencia	THREAD ROSCA	DESCRIPTION DESCRIPCIÓN
NEU100565	1/8" BSP	Talla B
NEU100570	1/4" BSP	Talla A
NEU100575	3/8" BSP	-
NEU100578	1/2" BSP	-

Válvulas con acc. palanca 5/3 centro abierto monoestable



Manual pneumatic valve 5/3 open center monostable
Vannes avec actionnement levier 5/3 centre ouvert monostables
Valvole ad azionamento a leva - 5/3 C.A monostabile

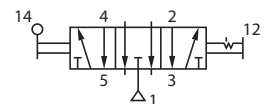


Part nº Referencia	THREAD ROSCA
NEU100550	1/8" BSP
NEU100555	1/4" BSP
NEU100560	3/8" BSP
NEU100563	1/2" BSP

Válvulas con acc. palanca 5/3 centro abierto biestable



Manual pneumatic valve 5/3 open center bistable
Vannes avec actionnement levier 5/3 centre ouvert bistables
Valvole ad azionamento a leva - 5/3 C.A bistabile



Part nº Referencia	THREAD ROSCA
NEU100580	1/8" BSP
NEU100585	1/4" BSP
NEU100590	3/8" BSP
NEU100593	1/2" BSP

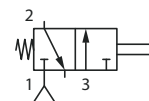


Válvulas pulsador raso 3/2 normalmente cerrada



Shrouded push button 3/2 normally closed
Vannes à poussoir court 3/2 normalement fermée
Valvole a pulsante raso 3/2 NC

Part nº Referencia	THREAD ROSCA	DESCRIPTION DESCRIPCIÓN
NEU100260	1/8" BSP	Rojo / Red

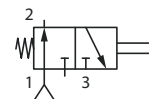


Válvulas pulsador raso 3/2 normalmente abierta



Shrouded push button 3/2 normally open
Vannes à poussoir court 3/2 normalement ouverte
Valvole a pulsante raso 3/2 NA

Part nº Referencia	THREAD ROSCA	DESCRIPTION DESCRIPCIÓN
NEU100270	1/8" BSP	Rojo / Red

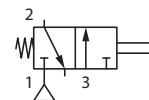


Válvulas pulsador raso 3/2 normalmente cerrada



Shrouded push button 3/2 normally closed
Vannes à poussoir court 3/2 normalement fermée
Valvole a pulsante raso 3/2 NC

Part nº Referencia	THREAD ROSCA	DESCRIPTION DESCRIPCIÓN
NEU100280	1/8" BSP	Rojo / Red

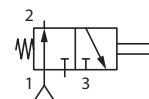


Válvulas pulsador raso 3/2 normalmente abierta



Shrouded push button 3/2 normally open
Vannes à poussoir court 3/2 normalement ouverte
Valvole a pulsante raso 3/2 NA

Part nº Referencia	THREAD ROSCA	DESCRIPTION DESCRIPCIÓN
NEU100290	1/8" BSP	Rojo / Red

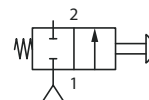


Válvulas pulsador normal 2/2 normalmente cerrada



Push button 2/2 normally closed
Vannes à poussoir 2/2 normalement fermée
Valvole a pulsante standard 2/2 NC

Part nº Referencia	THREAD ROSCA	DESCRIPTION DESCRIPCIÓN
NEU100300	1/8" BSP	2/2 N.C.

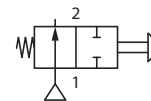




Válvulas pulsador normal 2/2 normalmente abierta



Push button 2/2 normally open
Vannes à poussoir 2/2 normalement ouverte
Valvole a pulsante standard 2/2 NA

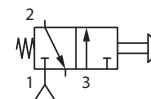


Part nº Referencia	THREAD ROSCA	DESCRIPTION DESCRIPCIÓN
NEU100305	1/8" BSP	2/2 N.A.

Válvulas pulsador normal 3/2 normalmente cerrada



Push button 3/2 normally closed
Vannes à poussoir 3/2 normalement fermée
Valvole a pulsante standard 3/2 NC

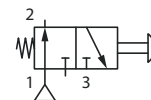


Part nº Referencia	THREAD ROSCA	DESCRIPTION DESCRIPCIÓN
NEU100310	1/4" BSP	3/2 N.C.

Válvulas pulsador normal 3/2 normalmente abierta



Push button 3/2 normally open
Vannes à poussoir 3/2 normalement ouverte
Valvole a pulsante standard 3/2 NA

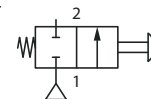


Part nº Referencia	THREAD ROSCA	DESCRIPTION DESCRIPCIÓN
NEU100315	1/4" BSP	3/2 N.A.

Válvulas pulsador emergencia 2/2 normalmente cerrada



Head push button 2/2 normally closed
Vannes à poussoir d'urgence 2/2 normalement fermée
Valvole a pulsante di emergenza 2/2 NC

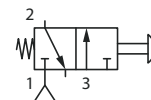


Part nº Referencia	THREAD ROSCA	DESCRIPTION DESCRIPCIÓN
NEU100320	1/8" BSP	Rojo / Red

Válvulas pulsador emergencia 3/2 biestable normalmente cerrada



Head push button 3/2 normally closed
Vannes à poussoir d'urgence 3/2 normalement fermée
Valvole a pulsante di emergenza 3/2 NC bistabile



Part nº Referencia	THREAD ROSCA	DESCRIPTION DESCRIPCIÓN
NEU100330	1/8" BSP	Rojo / Red

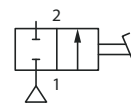
Válvulas de control
- Válvulas de manobra



Válvulas selectoras palanca giratoria 2/2 biestable



Selector valves rotating lever 2/2 bistable
Vannes sélectrices à levier tournant 2/2 bistable
Valvole con selettore girevole 2/2 bistabile

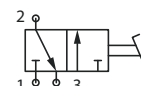


Part nº Referencia	THREAD ROSCA
NEU100340	1/8" BSP

Válvulas selectoras palanca giratoria 3/2 biestable



Selector valves rotating lever 3/2 bistable
Vannes sélectrices à levier tournant 3/2 bistable
Valvole con selettore girevole 3/2 bistabile

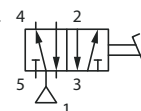


Part nº Referencia	THREAD ROSCA
NEU100345	1/8" BSP

Válvulas selectoras palanca giratoria 5/2 biestable



Selector valves rotating lever 5/2 bistable
Vannes sélectrices à levier tournant 5/2 bistable
Valvole con selettore girevole 5/2 bistabile

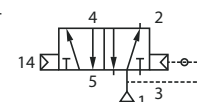


Part nº Referencia	THREAD ROSCA
NEU100350	1/8" BSP

Válvulas con acc. neumático 5/2 monoestable



Pneumatic control valve 5/2 monoestable
Vannes avec actionnement pneum.5/2 monostable
Valvole ad azionamento pneumatico 5/2 monostabile

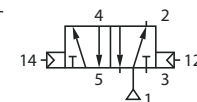


Part nº Referencia	THREAD ROSCA
NEU100000	1/8"
NEU100005	1/4"
NEU100010	3/8"
NEU100015	1/2"

Válvulas con acc. neumático 5/2 biestable



Pneumatic control valve 5/2 bistable
Vannes avec actionnement pneum. 5/2 bistable
Valvole ad azionamento pneumatico 5/2 bistabile



Part nº Referencia	THREAD ROSCA
NEU100020	1/8"
NEU100025	1/4"
NEU100030	3/8"
NEU100035	1/2"

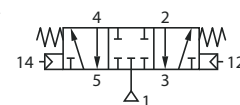
Válvulas de control
- Válvulas de manobra



Válvulas con acc. neumático 5/3 centro cerrado



Pneumatic control valve 5/3 closed center
Vannes avec actionnement pneum. 5/3 centre fermé
Valvole ad azionamento pneumatico 5/3 C.C

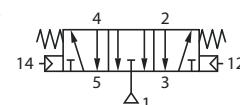


Part nº Referencia	THREAD ROSCA
NEU100040	1/8"
NEU100045	1/4"
NEU100050	1/2"

Válvulas con acc. neumático 5/3 centro abierto



Pneumatic control valve 5/3 open center
Vannes avec actionnement pneum. 5/3 centre ouvert
Valvole ad azionamento pneumatico 5/3 C.A



Part nº Referencia	THREAD ROSCA
NEU100055	1/8"
NEU100060	1/4"
NEU100065	1/2"

Silenciador bronce largo



Nickel-plated brass silencer (long)
Silencieux en bronze long
Silenziatore in ottone nickelato -lungo

Part nº Referencia	THREAD ROSCA
SE 1/8	1/8"
SE 1/4	1/4"
SE 3/8	3/8"
SE 1/2	1/2"

Silenciador bronce corto



Nickel-plated brass silencer (short)
Silencieux en bronze court
Silenziatore in ottone nickelato -corto

Part nº Referencia	THREAD ROSCA
SCQ 1/8	1/8"
SCQ 1/4	1/4"
SCQ 3/8	3/8"
SCQ 1/2	1/2"

Silenciador malla acero



Steel braid silencer
Silencieux tresse acier
Silenziatore in treccia di acciaio

Part nº Referencia	THREAD ROSCA
SFE 1/8	1/8"
SFE 1/4	1/4"
SFE 3/8	3/8"
SFE 1/2	1/2"

Válvulas de control
- Válvulas de manobra



Silenciador regulable



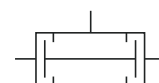
Regulator silencer
Silencieux réglable
Silenziatore regolabile

Part nº Referencia	THREAD ROSCA	MAX. PRESSURE (bar) PRESIÓN MAX. (bar)
SVE 1/8	1/8"	12
SVE 1/4	1/4"	12
SVE 3/8	3/8"	12
SVE 1/2	1/2"	12

Válvula de paso corredera 3 vías



Sleeve valves
Vannes de passage tiroir 3 voies
Valvola di chiusura scorrevole 3 vie BSP



Part nº Referencia	THREAD ROSCA
6060 1/8	1/8"
6060 1/4	1/4"
6060 3/8	3/8"
6060 1/2	1/2"

Grifo purga



Drain valve
Robinet de purge
Valvola di spurgo

Part nº Referencia	THREAD ROSCA
16A 1/2	1/2"
16A 1/4	1/4"
16A 1/8	1/8"
16A 3/8	3/8"

Nebulizador



Nebulizer
Brumificateur
Nebulizzatore

Part nº Referencia	DESCRIPTION DESCRIPCIÓN
NEU100501	Cuadrado / Square

Válvulas de controlo

- Válvulas pneumáticas em linha



Válvula bola mini H-H



Mini ball valve female - female
Robinet mini femelle - femelle
Mini valvola a sfera F-F

Part nº Referencia	THREAD ROSCA	MAX. PRESSURE (bar) PRESIÓN MAX. (bar)
6300 1/8	1/8"	20
6300 1/4	1/4"	20
6300 3/8	3/8"	20
6300 1/2	1/2"	20

Válvula bola mini M-H



Mini ball valve male - female
Robinet mini mâle - femelle
Mini valvola a sfera M-F

Part nº Referencia	THREAD ROSCA	MAX. PRESSURE (bar) PRESIÓN MAX. (bar)
6310 1/8	1/8"	20
6310 1/4	1/4"	20
6310 3/8	3/8"	20
6310 1/2	1/2"	20

Válvula bola mini hexagonal H-H



Mini ball valve female - female
Robinet mini hexagonal femelle - femelle
Mini valvola esagonale a sfera F-F

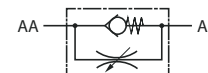
Part nº Referencia	THREAD ROSCA	MAX. PRESSURE (bar) PRESIÓN MAX. (bar)
6065 1/8	1/8"	20
6065 1/4	1/4"	20
6065 3/8	3/8"	20
6065 1/2	1/2"	20

Regulador flujo unidireccional



Unidirectional flow regulator
Régulateur de débit unidirectionnel
Regolatori di flusso unidirezionali

Part nº Referencia	THREAD ROSCA	MAX. PRESSURE (bar) PRESIÓN MAX. (bar)
8850 1/8	1/8"	10
8850 1/4	1/4"	10
8850 3/8	3/8"	10
8850 1/2	1/2"	10



Regulador flujo bidireccional



Bidirectional flow regulator
Régulateur de débit bidirectionnel
Regolatori di flusso bidirezionali

Part nº Referencia	THREAD ROSCA	MAX. PRESSURE (bar) PRESIÓN MAX. (bar)
8860 1/8	1/8"	10
8860 1/4	1/4"	10
8860 3/8	3/8"	10
8860 1/2	1/2"	10



Válvulas de controlo

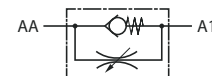
- Válvulas pneumáticas em linha



Regulador flujo (regulación pomo)



Unidirectional flow restrictor valve (hand control)
Régulateur de débit unidirectionnel (contrôle manuel)
Regolatore di flusso (regolazione a pomello)

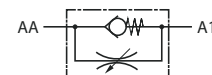


Part nº Referencia	PIPE TUBO	THREAD ROSCA
8965 6/4 1/8	6/4 mm	1/8"
8965 6/4 1/4	6/4 mm	1/4"
8965 8/6 1/8	8/6 mm	1/8"
8965 8/6 1/4	8/6 mm	1/4"
8965 8/6 3/8	8/6 mm	3/8"
8965 10/8 1/4	10/8 mm	1/4"
8965 10/8 3/8	10/8 mm	3/8"
8965 12/10 3/8	12/10 mm	3/8"
8965 12/10 1/2	12/10 mm	1/2"

Regulador flujo (regulación tornillo)



Unidirectional flow restrictor valve (screwdriver control)
Régulateur de débit unidirectionnel (contrôle tournavis)
Regolatore di flusso (regolazione a vite)

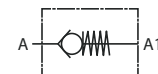


Part nº Referencia	PIPE TUBO	THREAD ROSCA
8953 6 1/8	6 mm	1/8"
8953 6 1/4	6 mm	1/4"
8953 8 1/8	8 mm	1/8"
8953 8 1/4	8 mm	1/4"
8953 8 3/8	8 mm	3/8"
8953 10 1/4	10 mm	1/4"
8953 10 3/8	10 mm	3/8"
8953 12 3/8	12 mm	3/8"
8953 12 1/2	12 mm	1/2"

Antirretorno H-H



Check valve valve female - female
Antiretour femelle - femelle
Valvola di ritegno in linea H-H

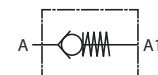


Part nº Referencia	THREAD ROSCA	MAX. PRESSURE (bar) PRESIÓN MAX. (bar)
6062 1/8	1/8"	8 bar
6062 1/4	1/4"	8 bar
6062 3/8	3/8"	8 bar
6062 1/2	1/2"	8 bar

Antirretorno H-H con membrana



Check valve valve female - female with membrane
Antiretour femelle - femelle avec membrane
Valvola di ritegno in linea H-H - con membrana



Part nº Referencia	THREAD ROSCA
6036 3/8	3/8"
6036 1/2	1/2"
6036 3/4	3/4"
6036 1	1"

Válvulas de controlo

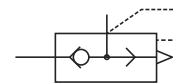
- Válvulas pneumáticas em linha



Válvula de escape rápido BSP



Quick exhaust valves
Vannes d'échappement rapide
Valvola di scarico rapido BSP

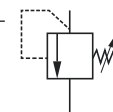


Part nº Referencia	THREAD ROSCA
6050 1/8	1/8"
6050 1/4	1/4"
6050 3/8	3/8"
6050 1/2	1/2"

Válvula seguridad regulable BSP



Adjustable relief valve
Vannes de sécurité réglable
Valvola di sicurezza regolabile BSP



Part nº Referencia	THREAD ROSCA	PRESSURE (Bar) TARAJE (BAR)
VS 1/8 8-12	1/8"	8 - 12
VS 1/8 13-16	1/8"	13 - 16
VS 1/4 8-12	1/4"	8 - 12
VS 1/4 13-16	1/4"	13 - 16
VS 3/8 8-12	3/8"	8 - 12
VS 3/8 13-16	3/8"	13 - 16
VS 1/2 0.5-5	1/2"	0,5 - 5
VS 1/2 8-12	1/2"	8 - 12
VS 1/2 13-16	1/2"	13 - 16
VS 3/4 8-12	3/4"	8 - 12
VS 3/4 13-16	3/4"	13 - 16
VS 1 8-12	1"	8 - 12
VS 1 13-16	1"	13 - 16

Válvulas de controlo

- Válvulas pneumáticas em linha

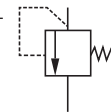


Válvula seguridad taraje fijo BSP

Relief valve

Vannes de sécurité tarage fixe

Valvola di sicurezza taratura fissa BSP



Part nº Referencia	THREAD ROSCA	PRESSURE (Bar) TARAJE (BAR)	DIAMETER (mm) DIÁMETRO (mm)
VSN 1/8 8	1/8"	8	6 mm
VSN 1/8 10	1/8"	10	6 mm
VSN 1/8 12	1/8"	12	6 mm
VSN 1/8 15	1/8"	15	6 mm
VSN 1/4 8	1/4"	8	6 mm
VSN 1/4 10	1/4"	10	6 mm
VSN 1/4 12	1/4"	12	6 mm
VSN 1/4 15	1/4"	15	6 mm
VSN 3/8 8	3/8"	8	10 mm
VSN 3/8 10	3/8"	10	10 mm
VSN 3/8 12	3/8"	12	10 mm
VSN 3/8 15	3/8"	15	10 mm
VSN 1/2 8	1/2"	8	10 mm
VSN 1/2 10	1/2"	10	10 mm
VSN 1/2 12	1/2"	12	10 mm
VSN 1/2 15	1/2"	15	10 mm
VSN 3/4 8	3/4"	8	15 mm
VSN 3/4 10	3/4"	10	15 mm
VSN 3/4 12	3/4"	12	15 mm
VSN 3/4 15	3/4"	15	15 mm
VSN 1 8	1"	8	15 mm
VSN 1 10	1"	10	15 mm
VSN 1 12	1"	12	15 mm
VSN 1 15	1"	15	15 mm



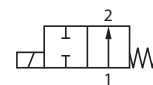
Válvula corte baja presión con bobina normalmente abierta



Low pressure valve with coil normally open

Vanne à clapet basse pression avec bobine normalement ouverte

Valvola di chiusura bassa pressione NA con bobina



Part nº Referencia	THREAD ROSCA	MIN. PRESS. (bar) PRESIÓN MÍN. (bar)	VOLTAGE (V) VOLTAJE (V)	MAX. PRESSURE (bar) PRESIÓN MÁX. (bar)
VCBP14NA12CC	1/4" BSP	0	12 VDC	10
VCBP38NA12CC	3/8" BSP	0.5	12 VDC	10
VCBP12NA12CC	1/2" BSP	0.5	12 VDC	10
VCBP34NA12CC	3/4" BSP	0.5	12 VDC	10
VCBP1NA12CC	1" BSP	0.5	12 VDC	18
VCBP14NA24CC	1/4" BSP	0	24 VDC	10
VCBP38NA24CC	3/8" BSP	0.5	24 VDC	10
VCBP12NA24CC	1/2" BSP	0.5	24 VDC	10
VCBP34NA24CC	3/4" BSP	0.5	24 VDC	10
VCBP1NA24CC	1" BSP	0.5	24 VDC	18
VCBP14NA24CA	1/4" BSP	0	24 VAC	16
VCBP38NA24CA	3/8" BSP	0.5	24 VAC	16
VCBP12NA24CA	1/2" BSP	0.5	24 VAC	16
VCBP34NA24CA	3/4" BSP	0.5	24 VAC	12
VCBP1NA24CA	1" BSP	0.5	24 VAC	12
VCBP14NA110CA	1/4" BSP	0	110 VAC	16
VCBP38NA110CA	3/8" BSP	0.5	110 VAC	16
VCBP12NA110CA	1/2" BSP	0.5	110 VAC	16
VCBP34NA110CA	3/4" BSP	0.5	110 VAC	12
VCBP1NA110CA	1" BSP	0.5	110 VAC	12
VCBP14NA220CA	1/4" BSP	0	220 VAC	16
VCBP38NA220CA	3/8" BSP	0.5	220 VAC	16
VCBP12NA220CA	1/2" BSP	0.5	220 VAC	16
VCBP34NA220CA	3/4" BSP	0.5	220 VAC	12
VCBP1NA220CA	1" BSP	0.5	220 VAC	12



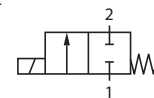
Válvula corte baja presión con bobina normalmente cerrada



Low pressure valve with coil normally closed

Vanne à clapet basse pression avec bobine normalement fermée

Valvola di chiusura bassa pressione NC con bobina



Part nº Referencia	THREAD ROSCA	MIN. PRESS. (bar) PRESIÓN MIN. (bar)	VOLTAGE (V) VOLTAJE (V)	MAX. PRESSURE (bar) PRESIÓN MAX. (bar)
VCBP14NC12CC	1/4" BSP	0	12 VDC	16
VCBP38NC12CC	3/8" BSP	0.5	12 VDC	16
VCBP12NC12CC	1/2" BSP	0.5	12 VDC	16
VCBP34NC12CC	3/4" BSP	0.5	12 VDC	13
VCBP1NC12CC	1" BSP	0.5	12 VDC	10
VCBP14NC24CC	1/4" BSP	0	24 VDC	16
VCBP38NC24CC	3/8" BSP	0.5	24 VDC	16
VCBP12NC24CC	1/2" BSP	0.5	24 VDC	16
VCBP34NC24CC	3/4" BSP	0.5	24 VDC	13
VCBP1NC24CC	1" BSP	0.5	24 VDC	10
VCBP14NC24CA	1/4" BSP	0	24 VAC	18
VCBP38NC24CA	3/8" BSP	0.5	24 VAC	18
VCBP12NC24CA	1/2" BSP	0.5	24 VAC	18
VCBP34NC24CA	3/4" BSP	0.5	24 VAC	16
VCBP1NC24CA	1" BSP	0.5	24 VAC	12
VCBP14NC110CA	1/4" BSP	0	110 VAC	18
VCBP38NC110CA	3/8" BSP	0.5	110 VAC	18
VCBP12NC110CA	1/2" BSP	0.5	110 VAC	18
VCBP34NC110CA	3/4" BSP	0.5	110 VAC	16
VCBP1NC110CA	1" BSP	0.5	110 VAC	12
VCBP14NC220CA	1/4" BSP	0	220 VAC	18
VCBP38NC220CA	3/8" BSP	0.5	220 VAC	18
VCBP12NC220CA	1/2" BSP	0.5	220 VAC	18
VCBP34NC220CA	3/4" BSP	0.5	220 VAC	16
VCBP1NC220CA	1" BSP	0.5	220 VAC	12

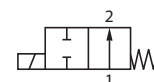
Válvula corte baja presión sin bobina normalmente abierta



Low pressure valve without coil normally open

Vanne à clapet basse pression sans bobine normalement ouverte

Valvola di chiusura bassa pressione NA senza bobina



Part nº Referencia	THREAD ROSCA	MIN. PRESS. (bar) PRESIÓN MIN. (bar)	MAX. PRESSURE (bar) PRESIÓN MAX. (bar)
VCBP14NA	1/4" BSP	0	16 (VAC) / 10 (VDC)
VCBP38NA	3/8" BSP	0,5	16 (VAC) / 10 (VDC)
VCBP12NA	1/2" BSP	0,5	16 (VAC) / 10 (VDC)
VCBP34NA	3/4" BSP	0,5	12 (VAC) / 10 (VDC)
VCBP1NA	1" BSP	0,5	12 (VAC) / 18 (VDC)
VCBP114NA	1"1/4 BSP	0,5	10 (VAC) / 10 (VDC)
VCBP112NA	1"1/2 BSP	0,5	10 (VAC) / 10 (VDC)
VCBP2NA	2" BSP	0,5	10 (VAC) / 10 (VDC)



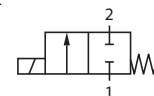
Válvula corte baja presión sin bobina normalmente cerrada



Low pressure valve without coil- normally closed

Vanne à clapet basse pression sans bobine normalement fermée

Valvola di chiusura bassa pressione NC senza bobina



Part nº Referencia	THREAD ROSCA	MIN. PRESS. (bar) PRESIÓN MÍN. (bar)	MAX. PRESSURE (bar) PRESIÓN MAX. (bar)
VCBP14NC	1/4" BSP	0	18 (VAC) / 16 (VDC)
VCBP38NC	3/8" BSP	0,5	18 (VAC) / 16 (VDC)
VCBP12NC	1/2" BSP	0,5	18 (VAC) / 16 (VDC)
VCBP34NC	3/4" BSP	0,5	16 (VAC) / 13 (VDC)
VCBP1NC	1" BSP	0,5	12 (VAC) / 10 (VDC)
VCBP114NC	1"1/4 BSP	0,5	10 (VAC) / 10 (VDC)
VCBP112NC	1"1/2 BSP	0,5	10 (VAC) / 10 (VDC)
VCBP2NC	2" BSP	0,5	10 (VAC) / 10 (VDC)

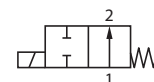
Válvulas corte baja presión INOX 316 normalmente abierta con bobina



316 S.S. Low pressure valve with coil normally open

Vanne à clapet basse pression INOX 316 normalement ouverte avec bobine

Valvole di chiusura bassa pressione NA con bobina INOX 316



Part nº Referencia	THREAD ROSCA	MIN. PRESS. (bar) PRESIÓN MÍN. (bar)	VOLTAGE (V) VOLTAJE (V)	MAX. PRESSURE (bar) PRESIÓN MAX. (bar)
Z VCBP14NA12CC	1/4" BSP	0	12 VDC	10
Z VCBP38NA12CC	3/8" BSP	0.5	12 VDC	10
Z VCBP12NA12CC	1/2" BSP	0.5	12 VDC	10
Z VCBP14NA24CC	1/4" BSP	0	24 VDC	10
Z VCBP38NA24CC	3/8" BSP	0.5	24 VDC	10
Z VCBP12NA24CC	1/2" BSP	0.5	24 VDC	10
Z VCBP14NA24CA	1/4" BSP	0	24 VAC	16
Z VCBP38NA24CA	3/8" BSP	0.5	24 VAC	16
Z VCBP12NA24CA	1/2" BSP	0.5	24 VAC	16
Z VCBP14NA110CA	1/4" BSP	0	110 VAC	16
Z VCBP38NA110CA	3/8" BSP	0.5	110 VAC	16
Z VCBP12NA110CA	1/2" BSP	0.5	110 VAC	16
Z VCBP14NA220CA	1/4" BSP	0	220 VAC	16
Z VCBP38NA220CA	3/8" BSP	0.5	220 VAC	16
Z VCBP12NA220CA	1/2" BSP	0.5	220 VAC	16

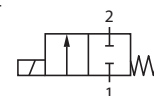
Válvulas corte baja presión INOX 316 normalmente cerrada con bobina



316 S.S. Low pressure valve with coil normally closed

Vanne à clapet basse pression INOX 316 normalement fermée avec bobine

Valvole di chiusura bassa pressione NC con bobina INOX 316



Part nº Referencia	THREAD ROSCA	MIN. PRESS. (bar) PRESIÓN MÍN. (bar)	VOLTAGE (V) VOLTAJE (V)	MAX. PRESSURE (bar) PRESIÓN MAX. (bar)
Z VCBP14NC12CC	1/4" BSP	0	12 VDC	16
Z VCBP38NC12CC	3/8" BSP	0.5	12 VDC	16
Z VCBP12NC12CC	1/2" BSP	0.5	12 VDC	16
Z VCBP14NC24CC	1/4" BSP	0	24 VDC	16
Z VCBP38NC24CC	3/8" BSP	0.5	24 VDC	16
Z VCBP12NC24CC	1/2" BSP	0.5	24 VDC	16
Z VCBP14NC24CA	1/4" BSP	0	24 VAC	18
Z VCBP38NC24CA	3/8" BSP	0.5	24 VAC	18
Z VCBP12NC24CA	1/2" BSP	0.5	24 VAC	18
Z VCBP14NC110CA	1/4" BSP	0	110 VAC	18
Z VCBP38NC110CA	3/8" BSP	0.5	110 VAC	18
Z VCBP12NC110CA	1/2" BSP	0.5	110 VAC	18
Z VCBP14NC220CA	1/4" BSP	0	220 VAC	18
Z VCBP38NC220CA	3/8" BSP	0.5	220 VAC	18
Z VCBP12NC220CA	1/2" BSP	0.5	220 VAC	18



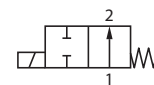
Válvulas corte baja presión INOX 316 normalmente abierta sin bobina



316 S.S. Low pressure valve without coil normally open

Vanne à clapet basse pression INOX 316 normalement ouverte sans bobine

Valvole di chiusura bassa pressione NA senza bobina INOX 316



Part nº Referencia	THREAD ROSCA	MIN. PRESS. (bar) PRESIÓN MÍN. (bar)	MAX. PRESSURE (bar) PRESIÓN MAX. (bar)
Z VCBP14NA	1/4" BSP	0	16(VAC)/10(VDC)
Z VCBP38NA	3/8" BSP	0,5	16(VAC)/10(VDC)
Z VCBP12NA	1/2" BSP	0,5	16(VAC)/10(VDC)

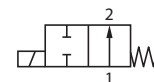
Válvulas corte baja presión INOX 316 normalmente cerrada sin bobina



316 S.S. Low pressure valve without coil normally closed

Vanne à clapet basse pression INOX 316 normalement fermée sans bobine

Valvole di chiusura bassa pressione NC senza bobina INOX 316



Part nº Referencia	THREAD ROSCA	MIN. PRESS. (bar) PRESIÓN MÍN. (bar)	MAX. PRESSURE (bar) PRESIÓN MAX. (bar)
Z VCBP14NC	1/4" BSP	0	18(VAC)/16(VDC)
Z VCBP38NC	3/8" BSP	0,5	18(VAC)/16(VDC)
Z VCBP12NC	1/2" BSP	0,5	18(VAC)/16(VDC)



Bobinas válvula corte



Coils
Bobines
Bobine

Part nº Referencia	DESCRIPTION DESCRIPCIÓN
C-12CC NC	12 VDC NC
C-24CC NC	24 VDC NC
C-220CA NC	220 VAC NC
C-24CA NC	24 VAC NC
C-110CA NC	110 VAC NC
C-12CC NA	12 VDC NA / 12 VDC NO
C-24CC NA	24 VDC NA / 24 VDC NO
C-220CA NA	220 VAC NA / 220 VAC NO
C-24CA NA	24 VAC NA / 24 VAC NO
C-110CA NA	110 VAC NA / 110 VAC NA /

Incluye conector / Connector included / Avec connecteur / Compreso il conettore

Accesorios Membranas



Accessories
Accessoires
Accessori membrane

Part nº Referencia	DESCRIPTION DESCRIPCIÓN
MEMBRANAVCBP1	Para / For VCBP1NA/VCBP1NC
MEMBRANAVCBP12	Para / For VCBP12NA/VCBP12NC
MEMBRANAVCBP14	Para / For VCBP14NA/VCBP14NC
MEMBRANAVCBP34	Para / For VCBP34NA/VCBP34NC
MEMBRANAVCBP38	Para / For VCBP38NA/VCBP38NC
MEMBRANAZVCBP12	Para / For Z VCBP12NA/Z VCBP12NC
MEMBRANAZVCBP14	Para / For Z VCBP14NA/Z VCBP14NC
MEMBRANAZVCBP38	Para / For Z VCBP38NA/Z VCBP38NC

Conectores válvula corte



Connectors
Connecteurs
Conettori

Part nº Referencia	DESCRIPTION DESCRIPCIÓN
CONC1	conector CC/CA estrecho / narrow CC/CA connector 21,5x28,8x41,2
CONC3	conector estandar DIN43650 / standard DIN43650 connector 30x32x42



Cilindros D.E. magnéticos ISO 15552 Ø32

Pneumatic cylinders D.A. ISO 15552 Ø32

Vérins pneumatiques D.E. magnétiques ISO 15552 Ø32

Cilindri D.E. magnetici ISO 15552 Ø32



Part nº Referencia	THREAD ROSCA	STROKE (mm) CARRERA (mm)	
CNM0320025	M6	1/8" BSP	25
CNM0320050	M6	1/8" BSP	50
CNM0320075	M6	1/8" BSP	75
CNM0320080	M6	1/8" BSP	80
CNM0320100	M6	1/8" BSP	100
CNM0320125	M6	1/8" BSP	125
CNM0320150	M6	1/8" BSP	150
CNM0320160	M6	1/8" BSP	160
CNM0320200	M6	1/8" BSP	200
CNM0320250	M6	1/8" BSP	250
CNM0320300	M6	1/8" BSP	300
CNM0320320	M6	1/8" BSP	320
CNM0320350	M6	1/8" BSP	350
CNM0320400	M6	1/8" BSP	400
CNM0320450	M6	1/8" BSP	450
CNM0320500	M6	1/8" BSP	500

Cilindros D.E. magnéticos ISO 15552 Ø40

Pneumatic cylinders D.A. ISO 15552 Ø40

Vérins pneumatiques D.E. magnétiques ISO 15552 Ø40

Cilindri D.E. magnetici ISO 15552 Ø40



Part nº Referencia	THREAD ROSCA	STROKE (mm) CARRERA (mm)	
CNM0400025	M6	1/4" BSP	25
CNM0400050	M6	1/4" BSP	50
CNM0400075	M6	1/4" BSP	75
CNM0400080	M6	1/4" BSP	80
CNM0400100	M6	1/4" BSP	100
CNM0400125	M6	1/4" BSP	125
CNM0400150	M6	1/4" BSP	150
CNM0400160	M6	1/4" BSP	160
CNM0400200	M6	1/4" BSP	200
CNM0400250	M6	1/4" BSP	250
CNM0400300	M6	1/4" BSP	300
CNM0400320	M6	1/4" BSP	320
CNM0400350	M6	1/4" BSP	350
CNM0400400	M6	1/4" BSP	400
CNM0400450	M6	1/4" BSP	450
CNM0400500	M6	1/4" BSP	500



Cilindros D.E. magnéticos ISO 15552 Ø50

Pneumatic cylinders D.A. ISO 15552 Ø50

Vérins pneumatiques D.E. magnétiques ISO 15552 Ø50

Cilindri D.E. magnetici ISO 15552 Ø50



Part nº Referencia	THREAD ROSCA	STROKE (mm) CARRERA (mm)	
CNM0500025	M8	1/4" BSP	25
CNM0500050	M8	1/4" BSP	50
CNM0500075	M8	1/4" BSP	75
CNM0500080	M8	1/4" BSP	80
CNM0500100	M8	1/4" BSP	100
CNM0500125	M8	1/4" BSP	125
CNM0500150	M8	1/4" BSP	150
CNM0500160	M8	1/4" BSP	160
CNM0500200	M8	1/4" BSP	200
CNM0500250	M8	1/4" BSP	250
CNM0500300	M8	1/4" BSP	300
CNM0500320	M8	1/4" BSP	320
CNM0500350	M8	1/4" BSP	350
CNM0500400	M8	1/4" BSP	400

Cilindros D.E. magnéticos ISO 15552 Ø63

Pneumatic cylinders D.A. ISO 15552 Ø63

Vérins pneumatiques D.E. magnétiques ISO 15552 Ø63

Cilindri D.E. magnetici ISO 15552 Ø63



Part nº Referencia	THREAD ROSCA	STROKE (mm) CARRERA (mm)	
CNM0630025	M8	3/8" BSP	25
CNM0630050	M8	3/8" BSP	50
CNM0630075	M8	3/8" BSP	75
CNM0630080	M8	3/8" BSP	80
CNM0630100	M8	3/8" BSP	100
CNM0630125	M8	3/8" BSP	125
CNM0630150	M8	3/8" BSP	150
CNM0630160	M8	3/8" BSP	160
CNM0630200	M8	3/8" BSP	200
CNM0630250	M8	3/8" BSP	250
CNM0630300	M8	3/8" BSP	300
CNM0630320	M8	3/8" BSP	320
CNM0630350	M8	3/8" BSP	350
CNM0630400	M8	3/8" BSP	400
CNM0630450	M8	3/8" BSP	450
CNM0630500	M8	3/8" BSP	500



Cilindros D.E. magnéticos ISO 15552 Ø80

Pneumatic cylinders D.A. ISO 15552 Ø80

Vérins pneumatiques D.E. magnétiques ISO 15552 Ø80

Cilindri D.E. magnetici ISO 15552 Ø80



Part nº Referencia	THREAD ROSCA		STROKE (mm) CARRERA (mm)
CNM0800025	M10	3/8" BSP	25
CNM0800050	M10	3/8" BSP	50
CNM0800075	M10	3/8" BSP	75
CNM0800080	M10	3/8" BSP	80
CNM0800100	M10	3/8" BSP	100
CNM0800125	M10	3/8" BSP	125
CNM0800150	M10	3/8" BSP	150
CNM0800160	M10	3/8" BSP	160
CNM0800200	M10	3/8" BSP	200
CNM0800250	M10	3/8" BSP	250
CNM0800300	M10	3/8" BSP	300
CNM0800320	M10	3/8" BSP	320
CNM0800350	M10	3/8" BSP	350
CNM0800400	M10	3/8" BSP	400
CNM0800450	M10	3/8" BSP	450
CNM0800500	M10	3/8" BSP	500

Cilindros D.E. magnéticos ISO 15552 Ø100

Pneumatic cylinders D.A. ISO 15552 Ø100

Vérins pneumatiques D.E. magnétiques ISO 15552 Ø100

Cilindri D.E. magnetici ISO 15552 Ø100



Part nº Referencia	THREAD ROSCA		STROKE (mm) CARRERA (mm)
CNM1000025	M10	1/2" BSP	25
CNM1000050	M10	1/2" BSP	50

Cilindros D.E. magnéticos ISO 15552 Ø125

Pneumatic cylinders D.A. ISO 15552 Ø125

Vérins pneumatiques D.E. magnétiques ISO 15552 Ø125

Cilindri D.E. magnetici ISO 15552 Ø125



Part nº Referencia	THREAD ROSCA		STROKE (mm) CARRERA (mm)
CNM1250025	M12	1/2" BSP	25
CNM1250050	M12	1/2" BSP	50
CNM1250075	M12	1/2" BSP	75
CNM1250080	M12	1/2" BSP	80
CNM1250100	M12	1/2" BSP	100
CNM1250125	M12	1/2" BSP	125
CNM1250150	M12	1/2" BSP	150
CNM1250160	M12	1/2" BSP	160
CNM1250200	M12	1/2" BSP	200
CNM1250250	M12	1/2" BSP	250
CNM1250300	M12	1/2" BSP	300
CNM1250320	M12	1/2" BSP	320
CNM1250350	M12	1/2" BSP	350
CNM1250400	M12	1/2" BSP	400
CNM1250450	M12	1/2" BSP	450
CNM1250500	M12	1/2" BSP	500



Cilindros D.E. magnéticos ISO 15552 Ø160

Pneumatic cylinders D.A. ISO 15552 Ø160

Vérins pneumatiques D.E. magnétiques ISO 15552 Ø160

Cilindri D.E. magnetici ISO 15552 Ø160



Part nº Referencia	THREAD ROSCA		STROKE (mm) CARRERA (mm)
CNM1600025	M16	3/4" BSP	25
CNM1600080	M16	3/4" BSP	80
CNM1600100	M16	3/4" BSP	100
CNM1600125	M16	3/4" BSP	125
CNM1600160	M16	3/4" BSP	180

Cilindros D.E. magnéticos ISO 15552 Ø200

Pneumatic cylinders D.A. ISO 15552 Ø200

Vérins pneumatiques D.E. magnétiques ISO 15552 Ø200

Cilindri D.E. magnetici ISO 15552 Ø200



Part nº Referencia	THREAD ROSCA		STROKE (mm) CARRERA (mm)
CNM2000025	M16	3/4" BSP	25
CNM2000050	M16	3/4" BSP	50
CNM2000080	M16	3/4" BSP	80
CNM2000100	M16	3/4" BSP	100
CNM2000125	M16	3/4" BSP	125
CNM2000160	M16	3/4" BSP	160

Charnela hembra para cilindro ISO 15552

Female pivot in steel ISO 15552

Articulation femelle pour vérin ISO 15552

Cerniera femmina cilindro ISO 15552



Part nº Referencia	DESCRIPTION DESCRIPCIÓN
CHCN032	32mm
CHCN040	40mm
CHCN050	50mm
CHCN063	63mm
CHCN080	80mm

Charnela macho para cilindro ISO 15552

Male pivot in steel ISO 15552

Articulation mâle pour vérins ISO 15552

Cerniera maschio cilindro ISO 15552



Part nº Referencia	DESCRIPTION DESCRIPCIÓN
CMCN032	32mm
CMCN040	40mm
CMCN050	50mm
CMCN063	63mm
CMCN080	80mm
CMCN100	100mm
CMCN125	125mm



Contra charnela para cilindro ISO 15552



Right angles joint in steel ISO 15552
 Contre-chape pour vérins ISO 15552
 Contro cerniera cilindro ISO 15552

Part nº Referencia	DESCRIPTION DESCRIPCIÓN
CCCN032	32mm
CCCN040	40mm
CCCN050	50mm
CCCN063	63mm
CCCN080	80mm

Brida para cilindro ISO 15552



Front or rear flange in zinc-plated steel ISO 15552
 Flasque pour vérins ISO 15552
 Flangia per cilindro ISO 15552

Part nº Referencia	DESCRIPTION DESCRIPCIÓN
BCN032	32mm
BCN040	40mm
BCN050	50mm
BCN063	63mm
BCN080	80mm

Pata para cilindro ISO 15552



Foot mounting in zinc-plated steel ISO 15552
 Pied pour vérins ISO 15552
 Piedino basso per cilindro ISO 15552

Part nº Referencia	DESCRIPTION DESCRIPCIÓN
PCN032	32mm
PCN040	40mm
PCN050	50mm
PCN063	63mm
PCN080	80mm
PCN100	100mm
PCN125	125mm

Horquilla para cilindro ISO 15552



Female rod clevis ISO 15552
 Chape de tige pour vérins ISO 15552
 Forcella femmina per cilindro ISO 15552

Part nº Referencia	DESCRIPTION DESCRIPCIÓN
HCN032	32mm
HCN040	40mm
HCN050	50mm
HCN063	63mm
HCN080	80mm
HCN125	125mm



Rótula para cilindro ISO 15552



Oscillating eye ISO 15552

Rotule pour vérin ISO 15552

Snodo sferico per cilindro ISO 15552

Part nº Referencia	DESCRIPTION DESCRIPCIÓN
RCN032	32mm
RCN040	40mm
RCN050	50mm
RCN063	63mm
RCN080	80mm

Sensores para cilindro ISO 15552



Sensors for ISO 15552 pivot

Capteurs pour vérin ISO 15552

Sensori per cilindro ISO 15552

Part nº Referencia	DESCRIPTION DESCRIPCIÓN	VOLTAGE (V) VOLTAJE (V)
SENSORHX31R	Tipo Reed Switch, 2 cables / Reed Switch type, 2 cables	5-240V (DC/AC)
SENSORHX31N	Tipo NPN, 3 cables / NPN type, 3 cables	5-30V (DC)



Microcilindros D.E. magnéticos ISO 6432 Ø12

Micro-cylinders D.A. ISO 6432 Ø12

Micro-vérins D.E. magnétiques ISO 6432 Ø12

Microcilindri D.E magnetici ISO 6432 Ø12



Part nº Referencia	STROKE (mm) CARRERA (mm)
MCDM12010	10
MCDM12025	25
MCDM12050	50
MCDM12075	75
MCDM12100	100
MCDM12125	125
MCDM12150	150
MCDM12200	200
MCDM12250	250
MCDM12300	300
MCDM12350	350
MCDM12400	400

Microcilindros D.E.magnéticos ISO 6432 Ø16

Micro-cylinders D.A. ISO 6432 Ø16

Micro-vérins D.E. magnétiques ISO 6432 Ø16

Microcilindri D.E magnetici ISO 6432 Ø16



Part nº Referencia	STROKE (mm) CARRERA (mm)
MCDM16010	10
MCDM16025	25
MCDM16050	50
MCDM16075	75
MCDM16100	100
MCDM16125	125
MCDM16150	150
MCDM16200	200
MCDM16250	250
MCDM16300	300
MCDM16350	350
MCDM16400	400

Microcilindros D.E.magnéticos ISO 6432 Ø20

Micro-cylinders D.A. ISO 6432 Ø20

Micro-vérins D.E. magnétiques ISO 6432 Ø20

Microcilindri D.E magnetici ISO 6432 Ø20



Part nº Referencia	STROKE (mm) CARRERA (mm)
MCDM20010	10
MCDM20025	25
MCDM20050	50
MCDM20075	75
MCDM20100	100
MCDM20125	125
MCDM20150	150
MCDM20200	200
MCDM20250	250
MCDM20300	300
MCDM20350	350
MCDM20400	400



Microcilindros D.E. magnéticos ISO 6432 Ø25

Micro-cylinders D.A. ISO 6432 Ø25

Micro-vérins D.E. magnétiques ISO 6432 Ø25

Microcilindri D.E magnetici ISO 6432 Ø25



Part nº Referencia	STROKE (mm) CARRERA (mm)
MCDM25010	10
MCDM25025	25
MCDM25050	50
MCDM25075	75
MCDM25100	100
MCDM25125	125
MCDM25150	150
MCDM25200	200
MCDM25250	250
MCDM25300	300
MCDM25350	350
MCDM25400	400

*Consultar / *On request / *Sur demande / *Su richiesta

Microcilindros S.E. magnéticos ISO 6432 Ø12

Micro-cylinders S.A. ISO 6432 Ø12

Micro-vérins S.E. magnétiques ISO 6432 Ø12

Microcilindri S.E magnetici ISO 6432 Ø12



Part nº Referencia	STROKE (mm) CARRERA (mm)
MCSM12010	10
MCSM12025	25
MCSM12050	50

Microcilindros S.E. magnéticos ISO 6432 Ø16

Micro-cylinders S.A. ISO 6432 Ø16

Micro-vérins S.E. magnétiques ISO 6432 Ø16

Microcilindri S.E magnetici ISO 6432 Ø16



Part nº Referencia	STROKE (mm) CARRERA (mm)
MCSM16010	10
MCSM16025	25
MCSM16050	50
MCSM16075	75
MCSM16100	100
MCSM16150	150

Microcilindros S.E. magnéticos ISO 6432 Ø20

Micro-cylinders S.A. ISO 6432 Ø20

Micro-vérins S.E. magnétiques ISO 6432 Ø20

Microcilindri S.E magnetici ISO 6432 Ø20



Part nº Referencia	STROKE (mm) CARRERA (mm)
MCSM20010	10
MCSM20025	25
MCSM20050	50
MCSM20075	75
MCSM20100	100
MCSM20150	150



Microcilindros S.E. magnéticos ISO 6432 Ø25

Micro-cylinders S.A. ISO 6432 Ø25

Micro-vérins S.E. magnétiques ISO 6432 Ø25

Microcilindri S.E magnetici ISO 6432 Ø25



Part nº Referencia	STROKE (mm) CARRERA (mm)
MCSM25010	10
MCSM25025	25
MCSM25050	50
MCSM25075	75
MCSM25100	100
MCSM25150	150

Patas para microcilindro

Foot mounting for micro-cylinders

Articulation pour micro-vérins

Piedino per microcilindro



Part nº Referencia	DESCRIPTION DESCRIPCIÓN
PMCN12	12mm
PMCN16	16mm
PMCN20	20mm
PMCN25	25mm

Charnelas para microcilindro

Rear pivot mounting for micro-cylinders

Articulation pour micro-vérins

Cerniera per microcilindro



Part nº Referencia	DESCRIPTION DESCRIPCIÓN
CMCN12	12mm
CMCN16	16mm
CMCN20	20mm
CMCN25	25mm

Horquillas para microcilindro

Rod clevis for micro-cylinders

Chape de tige pour micro-vérins

Forcella femmina per microcilindro



Part nº Referencia	DESCRIPTION DESCRIPCIÓN
HMCN12	12mm
HMCN16	16mm
HMCN20	20mm
HMCN25	25mm

Rótulas para microcilindro

Oscillating clevis for micro-cylinders

Rotules pour micro-vérins

Snodo sferico per microcilindro



Part nº Referencia	DESCRIPTION DESCRIPCIÓN
RMCN12	12mm
RMCN16	16mm
RMCN20	20mm
RMCN25	25mm



Bridas para microcilindro

*Flange mounting for micro-cylinders**Flasque pour micro-vérins**Flangia per microcilindro*

Part nº <i>Referencia</i>	DESCRIPTION <i>DESCRIPCIÓN</i>
BMCN12	12mm
BMCN16	16mm
BMCN20	20mm
BMCN25	25mm

Cilindros pneumáticos

- Cilindros pneumáticos de eixo duplo



Cilindros pneumáticos doble efecto, doble eje Ø10



Double shaft, D.A. pneumatic cylinders Ø10

Vérins pneumatiques D.E. double arbre Ø10

Cilindri pneumatici doppio effetto, a doppio stelo Ø10

Part nº Referencia	STROKE (mm) CARRERA (mm)
CNDEM1010	10
CNDEM1020	20
CNDEM1025	25
CNDEM1030	30
CNDEM1040	40
CNDEM1050	50
CNDEM1060	60
CNDEM1070	70
CNDEM1075	75
CNDEM1080	80
CNDEM1090	90
CNDEM10100	100

Cilindros pneumáticos doble efecto, doble eje Ø16



Double shaft, D.A. pneumatic cylinders Ø16

Vérins pneumatiques D.E. double arbre Ø16

Cilindri pneumatici doppio effetto, a doppio stelo Ø16

Part nº Referencia	STROKE (mm) CARRERA (mm)
CNDEM1610	10
CNDEM1620	20
CNDEM1625	25
CNDEM1630	30
CNDEM1640	40
CNDEM1650	50
CNDEM1660	60
CNDEM1670	70
CNDEM1675	75
CNDEM1680	80
CNDEM1690	90
CNDEM16100	100
CNDEM16125	125
CNDEM16150	150

Cilindros pneumáticos

- Cilindros pneumáticos de eixo duplo



Cilindros neumáticos doble efecto, doble eje Ø20



Double shaft, D.A. pneumatic cylinders Ø20

Vérins pneumatiques D.E. double arbre Ø20

Cilindri pneumatici doppio effetto, a doppio stelo Ø20

Part nº Referencia	STROKE (mm) CARRERA (mm)
CNDEM2010	10
CNDEM2020	20
CNDEM2025	25
CNDEM2030	30
CNDEM2040	40
CNDEM2050	50
CNDEM2060	60
CNDEM2070	70
CNDEM2075	75
CNDEM2080	80
CNDEM2090	90
CNDEM20100	100
CNDEM20125	125
CNDEM20150	150

Cilindros neumáticos doble efecto, doble eje Ø25



Double shaft, D.A. pneumatic cylinders Ø25

Vérins pneumatiques D.E. double arbre Ø25

Cilindri pneumatici doppio effetto, a doppio stelo Ø25

Part nº Referencia	STROKE (mm) CARRERA (mm)
CNDEM2510	10
CNDEM2520	20
CNDEM2525	25
CNDEM2530	30
CNDEM2540	40
CNDEM2550	50
CNDEM2560	60
CNDEM2570	70
CNDEM2575	75
CNDEM2580	80
CNDEM2590	90
CNDEM25100	100
CNDEM25125	125
CNDEM25150	150

Cilindros pneumáticos

- Cilindros pneumáticos de eixo duplo



Cilindros pneumáticos doble efecto, doble eje Ø32



Double shaft, D.A. pneumatic cylinders Ø32

Vérins pneumatiques D.E. double arbre Ø32

Cilindri pneumatici doppio effetto, a doppio stelo Ø32

Part nº Referencia	STROKE (mm) CARRERA (mm)
CNDEM3210	10
CNDEM3220	20
CNDEM3225	25
CNDEM3230	30
CNDEM3240	40
CNDEM3250	50
CNDEM3260	60
CNDEM3270	70
CNDEM3275	75
CNDEM3280	80
CNDEM3290	90
CNDEM32100	100
CNDEM32125	125
CNDEM32150	150