



AVEIDRÁULICA

**CATÁLOGO
INDUSTRIAIS
FLEXÍVEIS**

Manguera industrial INDUSTRΔle

Industrial hoses INDUSTRΔle
Tuyaux industriels INDUSTRΔle
Tubi industriali INDUSTRΔle



■ Mangueras aire-agua / Air-water hoses / Tuyaux air-eau / Tubo acqua-aria

| 03



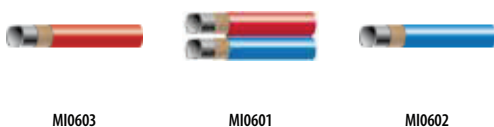
■ Mangueras hidrocarburos / Hydrocarbon hoses / Tuyaux pour hydrocarbures / Tubo idrocarburi

| 04



■ Mangueras soldadura / Welding hoses / Tuyaux pour soudure / Tubi saldatura

| 05



■ Mangueras abrasivas / Abrasive hoses / Tuyaux abrasifs / Tubo abrasivo

| 06



■ Mangueras productos químicos / Chemical product hoses / Tuyaux pour produits chimiques / Tubo prodotti chimici

| 06



■ Mangueras alimentarias / Food hoses / Tuyaux alimentaires / Tubo alimentare

| 07



Manguera industrial INDUSTRΔle

Industrial hoses INDUSTRΔle
Tuyaux industriels INDUSTRΔle
Tubi industriali INDUSTRΔle



Ariaform aire comprimido y agua-impulsión

Compressed Air hose - impulsion

Ariaform refoulement air comprimé et de l'eau



Tubo aria compressa e mandata

Ø INNER Ø INT.	Ø outer Ø ext	Part n° Referencia
6	14	M80000614
8	15	M80000817
10	17	M80001017
13	21	M80001321
16	26	M80001626
19	29	M80001929

Polivalente serie continua

Multi-function. Continuous serie

Tuyau polyvalent huiles/eau



Polivalente. Serie continua

Ø INNER Ø INT.	Ø outer Ø ext	Part n° Referencia
8	15	MM2008
10	17	MM2010
13	21	MM2013
16	24	MM2016
19	27	MM2019
25	34	MM2025
32	44	MM2032
38	50	MM2038

Aspiración agua 10 bar

Water suction hose 10 bar

Tuyau aspiration eau 10 bar



Tubo aspirazione acqua 10 bar

Ø INNER Ø INT.	Ø outer Ø ext	Part n° Referencia
25	35	MI01011025
30	40	MI01011030
32	42	MI01011032
35	45	MI01011035
38	48	MI01011038
40	50	MI01011040
51	62	MI01011051
60	71	MI01011060
63,5	76	MI01011063.5
70	82	MI01011070
76	88	MI01011076
80	92	MI01011080
90	102	MI01011090
102	117	MI01011102

Fumigación serie continua

Fumigation hose. Continuous serie

Tuyau fumigation



Fumigazione. Serie continua

Ø INNER Ø INT.	Ø outer Ø ext	Part n° Referencia
12,5	21	MF8012

Aire comprimido y agua - impulsión

Compressed air and water impulsion

Air comprimé et eau-impulsion



Aria compressa e acqua - mandata

Ø INNER Ø INT.	Ø outer Ø ext	Part n° Referencia
25	35	MA122025
32	45	MA122032
38	51	MA122040
51	64	MA122051
63.5	79.5	MA122063
75	91	MA122075

Vapor 18 bar, limpieza industrial 210°C

Steam hose 18 bar, industrial cleaning, 210°C

Tuyau vapeur 18 bar, nettoyage industriel 210°C



Vapore 18 bar, lavaggio industriale 210°C

Ø INNER Ø INT.	Ø outer Ø ext	Part n° Referencia
13,5	24,5	MI01021713
18	31	MI01021719
25	38	MI01021725
32	45	MI01021732
38	53	MI01021738
50,8	67	MI01021751
76,2	93	MI01021776

Vapor 7 bar EPDM blanco FDA - limpieza industrial

Steam hose 7 bar, white EPDM FDA industrial cleaning

Tuyau vapeur 7 bar EPDM blanc FDA nettoyage industriel



Tubo vapore 7 bar EPDM bianco FDA pulizia industriale

Ø INNER Ø INT.	Ø outer Ø ext	Part n° Referencia
13	23	MI01030713
16	26	MI01030716
19	31	MI01030719
25	37	MI01030725

Manguera industrial INDUSTRΔle

Industrial hoses INDUSTRΔle
Tuyaux industriels INDUSTRΔle
Tubi industriali INDUSTRΔle



Manguera hidrocarburos 10 bar impulsión

Hydrocarbons hose 10 bar discharge

Tuyau pour hydrocarbures 10 bar impulsion



Tubo idrocarburi 10 bar -mandata

Ø INNER Ø INT.	Ø outer Ø ext	Part nº Referencia
6	12	MI04011006
8	14	MI04011008
10	17	MI04011010
13	20	MI04011013
16	23	MI04011016
19	27	MI04011019
25	35	MI04011025
32	42	MI04011032

Manguera hidrocarburos 20 bar impulsión

Hydrocarbons hose 20 bar discharge

Tuyau pour hydrocarbures 20 bar impulsion



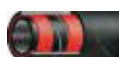
Tubo idrocarburi 20 bar -mandata

Ø INNER Ø INT.	Ø outer Ø ext	Part nº Referencia
6	12	MI04042006
8	15	MI04042008
10	17	MI04042010
13	20	MI04042013
16	24	MI04042016
19	28	MI04042019
25	35	MI04042025
32	42	MI04042032

Manguera hidrocarburos 10 bar aspiración

Hydrocarbons hose 10 bar intake

Tuyau pour hydrocarbures 10 bar aspiration



Tubo aspirazione 10 bar idrocarburi

Ø INNER Ø INT.	Ø outer Ø ext	Part nº Referencia
19	29	MI040310019
25	35	MI040310025
32	42	MI040310032
38	48	MI040310038
51	61,8	MI040310051
63	75	MI040310063
76	89	MI040310076
101,4	115,4	MI040310102

Manguera Carburcord 16 bar

Carburcord hose 16 bar

Tuyau Carburcord 16 bar



Tubo Carburcord 16 bar

Ø OUTER Ø EXT.	Ø INNER Ø INT.	Part nº Referencia
42	30	M70003041
44	32	M70003243
55	40	M70004054
65	50	M70005064

Manguera SAE 100 R4

SAE 100 R4 hose

Tuyau SAE 100 R4



Tubo R4 SAE 100

DN	Part nº Referencia
3/4"	ML701019
1"	ML701025
1 1/4"	ML701032
1 1/2"	ML701038
2"	ML701050
2 1/2"	ML701063

Manguera EN 854 R6 / SAE 100 R6

EN 854 R6 / SAE 100 R6 Hose

Tuyau EN 854 R6 / SAE 100 R6



Tubo EN 854 R6 / SAE 100 R6

DN	Part nº Referencia
1/4"	MSB2104
5/16"	MSB2105
3/8"	MSB2106
1/2"	MSB2108
5/8"	MSB2110
3/4"	MSB2112
1"	MSB2116

Manguera industrial INDUSTrΔle

Industrial hoses INDUSTrΔle
Tuyaux industriels INDUSTrΔle
Tubi industriali INDUSTrΔle



Soldadura acetileno

Welding hose acetylene

Tuyau pour soudure - acétylène



Tubo saldatura-acetilene

Ø INNER Ø INT.	Ø outer Ø ext	Part n° Referencia
6,3	13,3	MI06030603
8	15	MI06030803
10	17	MI06031003

Soldadura oxígeno

Welding hose - oxygene

Tuyau pour soudure - oxygène



Tubo saldatura-ossigeno

Ø INNER Ø INT.	Ø outer Ø ext	Part n° Referencia
6,3	13,3	MI06020603
8	15	MI06020803
10	17	MI06021003

Bitubo (soldadura) oxígeno-acetileno

2 tubes welding hose - oxygene-acetylene

Tuyau pour soudure jumelé - oxygène-acétylène



Bitubo saldatura -ossigeno-acetilene

Ø INNER Ø INT.	Ø outer Ø ext	Part n° Referencia
6,3-6,3	12,3-12,3	MI0601060612
8-8	14-14	MI0601080814
10-10	16-16	MI0601101016

Manguera industrial INDUSTRΔle

Industrial hoses INDUSTRΔle
Tuyaux industriels INDUSTRΔle
Tubi industriali INDUSTRΔle



Chorro de arena - impulsión 12 bar

Sandblast hose - delivery 12 bar

Tuyau sablage - refoulement 12 bar



Tubo scarico - sabbia 12 bar

Ø INNER Ø INT.	Ø outer Ø ext	Part nº Referencia
13	27	MI030112013
19	33	MI030112019
25	39	MI030112025
32	48	MI030112032
38	54	MI030112038
42	56	MI030112042

Abrasiva 10 bar aspiración

Abrasive hose - suction 10 bar

Tuyau abrasif - aspiration 10 bar



Tubo abrasivo - aspirazione 10 bar

Ø INNER Ø INT.	Ø outer Ø ext	Part nº Referencia
51	65	MI030210051
60	75	MI030210060
63.5	79	MI030210063
76	92	MI030210076
80	96	MI030210080
102	118	MI030210102

Productos químicos 16 bar EPDM

Chemical products hose 16 bar EPDM

Tuyau produits chimiques 16 bar EPDM



Tubo prodotti chimici 16 bar EPDM

Ø INNER Ø INT.	Ø outer Ø ext	Part nº Referencia
19	31	MI070116019
25	37	MI070116025
32	44	MI070116032
38	51	MI070116038
51	67	MI070116051
63	79	MI070116063

Abrasiva 4 bar impulsión

Abrasive hose - delivery 4 bar

Tuyau abrasif - refoulement 4 bar



Tubo abrasivo - scarico 4 bar

Ø INNER Ø INT.	Ø outer Ø ext	Part nº Referencia
90	100	MI030305090
102	112	MI030305102
110	120	MI030305110
127	137	MI030305127
152	162	MI030305152
203	213	MI030305203

Abrasiva impulsión 40 bar

Abrasive hose 40 bar

Tuyau abrasif 40 bar



Tubo abrasivo 40 bar

Ø INNER Ø INT.	Ø outer Ø ext	Part nº Referencia
25	37	MI030540025
32	46	MI030540032
35	49	MI030540035
38	54	MI030540038
50	66	MI030540050
65	83	MI030540065
76	98	MI030540076
102	125	MI030540102

Productos químicos 16 bar Polietileno/UPE

Chemical products hose 16 bar Polyethylene /UPE

Tuyau produits chimiques 16 bar Polyéthylène / UPE



Prodotti chimici 16 bar Polietilene/UPE

Ø INNER Ø INT.	Ø outer Ø ext	Part nº Referencia
19	31	MI070216019
25	37	MI070216025
32	44	MI070216032
38	51	MI070216038
50	66	MI070216050
63	79	MI070216063
75	91	MI070216075
100	116	MI070216100

Manguera industrial INDUSTRΔle

Industrial hoses INDUSTRΔle
Tuyaux industriels INDUSTRΔle
Tubi industriali INDUSTRΔle



Manguera alimentaria polivalente FDA 10 bar

Multi-function food hose FDA 10 bar

Tuyau alimentaire polyvalent FDA 10 bar

Tubo alimentare polivalente FDA 10 bar



Ø INNER Ø INT.	Ø outer Ø ext	Part nº Referencia
25,4	38	MAS025
32	45	MAS032
38	52	MAS038
50,8	66	MAS051
63,5	78	MAS063
76,2	93	MAS076

Leche anti-extrusión espiral poliamida 10 bar

Milk hose anti-extrusion polyamide spiral 10 bar

Tuyau à lait anti-extrusion spirale polyamide 10 bar

Tubo latte anti-estrusione spirale poliamide 10 bar



Ø INNER Ø INT.	Ø outer Ø ext	Part nº Referencia
25	38	MI020510025
32	45	MI020510032
38	52	MI020510038
51	66	MI020510051
63	78	MI020510063
76	93	MI020510076

Bebidas alcohólicas máx. 40% FDA 10 bar

Alcoholic beverages max. 40% FDA 10 bar

Boissons alcoolisées max. 40% bar FDA 10

Bibite alcoliche max. 40% FDA 10 bar



Ø INNER Ø INT.	Ø outer Ø ext	Part nº Referencia
25	37	MI020610025
38	50	MI020610038
51	63	MI020610051
76	88	MI020610076

CAMLOCK DIN 2828

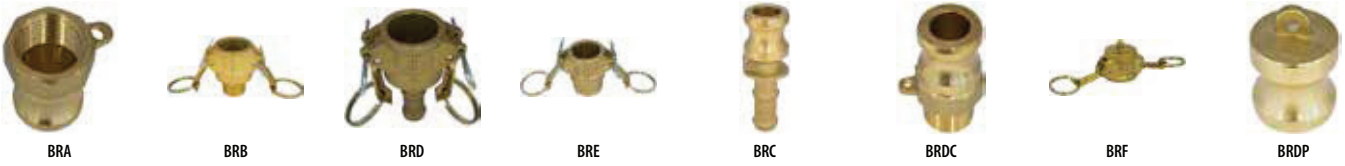
CAMLOCK DIN 2828 Fittings
Raccords CAMLOCK
Raccordi CAMLOCK



■ CAMLOCK aluminio / CAMLOCK Unions aluminum / Raccords CAMLOCK aluminium / Raccordi CAMLOCK alluminio | 16



■ CAMLOCK latón / CAMLOCK Unions brass / Raccords CAMLOCK laiton / Raccordi CAMLOCK ottone | 18



■ CAMLOCK PP / CAMLOCK Unions PP / Raccords CAMLOCK PP / Raccordi CAMLOCK polipropilene | 20



■ Juntas CAMLOCK / CAMLOCK Seals / Joints CAMLOCK / Guarnizioni per Camlock | 21



Acoples GUILLEMIN NF E-29572

GUILLEMIN NF E-29572 Fittings
 Raccords GUILLEMIN NF E-29572
 Raccordi GUILLEMIN NF E-29572



■ GUILLEMIN aluminio / GUILLEMIN aluminum / GUILLEMIN aluminium / GUILLEMIN alluminio

| 22



ALGU01C



ALGU02C



ALGU01S



ALGU02S



ALGU04C



ALGU03C



ALGU04S



ALGU05C

■ Juntas para GUILLEMIN / Seals for GUILLEMIN / Joints pour GUILLEMIN / Guarnizioni per GUILLEMIN

| 23



NBRGU

Acoples TW DIN 28450

TW DIN 28450 Fittings
 Raccords TW DIN 28450
 Raccordi TW DIN 28450

■ TW Latón / TW brass / TW laiton / TW Ottone

| 24



BRMK



BRVK

■ TW aluminio / TW aluminum / TW aluminium / TW alluminio

| 24



ALMB/BRMB



ALVB/BRVB

Acople BARCELONA UNE 23400

BARCELONA UNE 23400 Fittings
Raccords BARCELONA UNE 23400
Raccordi BARCELONA UNE 23400



- BARCELONA Aluminio / BARCELONA aluminium / BARCELONA aluminium / BARCELONA Alluminio | 25



ALBA01



ALBA03



ALBA05



ALBA02



ALBA04

- Juntas BARCELONA / BARCELONA seals / Joints BARCELONA / Guarnizioni BARCELONA | 25



NBRBA

Acoples STORZ DIN 1430

STORZ DIN 1430 Fittings
Raccords STORZ DIN 1430
Raccordi STORZ DIN 1430

- STORZ aluminio DIN 1430 / STORZ aluminium DIN 1430 / STORZ aluminium DIN 1430 / STORZ alluminio DIN 1430 | 26



ALST01



ALST03



ALST05



ALST02



ALST04

- Juntas STORZ / STORZ Seals / STORZ Joints / Guarnizioni STORZ | 26



NBRST

Acoples EA DIN 3489

EA DIN 3489 Fittings
Raccords EA DIN 3489
Raccordi EA DIN 3489



- EA acero /EA steel /EA acier /EA acciaio

| 27



EA01



EA02



EA04



EA05

- Juntas EA /EA seals / Joints EA /Guarnizioni EA

| 27



NBREA

Acoples UA CHICAGO

UA CHICAGO Fittings
Raccords UA CHICAGO
Raccordi UA CHICAGO

- UA CHICAGO ACERO /UA CHICAGO steel /UA CHICAGO acier /UA CHICAGO acciaio

| 28



UA01



UA02



UA04



UA05

- JUNTAS UA CHICAGO /UA CHICAGO seals /Joints UA CHICAGO /Guarnizioni UA CHICAGO

| 28



NBRUA

Acoples EXPRESS NF E-29-573

EXPRESS NF E-29-573 Fittings
 Raccords EXPRESS NF E-29-573
 Raccordi EXPRESS NF E-29-573



- EXPRESS latón / EXPRESS brass / EXPRESS laiton / EXPRESS ottone | 29



BREX01



BREX02



BREX04



BREX05

- Juntas EXPRESS / EXPRESS seals / Joints EXPRESS / Guarnizioni EXPRESS | 29



NBREX

Acoples GEKA

GEKA Fittings
 Raccords GEKA
 Raccordi GEKA

- GEKA latón / GEKA brass / GEKA laiton / GEKA ottone | 30



BRGE01



BRGE02



BRGE04



BRGE05

- Juntas GEKA / GEKA seals / Joints GEKA / Guarnizioni GEKA | 30



NBRGE

Acoples CAMLOCK MORTERO

MORTAR CAMLOCK Fittings
 Raccords MORTIER CAMLOCK
 Raccordi CAMLOCK MORTAIO

- CAMLOCK MORTERO acero carbono / Carbon steel MORTAR CAMLOCK / CAMLOCK MORTIER acier carbone / CAMLOCK MORTAIO acciaio al carbonio | 31



MT22A



MT22C



MT22D



MT22E

Acoples CHORRO DE ARENA

SANDBLAST Fittings
Raccords SABLAGE
Raccordi per SABBIATURA



- CHORRO DE ARENA aluminio / SANDBLAST aluminum / SABLAGE aluminium / SABBIATURA alluminio | 32



ALCH05



ALCH01



ALCH07

- CHORRO DE ARENA latón / SANDBLAST brass / SABLAGE laiton / SABBIATURA ottone | 32



BRCH05



BRCH01



BRCH07

- CHORRO DE ARENA nylon / SANDBLAST nylon / SABLAGE nylon / SABBIATURA Nylon | 33



NYCH05



NYCH01



NYCH07

- Juntas CHORRO DE ARENA / SANDBLAST Seals / SABLAGE Joints / SABBIATURA Guarnizioni | 33



NBRCH

Acoples BAUER

BAUER Fittings
Raccords BAUER
Raccordi BAUER

- BAUER acero / BAUER carbon steel / BAUER acier / BAUER acciaio | 34



BE



BEM



BEF

- JUNTA BAUER / BAUER seals / Joints BAUER / Guarnizioni BAUER | 34



NBRBE

Acoples PERROT

PERROT Fittings
Raccords PERROT
Raccordi PERROT



- PERROT acero / PERROT carbon steel / PERROT acier / PERROT acciaio

| 35



PE

PEM

PEF

- Juntas PERROT / PERROT seals / Joints PERROT / Guarnizioni PERROT

| 35



NBRPE

Acoples vapor tipo BOSS

Steam fittings BOSS type
Raccords vapeur type BOSS
Raccordi per vapore tipo BOSS

- BOSS acero / BOSS carbon steel / BOSS acier / BOSS acciaio

| 36



B01_3

Acoples vapor EN 14423

Steam EN 14423 fittings
Raccords vapeur EN 14423
Raccordi per vapore EN 14423

- EN 14423 acero carbono / EN 14423 steel fittings / Raccords EN 14423 acier / Raccordi EN 14423 acciaio

| 37



AB06



STE01



STE02

Accesorios industriales

Industrial accessories
Accessoires industriels
Accessori industriale



- Campana para racor industrial / Crimping Ferrule for industrial fitting / Jupe pour raccord industriel / Boccia per raccordo industriale | 38



ALCA

- Abrazadera para racor industrial / Clamp for industrial fitting / Collier pour raccord industriel / Collare per raccordo industriale | 38



ALAB01



AB03



AB05



AB04



AB02

CAMLOCK DIN 2828

CAMLOCK DIN 2828 Fittings
Raccords CAMLOCK
Raccordi CAMLOCK



CAMLOCK alluminio macho - rosca hembra BSP Tipo A

CAMLOCK aluminum male - female threaded BSP
A Type

CAMLOCK aluminium -adaptateur mâle - filetage
femelle Type A

CAMLOCK alluminio -adattatore maschio-
filettatura femmina Tipo A



DN	THREAD ROSCA	Part nº Referencia
12	1/2"	ALA012
20	3/4"	ALA020
25	1"	ALA025
32	1" 1/4	ALA032
40	1" 1/2	ALA040
50	2"	ALA050
65	2" 1/2	ALA065
80	3"	ALA080
100	4"	ALA100

CAMLOCK alluminio hembra - rosca macho BSPT Tipo B

CAMLOCK aluminum female - male threaded BSPT
B Type

CAMLOCK aluminium -adaptateur femelle -
filetage mâle Type B

CAMLOCK alluminio -adattatore femmina-
filettatura maschio Tipo B



DN	THREAD ROSCA	Part nº Referencia
12	1/2"	ALB012
20	3/4"	ALB020
25	1"	ALB025
32	1" 1/4	ALB032
40	1" 1/2	ALB040
50	2"	ALB050
65	2" 1/2	ALB065
80	3"	ALB080
100	4"	ALB100

CAMLOCK alluminio hembra - para manguera Tipo C

CAMLOCK aluminum female - serrated hose
shank C Type

CAMLOCK aluminium -coupleur femelle Type C

CAMLOCK alluminio -adattatore con inserto per
tubo Tipo C



DN	Part nº Referencia
1/2"	ALC012
3/4"	ALC020
1"	ALC025
1"1/4	ALC032
1"1/2	ALC040
2"	ALC050
2"1/2	ALC065
3"	ALC080
4"	ALC100

CAMLOCK alluminio hembra - rosca hembra BSP Tipo D

CAMLOCK aluminum female - female threaded
BSP D Type

CAMLOCK aluminium -adaptateur femelle Type D

CAMLOCK alluminio -adattatore femmina Tipo D



DN	THREAD ROSCA	Part nº Referencia
12	1/2"	ALD012
20	3/4"	ALD020
25	1"	ALD025
32	1" 1/4	ALD032
40	1" 1/2	ALD040
50	2"	ALD050
65	2" 1/2	ALD065
80	3"	ALD080
100	4"	ALD100

CAMLOCK alluminio macho - para manguera Tipo E

CAMLOCK aluminum male - serrated hose shank
E Type

CAMLOCK aluminium -coupleur mâle Type E

CAMLOCK alluminio -adattatore con inserto per
Tipo E



DN	Part nº Referencia
1/2"	ALE012
3/4"	ALE020
1"	ALE025
1"1/4	ALE032
1"1/2	ALE040
2"	ALE050
2"1/2	ALE065
3"	ALE080
4"	ALE100

CAMLOCK alluminio macho - rosca macho BSPT Tipo F

CAMLOCK aluminum male - male threaded BSPT
F Type

CAMLOCK aluminium -adaptateur mâle Type F

CAMLOCK alluminio -adattatore maschio Tipo F



DN	THREAD ROSCA	Part nº Referencia
12	1/2"	ALF012
20	3/4"	ALF020
25	1"	ALF025
32	1" 1/4	ALF032
40	1" 1/2	ALF040
50	2"	ALF050
65	2" 1/2	ALF065
80	3"	ALF080
100	4"	ALF100

CAMLOCK DIN 2828

CAMLOCK DIN 2828 Fittings
Raccords CAMLOCK
Raccordi CAMLOCK



CAMLOCK alluminio hembra - tapón Tipo DC

CAMLOCK aluminum cap DC Type

CAMLOCK aluminium -bouchon femelle Type DC

CAMLOCK alluminio -tappo di protezione Tipo DC



DN	Part nº Referencia
12	ALDC012
20	ALDC020
25	ALDC025
32	ALDC032
40	ALDC040
50	ALDC050
65	ALDC065
80	ALDC080
100	ALDC100

CAMLOCK alluminio macho - tapón tipo DP

CAMLOCK aluminum male - plug DC Type

CAMLOCK aluminium -bouchon mâle Type DP

*CAMLOCK alluminio -cappuccio di protezione
Tipo DP*



DN	Part nº Referencia
12	ALDP012
20	ALDP020
25	ALDP025
32	ALDP032
40	ALDP040
50	ALDP050
65	ALDP065
80	ALDP080
100	ALDP100

CAMLOCK DIN 2828

CAMLOCK DIN 2828 Fittings
Raccords CAMLOCK
Raccordi CAMLOCK



CAMLOCK latón macho - rosca hembra Tipo A

CAMLOCK brass - adaptor, female threaded A Type

CAMLOCK laiton - adaptateur mâle - filetage femelle Type A

CAMLOCK ottone - adattatore maschio-filettatura femmina Tipo A



DN	THREAD ROSCA	Part nº Referencia
12	1/2"	BRA012
20	3/4"	BRA020
25	1"	BRA025
32	1" 1/4	BRA032
40	1" 1/2	BRA040
50	2"	BRA050
65	2" 1/2	BRA065
80	3"	BRA080
100	4"	BRA100

CAMLOCK latón hembra - rosca macho Tipo B

CAMLOCK brass - coupling, female threaded B Type

CAMLOCK laiton - adaptateur femelle - filetage mâle Type B

CAMLOCK ottone - adattatore femmina-filettatura maschio Tipo B



DN	THREAD ROSCA	Part nº Referencia
12	1/2"	BRB012
20	3/4"	BRB020
25	1"	BRB025
32	1" 1/4	BRB032
40	1" 1/2	BRB040
50	2"	BRB050
65	2" 1/2	BRB065
80	3"	BRB080
100	4"	BRB100

CAMLOCK latón hembra para manguera Tipo C

CAMLOCK brass - coupling with serrated hose shank C Type

CAMLOCK laiton - coupleur femelle Type C

CAMLOCK ottone - adattatore con inserto per tubo Tipo C



DN	Part nº Referencia
1/2"	BRC012
3/4"	BRC020
1"	BRC025
1" 1/4	BRC032
1" 1/2	BRC040
2"	BRC050
2" 1/2	BRC065
3"	BRC080
4"	BRC100

CAMLOCK latón hembra BSP Tipo D

CAMLOCK brass - coupling, female threaded D Type

CAMLOCK laiton - adaptateur femelle Type D

CAMLOCK ottone - adattatore femmina Tipo D



DN	THREAD ROSCA	Part nº Referencia
12	1/2"	BRD012
20	3/4"	BRD020
25	1"	BRD025
32	1" 1/4	BRD032
40	1" 1/2	BRD040
50	2"	BRD050
65	2" 1/2	BRD065
80	3"	BRD080
100	4"	BRD100

CAMLOCK latón macho para manguera Tipo E

CAMLOCK brass - adaptor, with serrated hose shank E Type

CAMLOCK laiton - coupleur mâle Type E

CAMLOCK ottone - adattatore con inserto per Tipo E



DN	Part nº Referencia
1/2"	BRE012
3/4"	BRE020
1"	BRE025
1" 1/4	BRE032
1" 1/2	BRE040
2"	BRE050
2" 1/2	BRE065
3"	BRE080
4"	BRE100

CAMLOCK latón macho BSPT Tipo F

CAMLOCK brass - adaptor, male threaded F Type

CAMLOCK laiton - adaptateur mâle Type F

CAMLOCK ottone - adattatore maschio Tipo F



DN	THREAD ROSCA	Part nº Referencia
12	1/2"	BRF012
20	3/4"	BRF020
25	1"	BRF025
32	1" 1/4	BRF032
40	1" 1/2	BRF040
50	2"	BRF050
65	2" 1/2	BRF065
80	3"	BRF080
100	4"	BRF100

CAMLOCK DIN 2828

CAMLOCK DIN 2828 Fittings
Raccords CAMLOCK
Raccordi CAMLOCK



CAMLOCK latón hembra -tapón Tipo DC

CAMLOCK brass - cap DC Type

CAMLOCK laiton - bouchon femelle Type DC

CAMLOCK ottone - tappo di protezione Tipo DC



DN		Part nº Referencia
1/2"	12	BRDC012
3/4"	20	BRDC020
1"	25	BRDC025
1"1/4	32	BRDC032
1"1/2	40	BRDC040
2"	50	BRDC050
2"1/2	65	BRDC065
3"	80	BRDC080
4"	100	BRDC100

CAMLOCK latón macho -tapón Tipo DP

CAMLOCK brass - plug DP Type

CAMLOCK laiton - bouchon mâle Type DP

CAMLOCK ottone - cappuccio di protezione Tipo DP



DN		Part nº Referencia
1/2"	12	BRDP012
3/4"	20	BRDP020
1"	25	BRDP025
1"1/4	32	BRDP032
1"1/2	40	BRDP040
2"	50	BRDP050
2"1/2	65	BRDP065
3"	80	BRDP080
4"	100	BRDP100

CAMLOCK DIN 2828

CAMLOCK DIN 2828 Fittings
Raccords CAMLOCK
Raccordi CAMLOCK



CAMLOCK PP Adaptador macho - rosca hembra Tipo A BSP

CAMLOCK PP-Adaptor, female threaded A Type
BSP

CAMLOCK PP-Adaptateur mâle - filetage femelle
Type A BSP

CAMLOCK PP-Adattatore maschio-filettatura
femmina Tipo A BSP



DN	THREAD ROSCA	Part nº Referencia
12	1/2"	PPA012
20	3/4"	PPA020
25	1"	PPA025
32	1"1/4	PPA032
40	1"1/2	PPA040
50	2"	PPA050
65	2"1/2	PPA065
80	3"	PPA080
100	4"	PPA100

CAMLOCK PP Adaptador hembra - rosca macho Tipo B BSPT

CAMLOCK PP-Coupling, female threaded B Type
BSPT

CAMLOCK PP-Adaptateur femelle - filetage mâle
Type B BSPT

CAMLOCK PP-Adattatore femmina-filettatura
maschio Tipo B BSPT



DN	THREAD ROSCA	Part nº Referencia
12	1/2"	PPB012
20	3/4"	PPB020
25	1"	PPB025
32	1"1/4	PPB032
40	1"1/2	PPB040
50	2"	PPB050
65	2"1/2	PPB065
80	3"	PPB080
100	4"	PPB100

CAMLOCK PP Conexión hembra para manguera Tipo C

CAMLOCK PP-Coupling with serrated hose shank
C Type

CAMLOCK PP-Coupleur femelle Type C

CAMLOCK PP-Adattatore con inserto per tubo
Tipo C



DN	THREAD ROSCA	Part nº Referencia
12	1/2"	PPC012
20	3/4"	PPC020
25	1"	PPC025
32	1"1/4	PPC032
40	1"1/2	PPC040
50	2"	PPC050
65	2"1/2	PPC065
80	3"	PPC080
100	4"	PPC100

CAMLOCK PP Adaptador hembra Tipo D BSP

CAMLOCK PP-Coupling, female threaded D Type
BSP

CAMLOCK PP-Adaptateur femelle Type D BSP

CAMLOCK PP-Adattatore femmina Tipo D BSP



DN	THREAD ROSCA	Part nº Referencia
12	1/2"	PPD012
20	3/4"	PPD020
25	1"	PPD025
32	1"1/4	PPD032
40	1"1/2	PPD040
50	2"	PPD050
65	2"1/2	PPD065
80	3"	PPD080
100	4"	PPD100

CAMLOCK PP Conexión macho para manguera Tipo E

CAMLOCK PP-Adaptor, with serrated hose shank
E Type

CAMLOCK PP-Coupleur mâle Type E

CAMLOCK PP-Adattatore con inserto per Tipo E



DN	THREAD ROSCA	Part nº Referencia
12	1/2"	PPE012
20	3/4"	PPE020
25	1"	PPE025
32	1"1/4	PPE032
40	1"1/2	PPE040
50	2"	PPE050
65	2"1/2	PPE065
80	3"	PPE080
100	4"	PPE100

CAMLOCK PP Adaptador macho Tipo F BSPT

CAMLOCK PP-Adaptor, male threaded F Type BSPT

CAMLOCK PP-Adaptateur mâle Type F BSPT

CAMLOCK PP-Adattatore maschio Tipo F BSPT



DN	THREAD ROSCA	Part nº Referencia
12	1/2"	PPF012
20	3/4"	PPF020
25	1"	PPF025
32	1"1/4	PPF032
40	1"1/2	PPF040
50	2"	PPF050
65	2"1/2	PPF065
80	3"	PPF080
100	4"	PPF100

CAMLOCK DIN 2828

CAMLOCK DIN 2828 Fittings
Raccords CAMLOCK
Raccordi CAMLOCK



CAMLOCK PP Adaptador macho - rosca hembra Tipo A BSP

CAMLOCK PP-Adaptor, female threaded A Type BSP

CAMLOCK PP-Adaptateur mâle - filetage femelle Type A BSP

CAMLOCK PP-Adattatore maschio-filettatura femmina Tipo A BSP



DN	THREAD ROSCA	Part nº Referencia
12	1/2"	PPA012
20	3/4"	PPA020
25	1"	PPA025
32	1"1/4	PPA032
40	1"1/2	PPA040
50	2"	PPA050
65	2"1/2	PPA065
80	3"	PPA080
100	4"	PPA100

CAMLOCK PP Adaptador hembra - rosca macho Tipo B BSPT

CAMLOCK PP-Coupling, female threaded B Type BSPT

CAMLOCK PP-Adaptateur femelle - filetage mâle Type B BSPT

CAMLOCK PP-Adattatore femmina-filettatura maschio Tipo B BSPT



DN	THREAD ROSCA	Part nº Referencia
12	1/2"	PPB012
20	3/4"	PPB020
25	1"	PPB025
32	1"1/4	PPB032
40	1"1/2	PPB040
50	2"	PPB050
65	2"1/2	PPB065
80	3"	PPB080
100	4"	PPB100

CAMLOCK PP Conexión hembra para manguera Tipo C

CAMLOCK PP-Coupling with serrated hose shank C Type

CAMLOCK PP-Coupleur femelle Type C

CAMLOCK PP-Adattatore con inserto per tubo Tipo C



DN	THREAD ROSCA	Part nº Referencia
12	1/2"	PPC012
20	3/4"	PPC020
25	1"	PPC025
32	1"1/4	PPC032
40	1"1/2	PPC040
50	2"	PPC050
65	2"1/2	PPC065
80	3"	PPC080
100	4"	PPC100

CAMLOCK PP Adaptador hembra Tipo D BSP

CAMLOCK PP-Coupling, female threaded D Type BSP

CAMLOCK PP-Adaptateur femelle Type D BSP

CAMLOCK PP-Adattatore femmina Tipo D BSP



DN	THREAD ROSCA	Part nº Referencia
12	1/2"	PPD012
20	3/4"	PPD020
25	1"	PPD025
32	1"1/4	PPD032
40	1"1/2	PPD040
50	2"	PPD050
65	2"1/2	PPD065
80	3"	PPD080
100	4"	PPD100

CAMLOCK PP Conexión macho para manguera Tipo E

CAMLOCK PP-Adaptor, with serrated hose shank E Type

CAMLOCK PP-Coupleur mâle Type E

CAMLOCK PP-Adattatore con inserto per Tipo E



DN	THREAD ROSCA	Part nº Referencia
12	1/2"	PPE012
20	3/4"	PPE020
25	1"	PPE025
32	1"1/4	PPE032
40	1"1/2	PPE040
50	2"	PPE050
65	2"1/2	PPE065
80	3"	PPE080
100	4"	PPE100

CAMLOCK PP Adaptador macho Tipo F BSPT

CAMLOCK PP-Adaptor, male threaded F Type BSPT

CAMLOCK PP-Adaptateur mâle Type F BSPT

CAMLOCK PP-Adattatore maschio Tipo F BSPT



DN	THREAD ROSCA	Part nº Referencia
12	1/2"	PPF012
20	3/4"	PPF020
25	1"	PPF025
32	1"1/4	PPF032
40	1"1/2	PPF040
50	2"	PPF050
65	2"1/2	PPF065
80	3"	PPF080
100	4"	PPF100

Acoples GUILLEMIN NF E-29572

GUILLEMIN NF E-29572 Fittings
Raccords GUILLEMIN NF E-29572
Raccordi GUILLEMIN NF E-29572



GUILLEMIN aluminio con cierre -rosca hembra BSP

GUILLEMIN aluminium with closure-BSP Female thread

GUILLEMIN aluminium avec fermeture-Filetage Femelle BSP

GUILLEMIN alluminio con chiusura-Filetto femmina



DN	THREAD ROSCA	Part nº Referencia
20	3/4"	ALGU01C020
25	1"	ALGU01C025
32	1" 1/4	ALGU01C032
40	1" 1/2	ALGU01C040
50	2"	ALGU01C050
65	2" 1/2	ALGU01C065
80	3"	ALGU01C080
100	4"	ALGU01C100

GUILLEMIN aluminio con cierre -rosca macho BSP

GUILLEMIN aluminium with closure-BSP Male thread

GUILLEMIN aluminium avec fermeture-Filetage Male BSP

GUILLEMIN alluminio con chiusura-Filetto maschio



DN	THREAD ROSCA	Part nº Referencia
20	3/4"	ALGU02C020
25	1"	ALGU02C025
32	1" 1/4	ALGU02C032
40	1" 1/2	ALGU02C040
50	2"	ALGU02C050
65	2" 1/2	ALGU02C065
80	3"	ALGU02C080
100	4"	ALGU02C100

GUILLEMIN aluminio sin cierre -rosca hembra BSP

GUILLEMIN aluminium without closure-BSP Female thread

GUILLEMIN aluminium sans fermeture-Filetage Femelle BSP

GUILLEMIN alluminio senza chiusura-Filetto femmina



DN	THREAD ROSCA	Part nº Referencia
20	3/4"	ALGU01S020
25	1"	ALGU01S025
32	1" 1/4	ALGU01S032
40	1" 1/2	ALGU01S040
50	2"	ALGU01S050
65	2" 1/2	ALGU01S065
80	3"	ALGU01S080
100	4"	ALGU01S100

GUILLEMIN aluminio sin cierre -rosca macho BSP

GUILLEMIN aluminium without closure-BSP Male thread

GUILLEMIN aluminium sans fermeture-Filetage Male BSP

GUILLEMIN alluminio senza chiusura-Filetto maschio



DN	THREAD ROSCA	Part nº Referencia
20	3/4"	ALGU02S020
25	1"	ALGU02S025
32	1" 1/4	ALGU02S032
40	1" 1/2	ALGU02S040
50	2"	ALGU02S050
65	2" 1/2	ALGU02S065
80	3"	ALGU02S080
100	4"	ALGU02S100

GUILLEMIN aluminio con cierre -tapón

GUILLEMIN aluminium with closure-Plug

GUILLEMIN aluminium avec fermeture-Bouchon

GUILLEMIN alluminio con chiusura-Tappo



DN	Part nº Referencia
20	ALGU04C020
25	ALGU04C025
32	ALGU04C032
40	ALGU04C040
50	ALGU04C050
65	ALGU04C065
80	ALGU04C080
100	ALGU04C100

GUILLEMIN aluminio con cierre-reductor

GUILLEMIN aluminium with closure-Reducer

GUILLEMIN aluminium avec fermeture-Réduction

GUILLEMIN alluminio con chiusura-Riduzione



DN	Part nº Referencia
40-32	ALGU03C040032
50-40	ALGU03C050040
65-50	ALGU03C065050
80-65	ALGU03C080065
100-80	ALGU03C100080

GUILLEMIN aluminio sin cierre -tapón

GUILLEMIN aluminium without closure-Plug

GUILLEMIN aluminium sans fermeture-Bouchon

GUILLEMIN alluminio senza chiusura-Tappo



DN	Part nº Referencia
32	ALGU04S032
40	ALGU04S040
50	ALGU04S050
65	ALGU04S065
80	ALGU04S080
100	ALGU04S100

Acoples GUILLEMIN NF E-29572

GUILLEMIN NF E-29572 Fittings
Raccords GUILLEMIN NF E-29572
Raccordi GUILLEMIN NF E-29572



GUILLEMIN aluminio con cierre -para manguera

GUILLEMIN aluminium with closure-For hose

GUILLEMIN aluminium avec fermeture-Pour tuyau

GUILLEMIN alluminio con chiusura-Per tubo



L (mm)	SIZE TAMAÑO	Part n° Referencia
37	40	ALGU05C040040
37	40	ALGU05C040045
50	50	ALGU05C050050
50	50	ALGU05C050055
50	65	ALGU05C065065
70	80	ALGU05C080080
97	100	ALGU05C100100

GUILLEMIN -junta NBR

GUILLEMIN -NBR joint

GUILLEMIN -joint NBR

GUILLEMIN -Guarnizioni NBR



DN	SIZE TAMAÑO	Part n° Referencia
20	3/4"	NBRGU020
25	1"	NBRGU025
32	1"1/4	NBRGU032
40	1"1/2	NBRGU040
50	2"	NBRGU050
65	2"1/2	NBRGU065
80	3"	NBRGU080
100	4"	NBRGU100

GUILLEMIN ACERO INOXIDABLE | STAINLESS STEEL



EN 14420-8 | NF E-29572

Ver ficha técnica | Check technical sheet

Aplicaciones de presión y aspiración en un amplio rango de industrias
Pressure and suction purposes in a wide range of industries

Acoples TW DIN 28450

TW DIN 28450 Fittings
Raccords TW DIN 28450
Raccordi TW DIN 28450



TW latón -Rosca hembra - acople hembra BSP

TW brass -Female thread - female coupling

TW laiton -Filetage Femelle - accouplement Femelle BSP

TW ottone -Filetto femmina- accoppiamento femmina BSP



DN	Part n° Referencia
2"	BRMK05032
3"	BRMK08048
4"	BRMK10064

TW latón -Rosca hembra - acople macho BSP

TW brass -Female thread - male coupling

TW laiton - Filetage Femelle - accouplement Male BSP

TW ottone -Filetto femmina- accoppiamento maschio BSP



DN	Ø	Part n° Referencia
2"	70.5	BRVK05032
3"	102	BRVK08048
4"	128	BRVK10064

TW aluminio -Tapón - acople hembra

TW aluminum -Female Dust Cap coupling

TW aluminium -Bouchon - accouplement Femelle

TW alluminio -Tappo- accoppiamento femmina



DN	Part n° Referencia	Part N° STA Referencia STA
2"	ALMB050	BRMB050
3"	ALMB080	BRMB080
4"	ALMB100	BRMB100

TW aluminio -Tapón - acople macho

TW aluminum - Male Dust Plug coupling

TW aluminium -Bouchon - accouplement Mâle

TW alluminio -Tappo- accoppiamento maschio



DN	Ø	Part n° Referencia	Part N° STA Referencia STA
2"	70.5	ALVB050	BRVB050
3"	102	ALVB080	BRVB080
4"	128	ALVB100	BRVB100



BARCELONA aluminio -Rosca hembra BSP

BARCELONA aluminium- Female thread BSP

BARCELONA aluminium- Filetage femelle BSP

BARCELONA Alluminio- Filetto femmina BSP



THREAD ROSCA	SIZE TAMAÑO	Part nº Referencia
1"	DN 25	ALBA0102516
1" 1/2	DN 45	ALBA0104524
2" 1/2	DN 70	ALBA0107040

BARCELONA aluminio -Reductor

BARCELONA aluminium- Reducer

BARCELONA aluminium- Reducteur

BARCELONA Alluminio- Riduttore



SIZE TAMAÑO	Part nº Referencia
70-45	ALBA03070045
45-25	ALBA03045025

BARCELONA aluminio -Para manguera

BARCELONA aluminium- For hose

BARCELONA aluminium- Pour tuyau

BARCELONA Alluminio- Per tubo



DN	Part nº Referencia
25	ALBA05025025
45	ALBA05045045
70	ALBA05070070

Juntas NBR BARCELONA

NBR BARCELONA seals

Joints NBR BARCELONA

Guarnizioni NBR BARCELONA



DN	Part nº Referencia
25	NBRBA025
45	NBRBA045
70	NBRBA070

BARCELONA aluminio -Rosca macho BSP

BARCELONA aluminium- Male thread BSP

BARCELONA aluminium- Filetage mâle BSP

BARCELONA Alluminio- Filetto maschio BSP



THREAD ROSCA	SIZE TAMAÑO	Part nº Referencia
1"	25	ALBA0202516
1" 1/2	45	ALBA0204524
2" 1/2	70	ALBA0207040

BARCELONA aluminio -Tapón

BARCELONA aluminium- Dust Cap

BARCELONA aluminium- Bouchon

BARCELONA Alluminio- Tappo



SIZE TAMAÑO	Part nº Referencia
25	ALBA04025
45	ALBA04045
70	ALBA04070

Acoples STORZ DIN 1430

STORZ DIN 1430 Fittings
Raccords STORZ DIN 1430
Raccordi STORZ DIN 1430



STORZ aluminio- Rosca hembra BSP

STORZ aluminium- Female thread BSP

STORZ aluminium- Filetage femelle BSP

STORZ Alluminio- Filetto femmina BSP



DN	THREAD ROSCA	Part nº Referencia
25	1"	ALST01025D16
38	1"1/2	ALST0103824
52	2"	ALST01052C32
65	2"1/2	ALST0106540
75	3"	ALST01075B48
110	4"	ALST01110A64

STORZ aluminio- Reductor

STORZ aluminium- Reducer

STORZ aluminium- Reducteur

STORZ Alluminio- Riduttore



DN	Part nº Referencia
25-52	ALST03052C025D
52-75	ALST03075B052C
65-110	ALST03110A065
75-110	ALST03110A075B

STORZ aluminio- Para manguera

STORZ aluminium- For hose

STORZ aluminium- Pour tuyau

STORZ Alluminio- Per tubo



DN	Part nº Referencia
25	ALST05025D
38	ALST05038038
52	ALST05052C052
65	ALST05065065
75	ALST05075B075
100	ALST05110A100

Juntas NBR STORZ

STORZ - NBR Seals

Joints STORZ - NBR

STORZ - Guarnizioni NBR



DN	Part nº Referencia
25	NBRST025D
38	NBRST038
52	NBRST052C
65	NBRST065
75	NBRST075B
100	NBRST110A

STORZ aluminio- Rosca macho BSP

STORZ aluminium- Male thread BSP

STORZ aluminium- Filetage mâle BSP

STORZ Alluminio- Filetto maschio BSP



DN	THREAD ROSCA	Part nº Referencia
25	1"	ALST02025D16
	1"1/2	ALST0203820
52	2"	ALST02052C32
65	2"1/2	ALST0206540
75	3"	ALST02075B48
110	4"	ALST02110A64

STORZ aluminio- Tapón

STORZ aluminium- Cap

STORZ aluminium- Bouchon

STORZ Alluminio- Tappo



DN	Part nº Referencia
25	ALST04025D
38	ALST04038
52	ALST04052C
65	ALST04065
75	ALST04075B
100	ALST04110A

Acoples EA DIN 3489

EA DIN 3489 Fittings
Raccords EA DIN 3489
Raccordi EA DIN 3489



EA acero- Rosca hembra BSP

EA steel- Female thread BSP

EA acier- Filetage femelle BSP

EA acciaio - Filetto femmina BSP



THREAD ROSCA	Part n° Referencia
1/2"	EA0108
3/4"	EA0112
1"	EA0116

EA acero- Rosca macho BSP

EA steel- Male thread BSP

EA acier- Filetage mâle BSP

EA acciaio - Filetto maschio BSP



THREAD ROSCA	Part n° Referencia
1/2"	EA0208
3/4"	EA0212
1"	EA0216

EA acero- Tapón

EA steel- Cap

EA acier- Bouchon

EA acciaio - Tappo



DESCRIPTION DESCRIPCIÓN	Part n° Referencia
Tapón	EA04

EA acero- Para manguera c/collar

EA steel- For hose

EA acier- Pour tuyau avec collier

EA acciaio - Per tubo



DN	Part n° Referencia
13	EA0513
16	EA0516
19	EA0519
25	EA0525

Juntas NBR EA

EA NBR seals

Joints NBR EA

Guarnizioni EA NBR



DN	Part n° Referencia
for all sizes	NBREA

Acoples UA CHICAGO

UA CHICAGO Fittings
Raccords UA CHICAGO
Raccordi UA CHICAGO



UA CHICAGO acero- Rosca hembra NPT

UA CHICAGO steel- Female thread NPT

UA CHICAGO acier- Filetage femelle NPT

UA CHICAGO acciaio - Filetto femmina NPT



THREAD ROSCA	Part n° Referencia
1/4" NPT	UA0104
3/8" NPT	UA0106
1/2" NPT	UA0108
3/4" NPT	UA0112
1" NPT	UA0116
1" 1/4" NPT	UA0120
1" 1/2" NPT	UA0124
2" NPT	UA0132

UA CHICAGO acero- Rosca macho NPT

UA CHICAGO steel- Male thread NPT

UA CHICAGO acier- Filetage mâle NPT

UA CHICAGO acciaio - Filetto maschio NPT



THREAD ROSCA	Part n° Referencia
1/4" NPT	UA0204
3/8" NPT	UA0206
1/2" NPT	UA0208
3/4" NPT	UA0212
1" NPT	UA0216
1 1/4" NPT	UA0220
1 1/2" NPT	UA0224
2" NPT	UA0232

UA CHICAGO acero- Tapón

UA CHICAGO steel- Cap

UA CHICAGO acier- Bouchon

UA CHICAGO acciaio - Tappo



Part n° Referencia
UA0402

UA CHICAGO acero- Para manguera c/collar

UA CHICAGO steel- For hose

UA CHICAGO acier- Pour tuyau avec collier

UA CHICAGO acciaio - Per tubo



DN	Part n° Referencia
7	UA0507
10	UA0510
13	UA0513
19	UA0519
25	UA0525
32	UA0532
38	UA0538
50	UA0550

NBR JUNTAS UA CHICAGO

UA CHICAGO NBR seals

Joints NBR UA CHICAGO

Guarnizioni UA CHICAGO NBR



DN	Part n° Referencia
for all sizes	NBRUA02

Acoples EXPRESS NF E-29-573

EXPRESS NF E-29-573 Fittings
Raccords EXPRESS NF E-29-573
Raccordi EXPRESS NF E-29-573



EXPRESS latón- Rosca hembra BSP

EXPRESS brass- Female thread BSP

EXPRESS laiton- Filetage femelle BSP

EXPRESS ottone - Filetto femmina BSP



THREAD ROSCA	Part n° Referencia
1/4"	BREX0104
3/8"	BREX0106
1/2"	BREX0108
3/4"	BREX0112
1"	BREX0116
1" 1/4	BREX0120

EXPRESS latón- Rosca macho BSP

EXPRESS brass- Male thread BSP

EXPRESS laiton- Filetage mâle BSP

EXPRESS ottone - Filetto maschio BSP



THREAD ROSCA	Part n° Referencia
1/4"	BREX0204
3/8"	BREX0206
1/2"	BREX0208
3/4"	BREX0212
1"	BREX0216
1" 1/4	BREX0220

Juntas NBR EXPRESS

NBR EXPRESS seals

Joints NBR EXPRESS

Guarnizioni EXPRESS



DN	Part n° Referencia
for all sizes	NBEX

EXPRESS latón- Tapón

EXPRESS brass- Cap

EXPRESS laiton- Bouchon

EXPRESS ottone - Tappo



DESCRIPTION DESCRIPCIÓN	Part n° Referencia
Tapón	BREX04

EXPRESS latón- Para manguera

EXPRESS brass- For hose

EXPRESS laiton- Pour tuyau

EXPRESS ottone - Per tubo



Ø OUTER Ø EXT.	SIZE TAMAÑO	Part n° Referencia
9	7-9	BREX0508
10	8-10	BREX0510
12	11-13	BREX0513
14	13-16	BREX0514
17	16-18	BREX0517
20	19-21	BREX0519
26	25-27	BREX0525
31	30-32	BREX0532

Acoples GEKA

GEKA Fittings
Raccords GEKA
Raccordi GEKA



GEKA latón -Rosca hembra BSP

GEKA brass- Female thread BSP

GEKA laiton- Filetage femelle BSP

GEKA ottone - Filetto femmina BSP



THREAD ROSCA	Part n° Referencia
3/8"	BRGE0106
1/2"	BRGE0108
3/4"	BRGE0112
1"	BRGE0116
1"1/4	BRGE0120
1"1/2	BRGE0124

GEKA latón -Rosca macho BSP

GEKA brass- Male thread BSP

GEKA laiton- Filetage mâle BSP

GEKA ottone - Filetto maschio BSP



THREAD ROSCA	Part n° Referencia
3/8"	BRGE0206
1/2"	BRGE0208
3/4"	BRGE0212
1"	BRGE0216
1"1/4	BRGE0220
1"1/2	BRGE0224

Juntas NBR GEKA

NBR GEKA seals

Joints NBR GEKA

Guarnizioni NBR GEKA



DN	Part n° Referencia
for all sizes	NBRGE

GEKA latón -Tapón

GEKA brass- Plug

GEKA laiton- Bouchon

GEKA ottone - Tappo



DESCRIPTION DESCRIPCIÓN	Part n° Referencia
Plug	BRGE04

GEKA latón -Para manguera

GEKA brass- For hose

GEKA laiton- Pour tuyau

GEKA ottone - Per tubo



DN	Part n° Referencia
10	BRGE0510
13	BRGE0513
16	BRGE0516
19	BRGE0519
25	BRGE0525
32	BRGE0532
38	BRGE0538

Acoples CAMLOCK MORTERO

MORTAR CAMLOCK Fittings
Raccords MORTIER CAMLOCK
Raccordi CAMLOCK MORTAIO



CAMLOCK MORTERO Tipo A BSP

A Type MORTAR CAMLOCK BSP

CAMLOCK MORTIER Type A BSP

CAMLOCK MORTAIO Tipo A BSP



DN	SERIE	THREAD ROSCA	Part n° Referencia
25	22	1"	MT22A2516
27	22	1"	MT22A2716
35	22	1" 1/4	MT22A3520
35	22	1" 1/2	MT22A3524
50	22	2"	MT22A5032
35	23.5	1" 1/4	MT23A3520
35	23.5	1" 1/2	MT23A3524
50	23.5	2"	MT23A5032

CAMLOCK MORTERO Tipo C

C Type MORTAR CAMLOCK

CAMLOCK MORTIER Type C

CAMLOCK MORTAIO Tipo C



DN	SERIE	Part n° Referencia
27	22	MT22C2725
35	22	MT22C3535
50	22	MT22C5050
35	23.5	MT23C3535
50	23.5	MT23C5050

CAMLOCK MORTERO Tipo D BSP

D Type MORTAR CAMLOCK BSP

CAMLOCK MORTIER Type D BSP

CAMLOCK MORTAIO Tipo D BSP



DN	SERIE	THREAD ROSCA	Part n° Referencia
25	22	1"	MT22D2516
27	22	1"	MT22D2716
35	22	1" 1/4	MT22D3520
35	22	1" 1/2	MT22D3524
50	22	2"	MT22D5032
35	23.5	1" 1/4	MT23D3520
35	23.5	1" 1/2	MT23D3524
50	23.5	2"	MT23D5032

CAMLOCK MORTERO Tipo E

E Type MORTAR CAMLOCK

CAMLOCK MORTIER Type E

CAMLOCK MORTAIO Tipo E



DN	SERIE	Part n° Referencia
25	22	MT22E2525
27	22	MT22E2725
35	22	MT22E3535
50	22	MT22E5050
35	23.5	MT23E3535
50	23.5	MT23E5050

Acoples CHORRO DE ARENA

SANDBLAST Fittings
Raccords SABLAGE
Raccordi per SABBIAATURA



CHORRO DE ARENA aluminio acople - para manguera

SANDBLAST aluminum -for hose

SABLAGE aluminium -pour le tuyau

Raccordo SABBIAATURA alluminio -per tubo



DN	Part nº Referencia
19	ALCH0519
25	ALCH0525
32	ALCH0532
38	ALCH0538

CHORRO DE ARENA aluminio para manguera - rosca hembra BSP

SANDBLAST aluminum -for hose-Female thread
BSP

SABLAGE aluminium -Filetage femelle BSP pour
tuyau

Raccordo SABBIAATURA alluminio -per tubo- Filetto
femmina BSP



DN	THREAD ROSCA	Part nº Referencia
19	1" 1/4	ALCH071219
25	1" 1/4	ALCH071625
32	1" 1/4	ALCH072032
38	1" 1/4	ALCH072438

CHORRO DE ARENA aluminio acople - rosca hembra BSP

SANDBLAST aluminum -Female thread BSP

SABLAGE aluminium -Filetage femelle BSP

Raccordo SABBIAATURA alluminio -Filetto femmina
BSP



THREAD ROSCA	Part nº Referencia
1" 1/4	ALCH0120
1" 1/2	ALCH0124

CHORRO DE ARENA latón acople - para manguera

SANDBLAST brass -for hose

SABLAGE laiton -pour le tuyau

Raccordo SABBIAATURA ottone -per tubo



DN	Part nº Referencia
19	BRCH0519
25	BRCH0525
32	BRCH0532
38	BRCH0538

CHORRO DE ARENA latón para manguera - rosca hembra BSP

SANDBLAST brass -for hose-Female thread BSP

SABLAGE laiton -Filetage femelle BSP pour
tuyau

Raccordo SABBIAATURA ottone -per tubo- Filetto
femmina BSP



DN	THREAD ROSCA	Part nº Referencia
19	1" 1/4	BRCH071219
25	1" 1/4	BRCH071625
32	1" 1/4	BRCH072032
38	1" 1/4	BRCH072438

CHORRO DE ARENA latón acople - rosca hembra BSP

SANDBLAST brass -Female thread BSP

SABLAGE laiton -Filetage femelle BSP

Raccordo SABBIAATURA ottone -Filetto femmina
BSP



THREAD ROSCA	Part nº Referencia
1" 1/4	BRCH0120
1" 1/2	BRCH0124

Acoples CHORRO DE ARENA

SANDBLAST Fittings
Raccords SABLAGE
Raccordi per SABBIATURA



CHORRO DE ARENA nylon acople - para manguera

SANDBLAST nylon for hose

SABLAGE nylon pour le tuyau

Raccordo SABBIATURA nylon per tubo



DN	Part nº Referencia
19	NYCH0519
25	NYCH0525
32	NYCH0532
38	NYCH0538

CHORRO DE ARENA nylon acople - rosca hembra BSP

SANDBLAST nylon female thread BSP

SABLAGE nylon filetage femelle BSP

Raccordo SABBIATURA nylon filetto femmina BSP



THREAD ROSCA	Part nº Referencia
1" 1/4	NYCH0120
1" 1/2	NYCH0124

CHORRO DE ARENA nylon para manguera - rosca hembra BSP

SANDBLAST nylon for hose female thread BSP

SABLAGE nylon filetage femelle BSP pour tuyau

Raccordo SABBIATURA nylon per tubo filetto femmina BSP



DN	THREAD ROSCA	Ø INNER Ø INT.	Part nº Referencia
25	1" 1/4 BSP	38.75	NYCH071625
32	1" 1/4 BSP	50.20	NYCH072032
38	1" 1/4 BSP	55.60	NYCH072438

Juntas NBR CHORRO DE ARENA

SANDBLAST NBR Seals

SABLAGE Joints NBR

SABBIATURA - Guarnizioni NBR



DN	Part nº Referencia
for all sizes	NBRCH

Acoples BAUER

BAUER Fittings
Raccords BAUER
Raccordi BAUER



BAUER acero kit

BAUER carbon steel kit

BAUER acier kit

BAUER acciaio kit



DN	ØRT	Part n° Referencia
2"	50	BE050
3"	76	BE076
4"	108	BE108

BAUER acero macho

BAUER carbon steel male

BAUER acier mâle

BAUER acciaio maschio



DN	ØRT	Part n° Referencia
2"	50	BEM050
3"	76	BEM076
4"	108	BEM108

BAUER acero hembra

BAUER carbon steel female

BAUER acier femelle

BAUER acciaio femmina



DN	ØRT	Part n° Referencia
2"	50	BEF050
3"	76	BEF076
4"	108	BEF108

Juntas NBR BAUER

NBR BAUER seals

Joints NBR BAUER

Guarnizioni NBR BAUER



DN	Part n° Referencia
2"	NBRBE050
3"	NBRBE076
4"	NBRBE108

Acoples PERROT

PERROT Fittings
Raccords PERROT
Raccordi PERROT



PERROT acero kit

PERROT carbon steel kit

PERROT acier kit

PERROT acciaio kit



DN	Ø OUTER Ø EXT.	Part n° Referencia
2"	52.3	PE050
3"	77.4	PE089
4"	102.4	PE108

PERROT acero macho

PERROT carbon steel male

PERROT acier mâle

PERROT acciaio maschio



DN	Ø OUTER Ø EXT.	Part n° Referencia
2"	52.3	PEM050
3"	77.4	PEM089
4"	102.4	PEM108

PERROT acero hembra

PERROT carbon steel female

PERROT acier femelle

PERROT acciaio femmina



DN	Ø OUTER Ø EXT.	Part n° Referencia
2"	52.3	PEF050
3"	77.4	PEF089
4"	102.4	PEF108

Juntas NBR PERROT

NBR PERROT seals

Joints NBR PERROT

Guarnizioni NBR PERROT



DN	Part n° Referencia
2"	NBRPE050
3"	NBRPE089
4"	NBRPE108

Acoples vapor tipo BOSS

Steam fittings BOSS type
Raccords vapeur type BOSS
Raccordi per vapore tipo BOSS



BOSS acero kit BSP

BOSS carbon steel kit BSP

BOSS acier kit BSP

BOSS acciaio kit BSP



DN	THREAD ROSCA	Part n° Referencia
1/2"	1/2" BSP	BO0813
3/4"	3/4" BSP	BO1219
1"	1" BSP	BO1625
1"1/4	1" 1/4 BSP	BO2032
1"1/2	1"1/2 BSP	BO2438
2"	2" BSP	BO3251

STD FITTINGS
 +
STD FERRULES
 +
HOSES

CONEXIÓN STD
 +
 CASQUILLO STD
 +
 MANGUERA

Acoples vapor EN 14423

Steam EN 14423 fittings
Raccords vappeur EN 14423
Raccordi per vapore EN 14423



Abrazadera EN 14423 acero

EN 14423 clamp steel

Collier EN 14423 acier

Collare EN 14423 acciaio



DN	Ø INNER Ø INT.	Part nº Referencia
13X6	24-26	AB06024026
19X7	32-34	AB06032034
25X7.5	39-41	AB06039041
32X8	47-50	AB06047050
38X8	53-56	AB06053056
50X9	67-69	AB06067069

Macho Espiga EN 14423 acero

Male-hose tail EN 14423 steel

Mâle à douille EN 14423 acier

Maschio con inserto EN 14423 acciaio



DN	THREAD ROSCA	Part nº Referencia
13	1/2" BSPT	STE0108
19	3/4" BSPT	STE0112
25	1" BSPT	STE0116
32	1" 1/4 BSPT	STE0120
38	1" 1/2 BSPT	STE0124
50	2" BSPT	STE0132

Hembra Espiga EN 14423 acero

Female-hose tail EN 14423 steel

Femelle à douille EN 14423 acier

Femmina con inserto EN 14423 acciaio



DN	THREAD ROSCA	Part nº Referencia
13	1/2" BSP	STE0208
19	3/4" BSP	STE0212
25	1" BSP	STE0216
32	1" 1/4 BSP	STE0220
38	1" 1/2 BSP	STE0224
50	2" BSP	STE0232

Accesorios industriales

Industrial accessories
Accessoires industriels
Accessori industriale



Campana aluminio para racor industrial - cierre 45°

Crimping Ferrule 45° closure (aluminium)

*Jupe aluminium pour raccord industriel
-fermeture 45°*

*Boccola in alluminio per raccordo industriale-
chiusura 45°*



Ø INNER Ø INT.	Part nº Referencia
11	ALCA011000
12.9	ALCA012900
13.4	ALCA013400
14.5	ALCA014500
15.5	ALCA015500
17.5	ALCA017500
18.5	ALCA018500
20.5	ALCA020500
21.5	ALCA021500
24.5	ALCA024500
26.5	ALCA026500
28.5	ALCA028500
30	ALCA030000
33	ALCA033000
36	ALCA036000
39	ALCA039000
46	ALCA046000
43	ALCA043000
48	ALCA048000
50	ALCA050000
54	ALCA054000
56.5	ALCA056500
63	ALCA063000
67	ALCA067000
84	ALCA083000
98	ALCA099000
123	ALCA121000

Abrazadera EN 14420-3 aluminio

Clamp EN 14420-3 aluminium

Collier EN 14420-3 aluminium

Collare EN 14420-3 alluminio



Ø HOSE Ø MANGUERA	Ø INNER Ø INT.	Part nº Referencia
13x5	21-25 mm	ALAB01021025
19X6	29-33 mm	ALAB01029033
25x5	34-37 mm	ALAB01034037
25x6	36-39 mm	ALAB01036039
32X5	41-44 mm	ALAB01041044
32x6	42-46 mm	ALAB01042046
38X5	47-51 mm	ALAB01047051
38X6.5	49-53 mm	ALAB01049053
38x8	52-56 mm	ALAB01052056
38x10	56-60 mm	ALAB01056060
50X5.5	62-64 mm	ALAB01060064
50x8	63-67 mm	ALAB01063067
50X10	68-72 mm	ALAB01068072
63x6	74-77 mm	ALAB01074077
63X8	77-81 mm	ALAB01077081
65x10	84-87 mm	ALAB01084087
75x6	87-90 mm	ALAB01087090
75x8	89-94 mm	ALAB01089094
75X10	94-98 mm	ALAB01094098
100x8	114-119 mm	ALAB01114119

Abrazadera EXPRESS acero

Clamp EXPRESS steel

Collier EXPRESS acier

Collare EXPRESS acciaio



Ø INNER Ø INT.	Part nº Referencia
19-21 mm	AB031921
22-24 mm	AB032224
25-27 mm	AB032527
28-30 mm	AB032830
31-33 mm	AB033133
34-36 mm	AB033436
37-39 mm	AB033739

Accesorios industriales

Industrial accessories
Accessoires industriels
Accessori industriale



Abrazadera tipo BOSS acero

Clamp BOSS type steel

Collier type BOSS acier

Collare tipo BOSS acciaio



Ø INNER Ø INT.	Nº BOLTS Nº TORNILLOS	Part nº Referencia
24-27 mm	2	AB05024027
30-33 mm	2	AB05030033
38-43 mm	2	AB05038043
38-43 mm	4	AB05438043
43-49 mm	4	AB05043049
54-60 mm	4	AB05054060
63-71 mm	4	AB05063071

Abrazadera DIN 20039 A acero

Clamp DIN 20039 A steel

Collier DIN 20039 A acier

Collare DIN 20039 A acciaio



Ø INNER Ø INT.	Part nº Referencia
22-29 mm	AB04022029
28-34 mm	AB04028034
32-40 mm	AB04032040

Abrazadera alta presión W1 acero

Clamp high pressure W1 steel

Collier haute pression W1 acier

Collare alta pressione W1 acciaio



Ø INNER Ø INT.	Part nº Referencia
17-19mm	AB02017019
20-22mm	AB02020022
23-25mm	AB02023025
26-28mm	AB02026028
29-31mm	AB02029031
32-35mm	AB02032035
36-39mm	AB02036039
40-43mm	AB02040043
44-47mm	AB02044047
48-51mm	AB02048051
52-55mm	AB02052055
56-59mm	AB02056059
60-63mm	AB02060063
64-67mm	AB02064067
68-73mm	AB02068073
74-79mm	AB02074079
80-85mm	AB02080085
86-91mm	AB02086091
92-97mm	AB02092097
98-103mm	AB02098103
104-112mm	AB02104112
113-121mm	AB02113121
122-130mm	AB02122130
131-139mm	AB02131139
140-148mm	AB02140148
149-161mm	AB02149161
162-174mm	AB02162174
175-187mm	AB02175187
188-200mm	AB02188200

Manguera Inox

Stainless steel hose

Tuyau Inox

Tubi inox



■ Mangueras Inox Corrugado y Malla Inox /Convoluted stainless steel hoses and AISI 304 Braid /Tuyaux inox onduleux et Tresse Inox /Tubi Inox corrugato e Maglia Inox | 43



M93211



M93161304



M93161



M93161304..EF



M93162304



M93212



M304



M3160

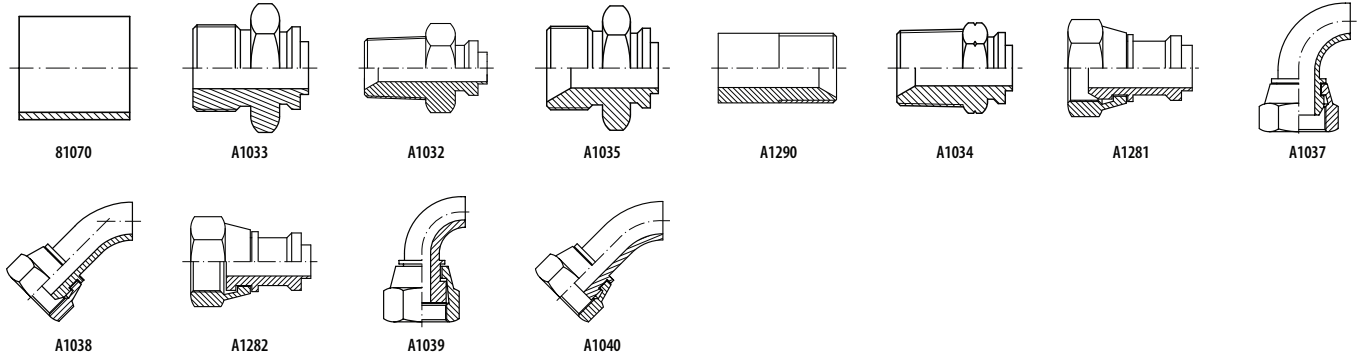
Racores soldables

Welding fittings
Raccords à souder
Raccordi a saldare



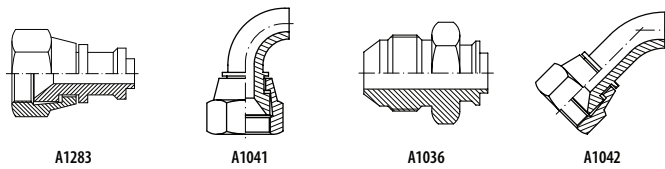
■ Racores soldables BSP /BSP Welding fittings /Raccords à souder BSP /Raccordi a saldare BSP

| 45



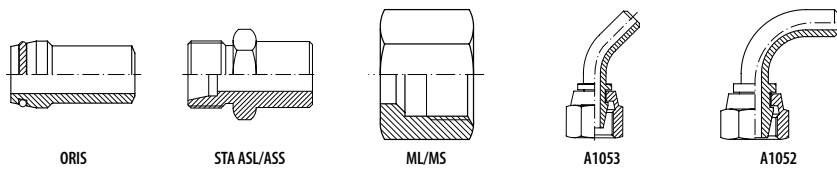
■ Racores soldables JIC 37° /JIC 37° Welding fittings /Raccords à souder JIC 37° /Raccordi a saldare JIC 37°

| 47



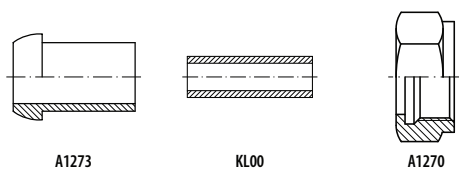
■ Racores soldables métricos /Metric Welding fittings /Raccords à souder métriques /Raccordi a saldare metrici

| 48



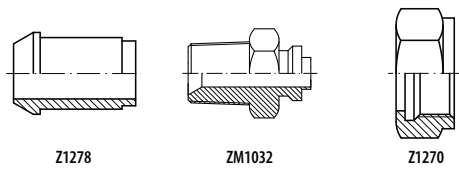
■ Cono y tuerca /Nipple and nut /Collet et écrou /Ogiva e dado

| 50



■ Racores para soldar >2" /Welding fittings >2" /Raccords à souder >2" /Raccordi a saldare > 2"

| 50



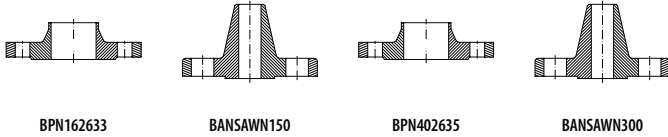
Bridas soldables

Welding flanges
Brides à souder
Flange a saldare

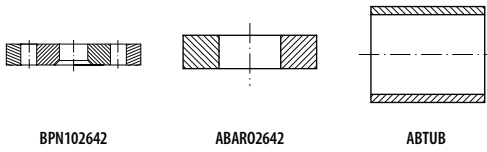


- Bridas fijas para soldar / Fixed Forged flanges / Brides DIN à souder fixes / Flangia a saldare

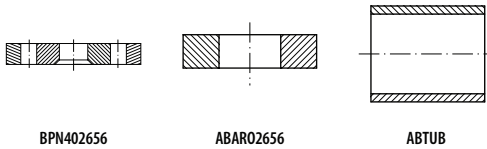
| 51



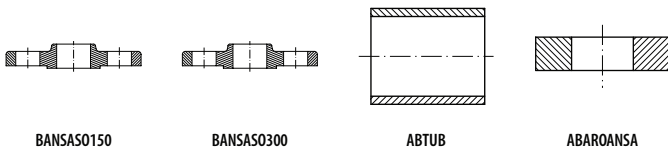
- Conjunto brida DIN 2642 / DIN 2642 swivel flanges set / Ensemble brides tournantes DIN 2642 / Flangia girevole DIN 2642 | 52



- Conjunto brida DIN 2656 / DIN 2656 swivel flanges set / Ensemble brides tournantes DIN 2656 / Flangia girevole DIN 2656 | 53



- Conjunto brida ANSI-ASA / ANSI-ASA swivel flanges set / Ensemble brides ANSI-ASA / Flangia girevole ANSI-ASA | 54



Manguera Inox

Stainless steel hose

Tuyau Inox

Tubi inox



Inox corrugado AISI 321 con una malla AISI 304

Convuluted S.S. AISI 321 hose with one braid S.S. AISI 304

Inox onduleux AISI 321 avec une tresse inox AISI 304

Tubo in Inox corrugato 321 con una maglia AISI 304



DN	Ø INNER Ø INT.	Part n° Referencia
1/4"	6.2	M93211006
3/8"	10.3	M93211010
1/2"	12.2	M93211012
5/8"	16.2	M93211016
3/4"	20.2	M93211020
1"	25.4	M93211025
1" 1/4	34.3	M93211032
1" 1/2	40.1	M93211040
2"	50.3	M93211050
2" 1/2	65.6	M93211065
3"	80.3	M93211080
4"	100.8	M93211100

Inox corrugado AISI 316 con una malla AISI 304

Convuluted S.S. AISI 316 hose with one braid S.S. AISI 304

Inox onduleux AISI 316 avec une tresse inox AISI 304

Tubo in Inox corrugato 316 con una maglia AISI 304



DN	Ø INNER Ø INT.	Part n° Referencia
1/4"	6.2	M93161304006
3/8"	10.3	M93161304010
1/2"	12.2	M93161304012
3/4"	20.2	M93161304020
1"	25.4	M93161304025
1" 1/4	34.3	M93161304032
1" 1/2	40.1	M93161304040
2"	50.3	M93161304050
2" 1/2	65.6	M93161304065
3"	80.3	M93161304080
4"	100.8	M93161304100

Inox corrugado AISI 316 con una malla AISI 316

Convuluted S.S. AISI 316 hose with one braid S.S. AISI 316

Inox onduleux AISI 316 avec une tresse inox AISI 316

Tubo in Inox corrugato 316 con una maglia AISI 316



DN	Ø INNER Ø INT.	Part n° Referencia
1/4"	6.2	M93161006
3/8"	10.3	M93161010
1/2"	12.2	M93161012
3/4"	20.2	M93161020
1"	25.4	M93161025
1" 1/4	34.3	M93161032
1" 1/2	40.1	M93161040
2"	50.3	M93161050
2" 1/2	65.6	M93161065
3"	80.3	M93161080
4"	100.8	M93161100

Inox corrugado AISI 316 con una malla AISI 304 extra flexible

Convuluted S.S. AISI 316 hose with one braid S.S. AISI 304 extra flexible

Inox onduleux AISI 316 avec une tresse inox AISI 304 extra flexible

Tubo inox corrugato AISI 316 con una treccia inox AISI 304 extra flessibile



DN	Ø INNER Ø INT.	Part n° Referencia
3/4"	20	M93161304020EF
1"	25	M93161304025EF
1" 1/4	34.3	M93161304032EF
1" 1/2	39.8	M93161304040EF
2"	50	M93161304050EF

Inox corrugado AISI 316 con dos mallas AISI 304

Convuluted S.S. AISI 316 hose with two braids S.S. AISI 304

Inox onduleux AISI 316 avec deux tresses inox AISI 304

Tubo in Inox corrugato 316 con due maglie AISI 304



DN	Ø INNER Ø INT.	Part n° Referencia
1/4"	6.2	M93162304006
3/8"	10.3	M93162304010
1/2"	12.2	M93162304012
3/4"	20.2	M93162304020
1"	25.4	M93162304025
1" 1/4	34.3	M93162304032
1" 1/2	40.1	M93162304040
2"	50.3	M93162304050
2" 1/2	65.6	M93162304065
3"	80.3	M93162304080
4"	100.8	M93162304100

Manguera Inox

Stainless steel hose

Tuyau Inox

Tubi inox



Malla inox 304

AISI 304 braid

Tresse inox 304

Maglia di acciaio Inox 304



Ø INNER Ø INT.	Part nº Referencia
9,6	M304009.6
12,3	M304012.3
14,3	M304014.3
16,7	M304016.7
21,6	M304021.6
26,8	M304026.8
32,2	M304032.2
41,1	M304041.1
49,8	M304049.8
60,3	M304060.3
80,8	M304080.8

Malla inox 316

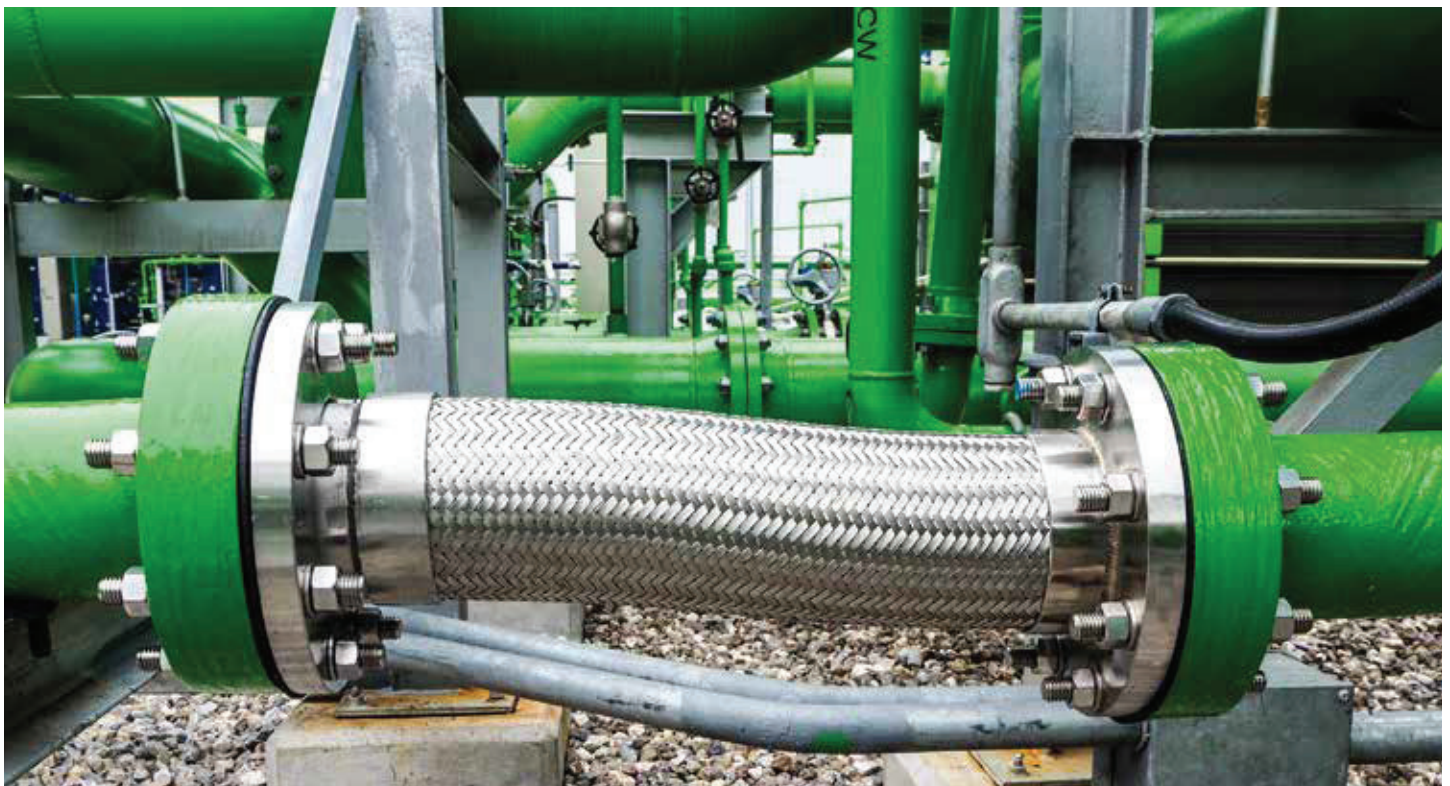
AISI 316 braid

Tresse inox 316

Maglia di acciaio Inox 316



Ø INNER Ø INT.	Part nº Referencia
9,6	M316009.6
12,3	M316012.3
14,3	M316014.3
16,7	M316016.7
21,6	M316021.6
26,8	M316026.8
32,2	M316032.2
41,1	M316041.1
49,8	M316049.8
60,3	M316060.3
80,8	M316080.8



Amplia variedad de manguera inoxidable corrugado para instalaciones en el sector químico, centrales eléctricas y plantas petroquímicas.

Wide range of convoluted stainless steel hoses for a variety of facilities, such us chemical sector, power plant, oil and gas.

Racores soldables

Welding fittings
Raccords à souder
Raccordi a saldare

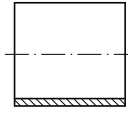


Casquillo soldable Inox corrugado

Convuluted SS welding ferrule

Jupe à souder Inox convoluté

Boccola a saldare per inox corrugato



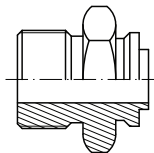
DN	Ø INNER Ø INT.	Part nº Referencia
1/4"	14	810700400
1/4"	12	810700401
3/8"	19	810700600
3/8"	17	810700601
1/2"	22	810700800
1/2"	19	810700801
5/8"	25	810701000
3/4"	30	810701200
3/4"	32	810701201
1"	35	810701500
1"	38	810701600
1"1/4"	47,8	810702000
1"1/4"	44,3	810702001
1"1/2"	56,3	810702400
2"	66	810703201
2"1/2"	84,9	810704000
2"1/2"	95,6	810704001
3"	100	810704801
4"	125	810706400

Macho fijo BSP asiento plano - soldable con guía

Welding fixed male BSP flat seat with guide

Mâle fixe BSP fond plat à souder avec guide

Maschio BSP faccia piana, a saldare con guida



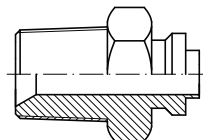
DN	THREAD ROSCA	Part nº Referencia
1/4"	1/4" BSP	A103304
3/8"	3/8" BSP	A103306
1/2"	1/2" BSP	A103308
3/4"	3/4" BSP	A103312
1"	1" BSP	A103316
1"1/4"	1"1/4 BSP	A103320
1"1/2"	1"1/2 BSP	A103324
2"	2" BSP	A103332

Macho cónico BSPT con guía

Welding adaptor BSPT with guide

Mamelon hexagonal BSPT conique à souder (bw) + guide

Maschio conico BSPT con guida



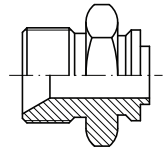
DN	THREAD ROSCA	Part nº Referencia
1/4"	1/4" BSPT	A103204
3/8"	3/8" BSPT	A103206
1/2"	1/2" BSPT	A103208
3/4"	3/4" BSPT	A103212
1"	1" BSPT	A103216
1"1/4"	1"1/4 BSPT	A103220
1"1/2"	1"1/2 BSPT	A103224
2"	2" BSPT	A103232
2"1/2"	2"1/2 BSPT	A103240

Macho BSP cono 60° con guía

Welding adaptor BSP 60° with guide

Mamelon hexagonal BSP à souder (bw) + guide

Maschio BSP a saldare sede 60° con guida



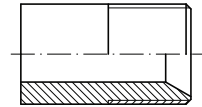
DN	THREAD ROSCA	Part nº Referencia
1/4"	1/4" BSP	A103504
3/8"	3/8" BSP	A103506
1/2"	1/2" BSP	A103508
3/4"	3/4" BSP	A103512
1"	1" BSP	A103516
1"1/4"	1"1/4 BSP	A103520
1"1/2"	1"1/2 BSP	A103524
2"	2" BSP	A103532

Empalme liso soldable rosca BSP (60°)

Welding union BSP male (60°)

Embout mâle lisse à souder gaz cyl BSP (60°)

Mezzo nipples tondo a saldare BSP 60°



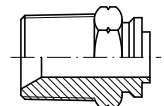
THREAD ROSCA	Part nº Referencia
1/8" BSP	A129002
1/4" BSP	A129004
3/8" BSP	A129006
1/2" BSP	A129008
3/4" BSP	A129012
1" BSP	A129016
1"1/4 BSP	A129020
1"1/2 BSP	A129024
2" BSP	A129032

Macho fijo NPT - soldable con guía

Welding fixed male NPT flat seat with guide

Mâle fixe NPT à souder avec guide

Maschio NPT, a saldare con guida



DN	THREAD ROSCA	Part nº Referencia
1/4"	1/4" NPT	A103404
3/8"	3/8" NPT	A103406
1/2"	1/2" NPT	A103408
3/4"	3/4" NPT	A103412
1"	1" NPT	A103416
1" 1/4"	1" 1/4 NPT	A103420
1" 1/2"	1" 1/2 NPT	A103424
2"	2" NPT	A103432

Racores soldables

Welding fittings
Raccords à souder
Raccordi a saldare

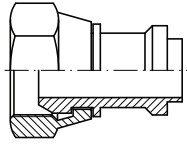


Hembras giratorias prensada BSP 60° - soldable con guía

Welding BSP swivel female 60° with guide

Femelle tournante BSP 60° à souder avec guide

Femmina diritta girevole BSP, a saldare con guida



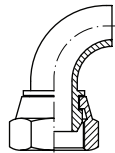
DN	THREAD ROSCA	Part n° Referencia
1/4"	1/4" BSP	A128104
3/8"	3/8" BSP	A128106
1/2"	1/2" BSP	A128108
3/4"	3/4" BSP	A128112
1"	1" BSP	A128116
1" 1/4	1" 1/4 BSP	A128120
1" 1/2	1" 1/2 BSP	A128124

Hembras giratorias prensada 90° BSP 60° - soldable

Welding 90° BSP swivel female 60°

Femelle tournante 90° à souder

Femmina 90° girevole BSP, a saldare



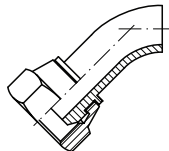
DN	THREAD ROSCA	Part n° Referencia
1/4"	1/4" BSP	A103704
3/8"	3/8" BSP	A103706
1/2"	1/2" BSP	A103708
3/4"	3/4" BSP	A103712
1"	1" BSP	A103716
1" 1/4	1" 1/4 BSP	A103720
1" 1/2	1" 1/2 BSP	A103724
2"	2" BSP	A103732

Hembras giratorias prensada 45° BSP 60° - soldable

Welding 45° BSP swivel female 60°

Femelle tournante 45° à souder

Femmina 45° girevole BSP, a saldare



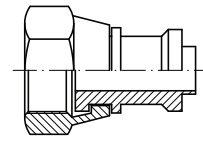
DN	THREAD ROSCA	Part n° Referencia
1/4"	1/4" BSP	A103804
3/8"	3/8" BSP	A103806
1/2"	1/2" BSP	A103808
3/4"	3/4" BSP	A103812
1"	1" BSP	A103816
1" 1/4	1" 1/4 BSP	A103820
1" 1/2	1" 1/2 BSP	A103824
2"	2" BSP	A103832

Hembras giratorias prensada BSP asiento plano - soldable con guía

Welding BSP swivel female flat seat

Femelle tournante BSP à souder fond plat

Femm. gir. BSP faccia piana, a saldare con guida



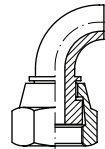
DN	THREAD ROSCA	Part n° Referencia
1/4"	1/4" BSP	A128204
3/8"	3/8" BSP	A128206
1/2"	1/2" BSP	A128208
3/4"	3/4" BSP	A128212
1"	1" BSP	A128216
1" 1/4	1" 1/4 BSP	A128220
1" 1/2	1" 1/2 BSP	A128224
2"	2" BSP	A128232

Hembras giratorias prensada 90° BSP asiento plano - soldable

Welding 90° BSP swivel female 60° flat seat

Femelle tournante 90° à souder fond plat

Femm. 90° gir. BSP faccia piana, a saldare



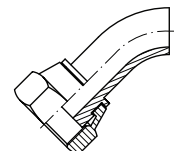
DN	THREAD ROSCA	Part n° Referencia
1/4"	1/4" BSP	A103904
3/8"	3/8" BSP	A103906
1/2"	1/2" BSP	A103908
3/4"	3/4" BSP	A103912
1"	1" BSP	A103916
1" 1/4	1" 1/4 BSP	A103920
1" 1/2	1" 1/2 BSP	A103924
2"	2" BSP	A103932

Hembras giratorias prensada 45° BSP asiento plano - soldable

Welding 45° BSP swivel female 60° flat seat

Femelle tournante 45° à souder fond plat

Femm. 45° gir. BSP faccia piana, a saldare



DN	THREAD ROSCA	Part n° Referencia
1/4"	1/4" BSP	A104004
3/8"	3/8" BSP	A104006
1/2"	1/2" BSP	A104008
3/4"	3/4" BSP	A104012
1"	1" BSP	A104016
1" 1/4	1" 1/4 BSP	A104020
1" 1/2	1" 1/2 BSP	A104024
2"	2" BSP	A104032

Racores soldables

Welding fittings
Raccords à souder
Raccordi a saldare

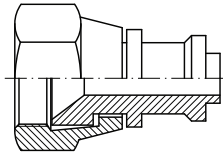


Hembra giratoria prensada JIC 37° - soldable con guía

Welding crimped JIC 37° swivel female with guide

Embout à sertir femelle tournante JIC37° à souder

Femmina girevole JIC 37°, a saldare



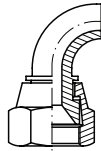
DN	THREAD ROSCA	Part nº Referencia
1/4"	7/16" 20h UNF	A12830704
1/4"	1/2" 20h UNF	A12830804
3/8"	9/16" 18h UNF	A12830906
3/8"	3/4" 16h UNF	A12831206
1/2"	3/4" 16h UNF	A12831208
1/2"	7/8" 14h UNF	A12831408
3/4"	1" 1/16 12h UNF	A12831712
1"	1" 5/16 12h UNF	A12832116
1" 1/4	1" 5/8 12h UNF	A12832620
1" 1/2	1" 7/8 12h UNF	A12833024

Hembra giratoria 90° prensada JIC 37° - soldable

Welding 90° JIC 37° swivel female

Femelle tournante 90° JIC 37° à souder

Femmina 90° girevole JIC 37°, a saldare



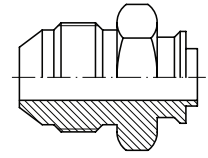
DN	THREAD ROSCA	Part nº Referencia
1/4"	7/16" 20h UNF	A10410704
1/4"	1/2" 20h UNF	A10410804
3/8"	9/16" 18h UNF	A10410906
1/2"	3/4" 16h UNF	A10411208
1/2"	7/8" 14h UNF	A10411408
3/4"	1" 1/16 12h UNF	A10411712
1"	1" 5/16 12h UNF	A10412116
1" 1/4	1" 5/8 12h UNF	A10412620
1" 1/2	1" 7/8 12h UNF	A10413024

Macho JIC 37° - soldable con guía

Welding JIC 37° male with guide

Mâle JIC 37° à souder avec guide

Maschio JIC 37° a saldare con guida



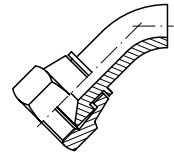
DN	THREAD ROSCA	Part nº Referencia
1/4"	7/16" 20h UNF	A10360704
1/4"	1/2" 20h UNF	A10360804
3/8"	9/16" 18h UNF	A10360906
3/8"	3/4" 16h UNF	A10361206
1/2"	3/4" 16h UNF	A10361208
1/2"	7/8" 14h UNF	A10361408
3/4"	1" 1/16 12h UNF	A10361712
1"	1" 5/16 12h UNF	A10362116
1" 1/4	1" 5/8 12h UNF	A10362620
1" 1/4	1" 7/8 12h UNF	A10363020

Hembra giratoria 45° prensada JIC 37° - soldable

Welding 45° JIC 37° swivel female

Femelle tournante 45° JIC 37° à souder

Femmina 45° girevole JIC 37°, a saldare



DN	THREAD ROSCA	Part nº Referencia
1/4"	7/16" 20h UNF	A10420704
1/4"	1/2" 20h UNF	A10420804
3/8"	9/16" 18h UNF	A10420906
1/2"	3/4" 16h UNF	A10421208
1/2"	7/8" 14h UNF	A10421408
3/4"	1" 1/16 12h UNF	A10421712
1"	1" 5/16 12h UNF	A10422116
1" 1/4	1" 5/8 12h UNF	A10422620
1" 1/2	1" 7/8 12h UNF	A10423024

Racores soldables

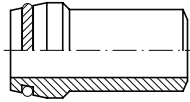
Welding fittings
Raccords à souder
Raccordi a saldare



Boquilla para soldar

Welding nipple

Collet cône Métrique (DIN 2353) à souder (BW)
o'ring



Ogiva a saldare

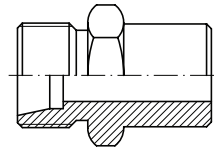
PIPE TUBO	SERIE	Part nº Referencia
15X2.5	L	ORIL 15
18X2.5	L	ORIL 18
22X2.5	L	ORIL 22
28X3	L	ORIL 28
35X4	L	ORIL 35
42X3	L	ORIL 42
6X2	L/S	ORIS 6
8X2	L/S	ORIS 8
8X1.5	L/S	ORIS 8X1.5
10X2	L/S	ORIS 10X2
12X2	L/S	ORIS 12
12X2.5	S	ORIS 12X2.5
14X2	L/S	ORIS 14X2
14X3	S	ORIS 14X3
16X2	S	ORIS 16X2
16X2.5	S	ORIS 16X2.5
16X3	S	ORIS 16X3
20X2.5	S	ORIS 20X2.5
20X3	S	ORIS 20X3
20X4	S	ORIS 20X4
25X4	S	ORIS 25X4
30x4	S	ORIS 30X4
30x5	S	ORIS 30X5
38x5	S	ORIS 38X5

Racor recto para soldar

Weldable straight coupling

Raccord droit à souder

Raccordo diritto a saldare



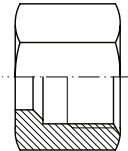
PIPE TUBO	SERIE	Part nº Referencia
6	L	STA ASL 6
8	L	STA ASL 8
10	L	STA ASL 10
12	L	STA ASL 12
15	L	STA ASL 15
18	L	STA ASL 18
22	L	STA ASL 22
28	L	STA ASL 28
35	L	STA ASL 35
42	L	STA ASL 42
6	S	STA ASS 6
8	S	STA ASS 8
10	S	STA ASS 10
12	S	STA ASS 12
14	S	STA ASS 14
16	S	STA ASS 16
20	S	STA ASS 20
25	S	STA ASS 25
30	S	STA ASS 30
38	S	STA ASS 38

Tuerca Métrica DIN 3870

Nuts DIN 3870

Écrou Métrique DIN 3870

Dadi Metrici DIN 3870



PIPE TUBO	SERIE	THREAD ROSCA	Part nº Referencia
4	LL	M8x1	MLL 4 M 8X1
6	LL	M10x1	MLL 6 M 10X1
8	LL	M12x1	MLL 8 M 12X1
6	L	M12x1,5	ML 6 M 12X1.5
8	L	M14x1,5	ML 8 M 14X1.5
10	L	M16x1,5	ML 10 M 16X1.5
12	L	M18x1,5	ML 12 M 18X1.5
15	L	M22x1,5	ML 15 M 22X1.5
18	L	M26x1,5	ML 18 M 26X1.5
22	L	M30x2	ML 22 M 30X2
28	L	M36x2	ML 28 M 36X2
35	L	M45x2	ML 35 M 45X2
42	L	M52x2	ML 42 M 52X2
6	S	M14x1,5	MS 6 M 14X1.5
8	S	M16x1,5	MS 8 M 16X1.5
10	S	M18x1,5	MS 10 M 18X1.5
12	S	M20x1,5	MS 12 M 20X1.5
14	S	M22x1,5	MS 14 M 22X1.5
16	S	M24x1,5	MS 16 M 24X1.5
20	S	M30x2	MS 20 M 30X2
25	S	M36x2	MS 25 M 36X2
30	S	M42x2	MS 30 M 42X2
38	S	M52x2	MS 38 M 52X2

Racores soldables

Welding fittings
Raccords à souder
Raccordi a saldare

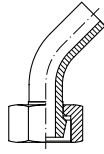


Hembra giratoria 45° prensada métrica - soldable

Metric weldable swivel female 45°

Femelle tournante 45° métrique à souder

Femmina girevole 45° metrica a saldare



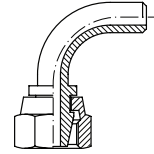
PIPE TUBO	SERIE	THREAD ROSCA	Part n° Referencia
6	L	12X1,5	A10531206
8	L	14x1,5	A10531408
10	L	16X1,5	A10531610
12	L	18X1,5	A10531812
15	L	22X1,5	A10532215
18	L	26X1,5	A10532618
22	L	30X2	A10533022
28	L	36X2	A10533628
35	L	45X2	A10534535
42	L	52X2	A10535242
6	S	14x1,5	A10531406
8	S	16X1,5	A10531608
10	S	18X1,5	A10531810
12	S	20X1,5	A10532012
14	S	22X1,5	A10532214
16	s	24x1,5	A10532416
20	S	30X2	A10533020
25	S	36X2	A10533625
30	S	42X2	A10534230
38	S	52X2	A10535238

Hembra giratoria 90° prensada métrica - soldable

Metric weldable swivel female 90°

Femelle tournante 90° métrique à souder

Femmina girevole 90° metrica a saldare



PIPE TUBO	SERIE	THREAD ROSCA	Part n° Referencia
6	L	12X1,5	A10521206
8	L	14X1,5	A10521408
10	L	16X1,5	A10521610
12	L	18X1,5	A10521812
15	L	22X1,5	A10522215
18	L	26X1,5	A10522618
22	L	30X2	A10523022
28	L	36X2	A10523628
35	L	45X2	A10524535
42	L	52X2	A10525242
6	S	14X1,5	A10521406
8	S	16X1,5	A10521608
10	S	18X1,5	A10521810
12	S	20X1,5	A10522012
14	S	22X1,5	A10522214
16	S	24X1,5	A10522416
20	S	30X2	A10523020
25	S	36X2	A10523625
30	S	42X2	A10524230
38	S	52X2	A10525238

Racores soldables

Welding fittings
Raccords à souder
Raccordi a saldare

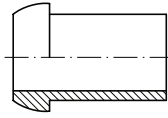


Cono ajuste sin guía

Welding nipple without guide

Collet à souder sans guide

Ogiva a saldare BSP



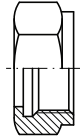
DN	THREAD ROSCA	Part n° Referencia
1/4"	1/4" BSP	A127304
3/8"	3/8" BSP	A127306
1/2"	1/2" BSP	A127308
3/4"	3/4" BSP	A127312
1"	1" BSP	A127316
1"1/4	1"1/4 BSP	A127320
1"1/2	1"1/2 BSP	A127324
2"	2" BSP	A127332

Tuerca para cono ajuste 60° BSP

BSP nut for welding nipple 60° cone

Écrou BSP pour collet à souder bw (60°)

Dado BSP per nipple a saldare 60°



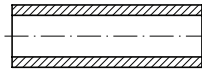
THREAD ROSCA	Part n° Referencia
1/4" BSP	A127004
3/8" BSP	A127006
1/2" BSP	A127008
3/4" BSP	A127012
1" BSP	A127016
1"1/4 BSP	A127020
1"1/2 BSP	A127024
2" BSP	A127032

Espiga lisa métrica recta

Metric standpipe

Embout lisse métrique droit

Estremità tubolare diritta Metrica



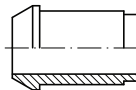
Ø OUTER Ø EXT.	Ø INNER Ø INT.	Part n° Referencia
10	7	KL0010
12	9	KL0012
14	10	KL0014
15	12	KL0015
16	12	KL0016
18	14	KL0018
20	14	KL0020
22	18	KL0022

Cono ajuste BSP 60° con guía >2"

Welding nipple with 60° cone for BSP nut with guide >2"

Collet à souder BSP cone 60° avec guide >2"

Ogiva a saldare cono 60° con guida per dado BSP >2"



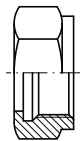
DN	THREAD ROSCA	Part n° Referencia
2"1/2	2"1/2 BSP	Z127840
3"	3" BSP	Z127848
4"	4" BSP	Z127864

Tuercas BSP Microfundido AISI-316 >2"

Micro-casting BSP nuts AISI-316 >2"

Écrous BSP en acier moulé AISI-316 >2"

Dadi BSP microfusi AISI-316 >2"



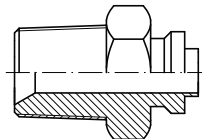
THREAD ROSCA	Part n° Referencia
2"1/2 BSP	Z127040
3" BSP	Z127048
4" BSP	Z127064

Macho BSPT soldar microfundido AISI-316 >2"

Micro-casting BSPT welding male AISI-316 >2"

Mâle BSPT à souder en acier moulé AISI-316 >2"

Maschio BSPT a saldare microfuso AISI-316 >2"



DN	THREAD ROSCA	Part n° Referencia
2"1/2	2"1/2 BSPT	ZM103240
3"	3" BSPT	ZM103248
4"	4" BSPT	ZM103264

Bridas soldables

Welding flanges
Brides à souder
Flange a saldare

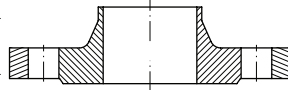


Brida fija DIN 2633 PN 10/16

Fixed forged flange DIN 2633 PN 10/16

Bride fixe avec collerette DIN 2633 PN 10/16 à souder

Flangia fissa a saldare DIN 2633 PN 10/16



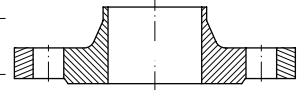
DN	Part n° Referencia
3/8"	BPN16263306
1/2"	BPN16263308
3/4"	BPN16263312
1"	BPN16263316
1"1/4	BPN16263320
1"1/2	BPN16263324
2"	BPN16263332
2"1/2	BPN16263340
3"	BPN16263348
4"	BPN16263364

Brida fija DIN 2635 PN 40

Fixed forged flange DIN 2635 PN 40

Bride fixe avec collerette DIN 2635 PN 40 à souder

Flangia fissa a saldare DIN 2635 PN 40



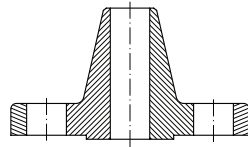
DN	Part n° Referencia
3/8"	BPN40263506
1/2"	BPN40263508
3/4"	BPN40263512
1"	BPN40263516
1"1/4	BPN40263520
1"1/2	BPN40263524
2"	BPN40263532
2"1/2	BPN40263540
3"	BPN40263548
4"	BPN40263564

Brida ANSI-ASA Neck 150 LBS

Flange ANSI-ASA w. Neck 150 LBS

Bride ANSI-ASA w. Neck 150 LBS

Flangia ANSI-ASA 150 LBS



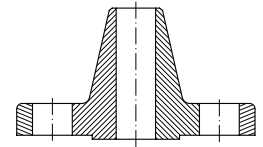
DN	Part n° Referencia
1/2"	BANSAWN15008
3/4"	BANSAWN15012
1"	BANSAWN15016
1"1/4	BANSAWN15020
1"1/2	BANSAWN15024
2"	BANSAWN15032
2"1/2	BANSAWN15040
3"	BANSAWN15048
4"	BANSAWN15064

Brida ANSI-ASA Neck 300 LBS

Flange ANSI-ASA w. Neck 300 LBS

Bride ANSI-ASA w. Neck 300 LBS

Flangia ANSI-ASA Neck 300 LBS



DN	Part n° Referencia
1/2"	BANSAWN30008
3/4"	BANSAWN30012
1"	BANSAWN30016
1"1/4	BANSAWN30020
1"1/2	BANSAWN30024
2"	BANSAWN30032
2"1/2	BANSAWN30040
3"	BANSAWN30048
4"	BANSAWN30064

Bridas soldables

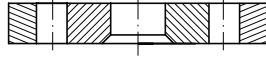
Welding flanges
Brides à souder
Flange a saldare



Brida loca DIN 2642 PN 10/16

Swivel forged flange DIN 2642 PN 10/16

Bride plate tournante DIN 2642 PN 10/16 à souder



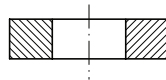
Flangia girevole a saldare DIN 2642 PN 10/16

DN	Part n° Referencia
3/8"	BPN10264206
1/2"	BPN10264208
3/4"	BPN10264212
1"	BPN10264216
1"1/4	BPN10264220
1"1/2	BPN10264224
2"	BPN10264232
2"1/2	BPN10264240
3"	BPN10264248
4"	BPN10264264

Aro para brida DIN 2642

Ring for flange DIN 2642

Collet épais pour bride DIN 2642



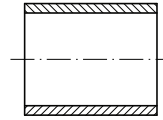
Anello per flangia DIN 2642

DN	Part n° Referencia
3/8"	ABARO264206
1/2"	ABARO264208
3/4"	ABARO264212
1"	ABARO264216
1"1/4	ABARO264220
1"1/2	ABARO264224
2"	ABARO264232
2"1/2	ABARO264240
3"	ABARO264248
4"	ABARO264264

Tubo soldar brida ANSI-DIN

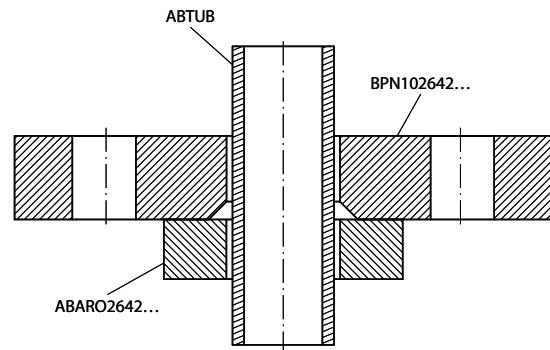
Tube for welding flanges ANSI-DIN

Tube à souder brides ANSI-DIN



Tubo per flangia a saldare ANSI-DIN

DN	Part n° Referencia
3/8"	ABTUB006
1/2"	ABTUB008
3/4"	ABTUB012
1"	ABTUB016
1"1/4	ABTUB020
1"1/2	ABTUB024
2"	ABTUB032
2"1/2	ABTUB040
3"	ABTUB048
4"	ABTUB064



Bridas soldables

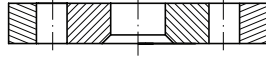
Welding flanges
Brides à souder
Flange a saldare



Brida loca DIN 2656 PN 40

Swivel forged flange DIN 2656 PN 40

Bride plate tournante DIN 2656 PN 40 à souder



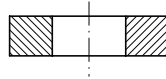
Flangia girevole a saldare DIN 2656 PN 40

DN	Part n° Referencia
3/8"	BPN40265606
1/2"	BPN40265608
3/4"	BPN40265612
1"	BPN40265616
1"1/4	BPN40265620
1"1/2	BPN40265624
2"	BPN40265632
2"1/2	BPN40265640
3"	BPN40265648
4"	BPN40265664

Aro para brida DIN 2656

Ring for flange DIN 2656

Collet épais pour bride DIN 2656



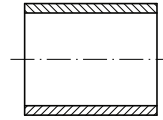
Anello per flangia DIN 2656

DN	Part n° Referencia
3/8"	ABARO265606
1/2"	ABARO265608
3/4"	ABARO265612
1"	ABARO265616
1"1/4	ABARO265620
1"1/2	ABARO265624
2"	ABARO265632
2"1/2	ABARO265640
3"	ABARO265648

Tubo soldar brida ANSI-DIN

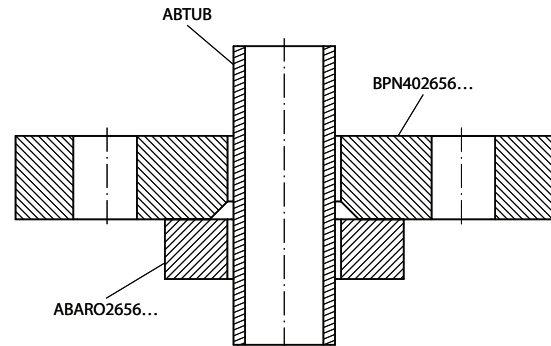
Tube for welding flanges ANSI-DIN

Tube à souder brides ANSI-DIN



Tubo per flangia a saldare ANSI-DIN

DN	Part n° Referencia
3/8"	ABTUB006
1/2"	ABTUB008
3/4"	ABTUB012
1"	ABTUB016
1"1/4	ABTUB020
1"1/2	ABTUB024
2"	ABTUB032
2"1/2	ABTUB040
3"	ABTUB048
4"	ABTUB064



Bridas soldables

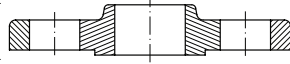
Welding flanges
Brides à souder
Flange a saldare



Brida loca ANSI-ASA 150 LBS

Swivel flange ANSI-ASA 150 LBS

Bride tourn. ANSI-ASA 150 LBS



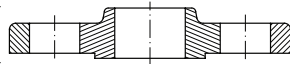
Flangia ANSI-ASA 150 LBS

DN	Part n° Referencia
1/2"	BANSASO15008
3/4"	BANSASO15012
1"	BANSASO15016
1"1/4	BANSASO15020
1"1/2	BANSASO15024
2"	BANSASO15032
2"1/2	BANSASO15040
3"	BANSASO15048
4"	BANSASO15064

Brida loca ANSI-ASA 300 LBS

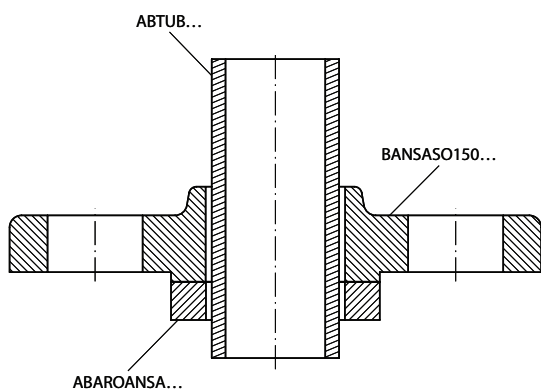
Swivel flange ANSI-ASA 300 LBS

Bride tourn. ANSI-ASA 300 LBS



Flangia ANSI-ASA 300 LBS

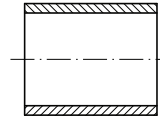
DN	Part n° Referencia
1/2"	BANSASO30008
3/4"	BANSASO30012
1"	BANSASO30016
1"1/4	BANSASO30020
1"1/2	BANSASO30024
2"	BANSASO30032
2"1/2	BANSASO30040
3"	BANSASO30048
4"	BANSASO30064



Tubo soldar brida ANSI-DIN

Tube for welding flanges ANSI-DIN

Tube à souder brides ANSI-DIN



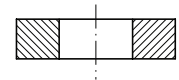
Tube per flangia a saldare ANSI-DIN

DN	Part n° Referencia
3/8"	ABTUB006
1/2"	ABTUB008
3/4"	ABTUB012
1"	ABTUB016
1"1/4	ABTUB020
1"1/2	ABTUB024
2"	ABTUB032
2"1/2	ABTUB040
3"	ABTUB048
4"	ABTUB064

Aro para brida ANSI-ASA 150/300 LBS

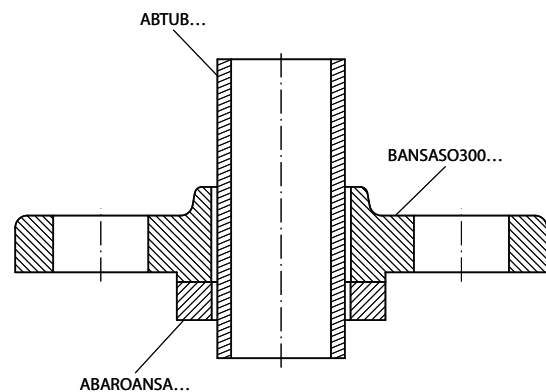
Ring for welding flanges ANSI-ASA 150/300 LBS

Collet épais pour bride ANSI-ASA 150/300 LBS



Anello per flangia ANSI-ASA 150/300 LBS

DN	Part n° Referencia
1/2"	ABAROANSA08
3/4"	ABAROANSA12
1"	ABAROANSA16
1"1/4	ABAROANSA20
1"1/2	ABAROANSA24
2"	ABAROANSA32
2"1/2	ABAROANSA40
3"	ABAROANSA48
4"	ABAROANSA64



Mangueras baja presión

Low pressure hoses
Tuyaux basse pression
Tubi bassa pressione



- Mangueras de caucho sintético / Synthetic rubber hoses (diesel oil) / Tuyaux de caoutchouc synthétique (gas-oil) / Tubi di caucciú sintético (diesel) | 56



M100



M110

Racores baja presión

Low pressure fittings
Raccords basse pression
Raccordi bassa pressione

- Casquillos (campanillas) / Sleeves / Jupes basse pression / Boccole | 57



A5010



ALCA

- Conexiones BSP / BSP Fittings / Embouts BSP basse pression / Raccordi BSP | 57



D5042



D5040



D5052



D5050



D5030



D5091

- Conexiones Métricas / Metric fittings / Embouts Métriques basse pression / Raccordi Metrici | 59



D5062



D5082



D5080



D5060



D5070



D5090



D5085



D5020

Mangueras baja presión

Low pressure hoses
Tuyaux basse pression
Tubi bassa pressione



Manguera de caucho sintético con una malla de acero galvanizado (gasoil)

Synthetic rubber hose with a galvanized steel braided (gasoil)

Tuyau de caoutchouc synthétique avec une tresse d'acier galvanisé (gasoil)

Tubo di caucciú sintético con una treccia di acciaio galvanizzato (gasolio)



Ø INNER Ø INT.	Part nº Referencia
5	M10005
6	M10006
7	M10007
8	M10008
9	M10009
12	M10012
14	M10014
15	M10015
18	M10018
20	M10020
22	M10022
26	M10025
30	M10030
40	M10040
50	M10050

Manguera de caucho sintético con una malla textil de alta tenacidad (gasoil y gasolina)

Synthetic rubber hose with a textile braided high toughness (gasoil and gasolina)

Tuyau de caoutchouc synthétique avec une tresse textile d'haute tenacité (gasoil et essence)

Tubo di caucciú sintético con una treccia tessile ad alta resistenza (gasolio e benzina)



Ø INNER Ø INT.	Part nº Referencia
4	M11004
5	M11005
6	M11006
7	M11007
8	M11008
9	M11009
12	M11012

Máquina prensar baja presión | Low pressure crimping machine | Presse basse pression | Macchina pressatubi bassa pressione

PBPH25PI



PBPH25



Mordazas incluidas | Included dies | Mors inclus | Morsetti inclusi
Ø10-13-16 mm.

Ø máx. | Ø max. | Ø max. | Ø massimo

25 mm. 25 mm.

Apertura | Opening | Overture | Apertura

+21 mm. +21 mm.

Peso | Weight | Poids | Peso

25 kg. 12 kg.

Dimensiones | Dimensions | Dimensions | Dimensioni

500 x 180 x 310 mm.

Alimentación neumática | Pneumatic input |

Alimentation Pneumatique | Alimentazione pneumatica

Máx. 7 bar.

Mordazas incluidas | Included dies | Mors inclus | Morsetti inclusi
Ø10-13-16 mm.

Ø máx. | Ø max. | Ø max. | Ø massimo

Apertura | Opening | Overture | Apertura

Peso | Weight | Poids | Peso

Dimensiones | Dimensions | Dimensions | Dimensioni

500 x 180 x 310 mm.

Racores baja presión

Low pressure fittings
Raccords basse pression
Raccordi bassa pressione



Campana acero para manguera de baja presión

Sleeves for low pressure hose (steel)

Jupe acier doux malléable pour tuyau basse pression

Boccola in acciaio sottile per tubo bassa pressione



Ø OUTER Ø EXT.	Ø INNER Ø INT.	Part n° Referencia
11,6	10,5	A50101050000
13,7	12,4	A50101200000
14,7	13,5	A50101350000
15,6	14,5	A50101450000
16,5	15,5	A50101550000
18,8	17,3	A50101700000
19,5	18,5	A50101850000
22,9	20,5	A50102050000
23,9	22,5	A50102250000
26,2	24,5	A50102450000
28	26,4	A50102600000
30	28	A50102800000
32,2	30	A50103000000
35,5	33,5	A50103300000
38,2	36	A50103600000
45,2	42,2	A50104200000
60,8	56	A50105600000
65,5	61	A50106100000
70,3	66,5	A50106650000
76,7	71	A50107100000

Campana aluminio para racor industrial - cierre 45°

Crimping ferrule 45° closure (aluminium)

Jupe aluminium pour raccord industriel - fermeture 45°

Boccola alluminio per raccordo industriale - chiusura 45°



Ø INNER Ø INT.	Part n° Referencia
11	ALCA011000
12.9	ALCA012900
13.4	ALCA013400
14.5	ALCA014500
15.5	ALCA015500
17.5	ALCA017500
18.5	ALCA018500
20.5	ALCA020500
21.5	ALCA021500
24.5	ALCA024500
26.5	ALCA026500
28.5	ALCA028500
30	ALCA030000
33	ALCA033000
36	ALCA036000
39	ALCA039000
46	ALCA046000
43	ALCA043000
48	ALCA048000
50	ALCA050000
54	ALCA054000
56.5	ALCA056500
63	ALCA063000
67	ALCA067000
84	ALCA083000
98	ALCA099000
123	ALCA121000

Macho BSP rosca cilíndrica asiento cónico 60°

BSP Cylindrical male low pressure 60° cone

Embout mâle fixe BSP cône 60° basse pression

Maschio BSP cilindrico sede conica 60° bassa pressione



PIPE TUBO	THREAD ROSCA	Part n° Referencia
5-6	1/4"	D50420405000
7-8	1/4"	D50420407000
7-8	3/8"	D50420607000
9-10	3/8"	D50420609000
12-13	3/8"	D50420612000
12-13	1/2"	D50420812000
15-16	1/2"	D50420815000
15-16	3/4"	D50421216000
19-20	3/4"	D50421220000
19-20	1"	D50421620000
25	1"	D50421625000
30	1"1/4	D50422030000
40	1"1/2	D50422440000
50	2"	D50423250000

Macho BSP rosca cilíndrica asiento plano

Low pressure BSP cylindrical male flat seat

Embout mâle gaz fond plat basse pression

Maschio BSP cilindrico sede piana bassa pressione



PIPE TUBO	THREAD ROSCA	Part n° Referencia
5-6	1/8"	D50400205000
5-6	1/4"	D50400405000
7-8	1/4"	D50400407000
7-8	3/8"	D50400607000
9-10	3/8"	D50400609000
12-13	1/2"	D50400812000
15-16	1/2"	D50400815000
15-16	3/4"	D50401216000
19-20	3/4"	D50401220000
19-20	1"	D50401620000
25	1"	D50401625000
30	1"1/4	D50402030000
40	1"1/2	D50402440000
50	2"	D50403250000

Racores baja presión

Low pressure fittings
Raccords basse pression
Raccordi bassa pressione



Boquilla asiento cónico 60° (BSP) baja presión

BSP Nipple 60° cone low pressure

Nipple embout femelle BSP 60° basse pression

Inserto cono 60° BSP bassa pressione



DN	NUT TUERCA	Part n° Referencia
5-6	1/4"	D50520405000
7-8	1/4"	D50520407000
7-8	3/8"	D50520607000
9-10	3/8"	D50520609000
12-13	1/2"	D50520812000
15-16	1/2"	D50520815000
15-16	3/4"	D50521216000
19-20	3/4"	D50521220000
19-20	1"	D50521620000
25	1"	D50521625000
30	1"1/4	D50522030000
40	1"1/2	D50522440000
50	2"	D50523250000

Boquilla asiento plano (BSP) baja presión

BSP Nipple flat seat

Nipple embout femelle fond plat BSP basse pression

Inserto faccia piana BSP bassa pressione



PIPE TUBO	NUT TUERCA	Part n° Referencia
5-6	1/4"	D50500405000
7-8	1/4"	D50500407000
9-10	3/8"	D50500609000
12-13	1/2"	D50500812000
15-16	1/2"	D50500815000
15-16	3/4"	D50501216000
19-20	3/4"	D50501220000
19-20	1"	D50501620000
25	1"	D50501625000
30	1"1/4	D50502030000
40	1"1/2	D50502440000
50	2"	D50503250000

Tuerca BSP

BSP Nut

Ecrou BSP

Dado BSP



THREAD ROSCA	Part n° Referencia
1/4" BSP	D50300400000
3/8" BSP	D50300600000
1/2" BSP	D50300800000
3/4" BSP	D50301200000
1" BSP	D50301600000
1"1/4 BSP	D50302000000
1"1/2 BSP	D50302400000
2" BSP	D50303200000

Codo 90° baja gas cono 60°

90° BSP Swivel female 60° cone low pressure

Embout femelle 90° gaz cyl BSP 60° basse pression

Femmina a 90° sede 60° bassa pressione



PIPE TUBO	THREAD ROSCA	Part n° Referencia
5-6	1/4"	D50910405000
7-8	1/4"	D50910407000
9-10	3/8"	D50910609000
12-13	1/2"	D50910812000
15-16	1/2"	D50910815000
15-16	3/4"	D50911216000
19-20	3/4"	D50911220000
19-20	1"	D50911620000
25	1"	D50911625000
30	1"1/4	D50912030000

Racores baja presión

Low pressure fittings
Raccords basse pression
Raccordi bassa pressione



Macho rosca métrica asiento cónico 60° baja presión

Metric cylindrical male 60° cone

Embout mâle DIN métrique cône 60° basse pression

Maschio Metrico sede conica 60° bassa pressione



PIPE TUBO	THREAD ROSCA	Part nº Referencia
5-6	10X1	D50621005000
7-8	12X1,5	D50621207000
9-10	14X1,5	D50621409000
9-10	16X1,5	D50621609000
12-13	16X1,5	D50621612000
9-10	18X1,5	D50621810000
12-13	22X1,5	D50622212000
15-16	22X1,5	D50622215000
12-13	26X1,5	D50622612000
15-16	26X1,5	D50622615000

Macho rosca métrica asiento plano baja presión

Metric cyl male flat seat low pressure

Embout mâle métrique fond plat basse pression

Maschio Metrico sede piana bassa pressione



PIPE TUBO	THREAD ROSCA	Part nº Referencia
5-6	10X1	D50601005000
7-8	12X1,5	D50601207000
9-10	14X1,5	D50601409000
9-10	16X1,5	D50601609000
12-13	16X1,5	D50601612000
9-10	18X1,5	D50601810000
12-13	22X1,5	D50602212000
15-16	22X1,5	D50602215000
12-13	26X1,5	D50602612000
15-16	26X1,5	D50602615000

Boquilla asiento cónico 60° (Métrica) baja presión

Metric nipple 60° cone low pressure

Nipple pour embout femelle DIN métrique cône 60° basse pression

Inserto cono 60° Metrico bassa pressione



PIPE TUBO	NUT TUERCA	Part nº Referencia
5-6	10X1	D50821005000
7-8	12X1,5	D50821207000
9-10	14X1,5	D50821409000
8-9	16X1,5	D50821609000
9-10	18X1,5	D50821810000
12-13	22X1,5	D50822212000
15-16	22X1,5	D50822215000
12-13	26X1,5	D50822612000
15-16	26X1,5	D50822615000

Tuerca Métrica

Metric nut

Écrou métrique

Dado Metrico



THREAD ROSCA	Part nº Referencia
10X1	D50701000000
12X1,5	D50701200000
14X1,5	D50701400000
16X1,5	D50701600000
18X1,5	D50701800000
22X1,5	D50702200000
26X1,5	D50702600000

Boquilla asiento plano (Métrica) baja presión

Metric nipple flat seat low pressure

Nipple pour embout femelle métrique fond plat basse pression

Inserto faccia piana bassa pressione



PIPE TUBO	NUT TUERCA	Part nº Referencia
5-6	10X1	D50801005000
7-8	12X1,5	D50801207000
9-10	14X1,5	D50801409000
9-10	16X1,5	D50801609000
9-10	18X1,5	D50801810000
12-13	22X1,5	D50802212000
15-16	22X1,5	D50802215000
12-13	26X1,5	D50802612000
15-16	26X1,5	D50802615000

Boquilla en codo 90° asiento cónico 60° (métrico) baja presión

Nipple in 90° metric swivel female tapered seat low pressure 60°

Nipple en embout femelle 90° DIN métrique cône 60° basse pression

Femmina a 90° Metrica sede conica 60°



PIPE TUBO	THREAD ROSCA	Part nº Referencia
5-6	10X1	D50901006000
7-8	12X1,5	D50901207000
9-10	14X1,5	D50901409000
9-10	16X1,5	D50901609000

Racores baja presión

Low pressure fittings
Raccords basse pression
Raccordi bassa pressione



Espiga lisa métrica baja presión

Metric standpipe low pressure

Embout lisse métrique basse pression



Estremitá tubolare Metrica bassa pressione

PIPE TUBO		Part nº Referencia
5-6	4	D50850405000
5-6	6	D50850606000
5-6	8	D50850806000
7-8	8	D50850808000
7-8	10	D50851008000
9-10	10	D50851010000
12-13	12	D50851212000
15,5	15	D50851515000
15-16	18	D50851815000

Orientable métrico baja presión

Low pressure metric banjo

Embout banjo métrique basse pression



Raccordo ad occhio Metrico bassa pressione

PIPE TUBO	Ø	Part nº Referencia
5-6	8	D50200805
7-8	8	D50200807
5-6	10	D50201005
7-8	10	D50201007
9-10	10	D50201009
5-6	12	D50201205
7-8	12	D50201207
9-10	12	D50201209
5-6	14	D50201405
7-8	14	D50201407
9-10	14	D50201409

Manguera aire acondicionado

Air conditioning hose

Tuyau Freon

Tube Freon



■ Mangueras Freón / Air conditioning hose / Tuyau Freon / Tubo Freon

| 64



M5200



MSB25

Racores aire acondicionado

Air conditioning fittings
Raccords climatisation
Raccordi aria condizionata



- Rotalock sin válvula / Rotalock without valve / Raccords Rotalock sans vanne / Raccordi Rotalock senza valvola | 65



- Rotalock con válvula / Rotalock with valve / Raccords Rotalock avec vanne / Raccordi Rotalock con valvola | 65



- Racores de unión / Couplings / Raccord union / Raccordi di unione | 65



- Hembras con junta tórica sin válvula / Swivel female with green joint / Femelles tournantes avec joint vert sans vanne / Femmine con o'ring senza valvola | 66



- Hembras con junta tórica con válvula / Swivel female with green joint with valve / Femelles tournantes avec joint vert et avec vanne / Femmine con o'ring e valvola | 66



- Machos con junta tórica / Males with green joint / Mâles avec joint vert / Maschi con o'ring | 67



- Conexiones rosca SAE / Swivel females SAE / Femelles tournantes SAE / Raccordi SAE | 67



- Conexiones con válvula para Freón 12 / Fittings with valve for air conditioning 12 / Embouts climatisation pour Freón 12 avec vanne / Raccordi con valvola per Freon 12 | 68



Racores aire acondicionado

Air conditioning fittings
Raccords climatisation
Raccordi aria condizionata



- Juntas tóricas y racores recuperables / Joints and reusable fittings / Joints toriques et raccords récupérables / O'ring e raccordi recuperabili | 68



*FREON



CRF

Manguera aire acondicionado

Air conditioning hose

Tuyau Freon

Tube Freon



Freón DAYCO

Air conditioning DAYCO

Tuyaux Freon DAYCO

Freon DAYCO



DN		Part nº Referencia
5/16"	8	M520006
13/32"	10	M520008
1/2"	13	M520010
5/8"	16	M520012

Freón TrΔle

Air conditioning TrΔle

Tuyaux Freon TrΔle

Freon TrΔle



DN		Part nº Referencia
5/16"	8	MSB2506
13/32"	10	MSB2508
1/2"	12	MSB2510
5/8"	16	MSB2512

Mangueras Freón Barrier N (polivalente) Freón 134, 12...

Air Conditioning Barrier N Hose Freon 134, 12...



SAE J51
SAE J2064



-30 / 95 °C

- Está compuesta por Nitrilo, Nylon y Neopreno. Cubierta exterior de EPDM resistente al calor, abrasión y al exterior.

Tube: Nitrile, Nylon and Neoprene. Outer cover of EPDM, heat, abrasion and ozone resistant.

- Refrigerantes / refrigerants
HFC-134a / CFC-12

Prensa manual

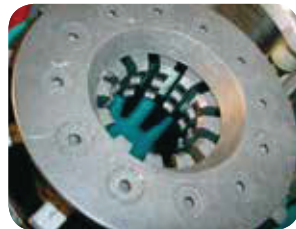
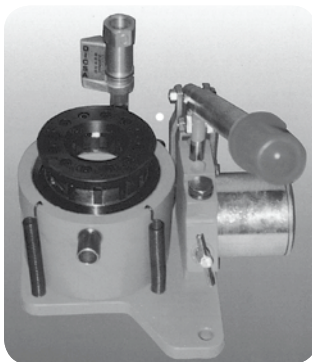
Manual crimping machine

Prensas eléctricas

Electric crimping machine

Prensa Freón. Ref. V001040 (sin juegos de mordazas)

Air conditioning hose crimping machine (without clamps)



Disponemos de garras de freón para las prensas
SE 25 - PE 25 / 28 / 32 / 38 / 50 / 58 / 4-50 - PE 180 - PES 50...
We have air conditioning clamps for the following machines
SE 25 - PE 25 / 28 / 32 / 38 / 50 / 58 / 4-50 - PE 180 - PES 50...

Racores aire acondicionado

Air conditioning fittings
Raccords climatisation
Raccordi aria condizionata



Hembra recta con junta Rotalock

Straight female with Rotalock joint

Femelle climatisation droite Rotalock avec raccord tube "o" compresseur



Femmina diritta con guarnizione Rotalock

DN	THREAD ROSCA	Part n° Referencia
13/32"	1" 14h UNS	FXR 1108
1/2"	1" 14h UNS	FXR 1110
5/8"	1" 14h UNS	FXR 1112

Hembra 90° con junta Rotalock

90° Female with Rotalock joint

Femelle climatisation 90° Rotalock avec raccord tube 90° "o" compresseur



Femmina a 90° con guarnizione Rotalock

DN	THREAD ROSCA	Part n° Referencia
13/32"	1" 14h UNS	FX90 1108
1/2"	1" 14h UNS	FX90 1110
5/8"	1" 14h UNS	FX90 1112

Hembra recta con junta Rotalock y válvula 134

Straight female with Rotalock joint and 134 valve

Femelle droite Rotalock avec joint et vanne pour 134



Femmina diritta con guarnizione Rotalock e valvola 134

DN	THREAD ROSCA	Part n° Referencia
13/32"	1" 14h UNS	134 FXRV 1108
1/2"	1" 14h UNS	134 FXRV 1110
5/8"	1" 14h UNS	134 FXRV 1112

Hembra 45° con junta Rotalock y válvula 134

45° Female with Rotalock joint and 134 valve

Femelle 45° Rotalock avec joint et vanne pour 134



Femmina a 45° con guarnizione Rotalock e valvola 134

DN	THREAD ROSCA	Part n° Referencia
13/32"	1" 14h UNS	134 FX45V 1108
1/2"	1" 14h UNS	134 FX45V 1110

Racor de unión con válvula 134

134 valve coupling

Raccord d'union climatisation avec vanne pour splicer vanne pour 134



Raccordo di unione tubi con valvola 134

DN	Part n° Referencia
5/16"	134 URTV 0006
13/32"	134 URTV 0008
1/2"	134 URTV 0010
5/8"	134 URTV 0012

Hembra 45° con junta Rotalock

45° Female with Rotalock joint

Femelle climatisation 45° Rotalock avec raccord tube 45° "o" compresseur



Femmina a 45° con guarnizione Rotalock

DN	THREAD ROSCA	Part n° Referencia
13/32"	1" 14h UNS	FX45 1108
1/2"	1" 14h UNS	FX45 1110
5/8"	1" 14h UNS	FX45 1112

Hembra especial 90° con junta Rotalock

90° Special female with Rotalock joint

Femelle climatisation spéciale 90° Rotalock avec raccord tube 90° spécial "o" compresseur



Femmina a 90° speciale con guarnizione Rotalock

DN	THREAD ROSCA	Part n° Referencia
13/32"	1" 14h UNS	FXA90 1108
1/2"	1" 14h UNS	FXA90 1110

Hembra 90° con junta Rotalock y válvula 134

90° Female with Rotalock joint and 134 valve

Femelle 90° Rotalock avec joint et vanne pour 134



Femmina a 90° con guarnizione Rotalock e valvola 134

DN	THREAD ROSCA	Part n° Referencia
13/32"	1" 14h UNS	134 FX90V 1108
1/2"	1" 14h UNS	134 FX90V 1110
5/8"	1" 14h UNS	134 FX90V 1112

Hembra especial 90° con junta Rotalock y válvula 134

90° special Female with Rotalock joint and 134 valve

Femelle climatisation spéciale 90° Rotalock avec joint et vanne pour 134



Femmina a 90° speciale con guarnizione Rotalock e valvola 134

DN	THREAD ROSCA	Part n° Referencia
13/32"	1" 14h UNS	134 FXAV90 1108
1/2"	1" 14h UNS	134 FXAV90 1110

Racor de unión

Hose-hose coupling

Raccord d'union climatisation splicer



Raccordo di unione tubo-tubo

DN	Part n° Referencia
5/16"	URT 0006
13/32"	URT 0008
1/2"	URT 0010
5/8"	URT 0012

Racores aire acondicionado

Air conditioning fittings
Raccords climatisation
Raccordi aria condizionata



Hembra giratoria recta con junta verde

Straight swivel female with green joint

Femelle tournante avec joint vert

Femmina diritta con o'ring verde



DN	THREAD ROSCA	Part n° Referencia
5/16"	5/8" 18h UNF	FOR 0606
13/32"	3/4" 16h UNF	FOR 0808
1/2"	7/8" 14h UNF	FOR 1010
5/8"	7/8" 14h UNF	FOR 1012
5/8"	1"1/16 12h UNF	FOR 1212

Hembra giratoria 90° con junta verde

90° swivel female with green joint

Femelle tournante 90° avec joint vert

Femmina a 90° con o'ring verde



DN	THREAD ROSCA	Part n° Referencia
5/16"	5/8" 18h UNF	FO90 0606
13/32"	3/4" 16h UNF	FO90 0808
1/2"	7/8" 14h UNF	FO90 1010
5/8"	7/8" 14h UNF	FO90 1012
5/8"	1"1/16 12h UNF	FO90 1212

Hembra giratoria 45° con junta verde

45° swivel female with green joint

Femelle tournante 45° avec joint vert

Femmina a 45° con o'ring verde



DN	THREAD ROSCA	Part n° Referencia
5/16"	5/8" 18h UNF	FO45 0606
13/32"	3/4" 16h UNF	FO45 0808
1/2"	7/8" 14h UNF	FO45 1010
5/8"	7/8" 14h UNF	FO45 1012
5/8"	1"1/16 12h UNF	FO45 1212

Hembra giratoria recta con válvula

Straight swivel female with green joint and valve

Femelle tournante avec joint vert et vanne pour 134

Femmina diritta con o'ring verde e valvola 134



DN	THREAD ROSCA	Part n° Referencia
5/16"	5/8" 18h UNF	FORV 0606
13/32"	3/4" 16h UNF	FORV 0808
1/2"	7/8" 14h UNF	FORV 1010
5/8"	7/8" 14h UNF	FORV 1012
5/8"	1"1/16 12h UNF	FORV 1212

Hembra giratoria 45° con válvula

45° Swivel female with green joint and valve

Femelle tournante 45° avec joint vert et vanne pour 134

Femmina a 45° con o'ring verde e valvola 134



DN	THREAD ROSCA	Part n° Referencia
5/16"	5/8" 18h UNF	FO45V 0606
13/32"	3/4" 16h UNF	FO45V 0808
1/2"	7/8" 14h UNF	FO45V 1010
5/8"	7/8" 14h UNF	FO45V 1012
5/8"	1"1/16 12h UNF	FO45V 1212

Hembra giratoria 90° con válvula

90° Swivel female with green joint and valve

Femelle tournante 90° avec joint vert et vanne pour 134

Femmina a 90° con o'ring verde e valvola 134



DN	THREAD ROSCA	Part n° Referencia
5/16"	5/8" 18h UNF	FO90V 0606
13/32"	3/4" 16h UNF	FO90V 0808
1/2"	7/8" 14h UNF	FO90V 1010
5/8"	7/8" 14h UNF	FO90V 1012
5/8"	1"1/16 12h UNF	FO90V 1212

Racores aire acondicionado

Air conditioning fittings
Raccords climatisation
Raccordi aria condizionata



Macho recto con junta tórica

Straight male with green joint

Mâle tournant avec joint vert



Maschio diritto con o'ring

DN	THREAD ROSCA	Part n° Referencia
5/16"	5/8" 18h UNF	MOR 0606
13/32"	3/4" 18h UNF	MOR 0808
1/2"	7/8" 18h UNF	MOR 1010
5/8"	7/8" 18h UNF	MOR 1012
5/8"	1"1/16 16h UNF	MOR 1212

Macho 90° con junta tórica

90° Male with green joint

Mâle tournant 90° avec joint vert



Maschio a 90° con o'ring

DN	THREAD ROSCA	Part n° Referencia
5/16"	5/8" 18h UNF	MO90 0606
13/32"	3/4" 18h UNF	MO90 0808
1/2"	7/8" 18h UNF	MO90 1010
5/8"	7/8" 18h UNF	MO90 1012
5/8"	1"1/16 16h UNF	MO90 1212

Macho 45° con junta tórica

45° Male with green joint

Mâle tournant 45° avec joint vert



Maschio a 45° con o'ring

DN	THREAD ROSCA	Part n° Referencia
5/16"	5/8" 18h UNF	MO45 0606
13/32"	3/4" 18h UNF	MO45 0808
1/2"	7/8" 18h UNF	MO45 1010
5/8"	7/8" 18h UNF	MO45 1012
5/8"	1"1/16 16h UNF	MO45 1212

Hembra giratoria recta SAE

Straight swivel female SAE

Femelle tournante SAE droite



Femmina diritta SAE

DN	THREAD ROSCA	Part n° Referencia
5/16"	5/8" 18h UNF	FSR 0606
13/32"	3/4" 16h UNF	FSR 0808
1/2"	7/8" 14h UNF	FSR 1010

Codo 45° hembra giratoria SAE

45° Swivel female SAE

Femelle tournante 45° SAE



Femmina a 45° SAE

DN	THREAD ROSCA	Part n° Referencia
5/16"	5/8" 18h UNF	FS45 0606
13/32"	3/4" 16h UNF	FS45 0808
1/2"	7/8" 14h UNF	FS45 1010

Codo 90° hembra giratoria SAE

90° Swivel female SAE

Femelle tournante 90° SAE



Femmina a 90° SAE

DN	THREAD ROSCA	Part n° Referencia
5/16"	5/8" 18h UNF	FS90 0606
13/32"	3/4" 16h UNF	FS90 0808
1/2"	7/8" 14h UNF	FS90 1010

Racores aire acondicionado

Air conditioning fittings
Raccords climatisation
Raccordi aria condizionata



Hembra recta con junta Rotalock y válvula

Straight female with Rotalock joint and valve

Femelle droite Rotalock avec joint et vanne pour R12

Femmina diritta con guarnizione Rotalock e valvola



DN	THREAD ROSCA	Part n° Referencia
13/32"	1" 14h UNS	FXRV 1108
1/2"	1" 14h UNS	FXRV 1110

Hembra especial 90° con junta Rotalock y válvula

90° Special female with Rotalock joint and valve

Femelle spéciale 90° Rotalock avec joint et vanne pour R12

Femmina a 90° speciale con guarnizione Rotalock e valvola



DN	THREAD ROSCA	Part n° Referencia
13/32"	1" 14h UNS	FXAV90 1108
1/2"	1" 14h UNS	FXAV90 1110

Junta tórica para racores Freón 134

Joints for air conditioning 134 fittings

Joint torique spécial pour Freon 134

O'ring per raccordi per Freon 134



DN	Part n° Referencia
5/16"	7.65X1.78 FREON
13/32"	10.82X1.78 FREON
5/8"	14X1.78 FREON
5/8"	18.77X1.78 FREON

Racor de unión con válvula

Union fitting with valve

Raccord union avec vanne pour R14 splicer vanne pour R12

Raccordi de unione con valvola



DN	Part n° Referencia
5/16"	URTV 0006
13/32"	URTV 0008
1/2"	URTV 0010

Hembra 90° con junta Rotalock y válvula

90° Female with Rotalock joint and valve

Femelle 90° Rotalock avec joint et vanne pour R12

Femmina a 90° con guarnizione Rotalock e valvola



DN	THREAD ROSCA	Part n° Referencia
13/32"	1" 14h UNS	FX90V 1108
1/2"	1" 14h UNS	FX90V 1110

Racores recuperables cargadoras

Reusable fittings for loaders

Raccords climatisation récupérables pour chargeurs

Raccordi recuperabili per carico



DN	THREAD ROSCA	DESCRIPTION DESCRIPCIÓN	Part n° Referencia
3/16"	7/16"	90° Swivel female	CRFC900703
3/16"	7/16"	Ferrule	CRFM003
3/16"	7/16"	Swivel female	CRFTL0703

Abrazaderas Serie ligera TrΔle

Clamps for pipe - TrΔle
 Colliers de fixation TrΔle
 Collari Serie leggera TrΔle



■ Completas / Light serie clamp / Colliers de fixation série légère / Collari fissatubo serie leggera

| 73



A40AZ

A40AZPL

A41AZ

A41AZPL

A40AL

A41AL

■ Componentes / Parts / Composants / Accessori

| 75



A C

AL C

A...AL

AML

APIN

AVTE

APS

AVTC

■ Accesorios / Accessories / Accessoires / Accessori

| 76



APAG

AVTA

APT

APA

Abrazaderas Serie doble TrΔle

Clamps double Series - TrΔle

Colliers Serie double TrΔle

Collari Serie doppi TrΔle



■ Completas / Double / Complets / Doppio

| 77



AZCFS

■ Componentes / Parts / Composants / Accessori

| 77



ADPIN



ADVTE



ADPS



ADC

■ Accesorios / Accessories / Accessori / Accessori

| 78



ADPA



ADPAG



ADVTA

Abrazaderas Serie pesada TrΔle

Clamps heavy Series - TrΔle
 Colliers Série lourde TrΔle
 Collari Serie pesante TrΔle



■ Completas / Complete / Complètes / Completo

| 79



AZCPS

■ Componentes / Parts / Accessoires / Accessori

| 80



APINP



APSP



AVTEP



AMPP C



AMS



APAP



APVTA

Accesorios abrazaderas TrΔle

Accessories for clamps - TrΔle

Accessoires colliers TrΔle

Accessori per collari TrΔle



■ Accesorios carril / Accessories for lane / Accessoires pour lane / Accessori per binario

| 82



TC/T5

Abrazaderas Serie ligera TrΔle

Clamps for pipe - TrΔle
Colliers de fixation TrΔle
Collari Serie leggera TrΔle



Abrazadera simple completa, serie ligera

Light series simple clamp

Collier de fixation complet simple, série légère

Collari fissatubo serie leggera singoli



DN	GROUP GRUPO	UNITS PER BAG CANTIDAD / BOLSA	Part n° Referencia
6	1	10	A40AZ06
8	1	10	A40AZ08
10	1	10	A40AZ10
12	1	10	A40AZ12
1/4"	2	10	A40AZ13.2
14	2	10	A40AZ14
15	2	10	A40AZ15
16	2	10	A40AZ16
3/8"	2	10	A40AZ16.7
18	2	10	A40AZ18
19	3	10	A40AZ19
20	3	10	A40AZ20
1/2"	3	10	A40AZ21.3
22	3	10	A40AZ22
25	3	10	A40AZ25
3/4"	4	10	A40AZ26.7
28	4	10	A40AZ28
30	4	10	A40AZ30
32	5	10	A40AZ32
1"	5	10	A40AZ33.3
35	5	10	A40AZ35
38	5	10	A40AZ38
40	5	10	A40AZ40
42	5	10	A40AZ42
1"1/2	6	10	A40AZ48.3
50.8	6	10	A40AZ50.8

Consultar plásticos en poliamida / Polyamide plastics on request / Plastique polyamide sur demande / Plastica polyamide su richiesta

Abrazadera completa, serie ligera reforzada

Light series reinforced clamp

Colliers de fixation simple série légère renforcés

Collare fissatubo rin forzato completo



DN	GROUP GRUPO	UNITS PER BAG CANTIDAD / BOLSA	Part n° Referencia
6	1	10	A41AZ06
8	1	10	A41AZ08
10	1	10	A41AZ10
12	1	10	A41AZ12
1/4"	2	10	A41AZ13.2
14	2	10	A41AZ14
15	2	10	A41AZ15
16	2	10	A41AZ16
3/8"	2	10	A41AZ16.7
18	2	10	A41AZ18
20	3	10	A41AZ20
1/2"	3	10	A41AZ21.3
22	3	10	A41AZ22
25	3	10	A41AZ25
3/4"	4	10	A41AZ26.7
28	4	10	A41AZ28
30	4	10	A41AZ30
1"	5	10	A41AZ33.7
35	5	10	A41AZ35
38	5	10	A41AZ38
40	5	10	A41AZ40
42	5	10	A41AZ42
44.5	6	10	A41AZ44.5
1"1/2	6	10	A41AZ48.3
50.8	6	10	A41AZ50.8

Consultar plásticos en poliamida / Polyamide plastics on request / Plastique polyamide sur demande / Plastica polyamide su richiesta

Abrazadera simple completa, serie ligera, plásticos perfil liso

Light series simple clamp, plastic smooth profile

Collier de fixation complet simple, série légère, plastique profil lisse

Collari fissatubo serie leggera singoli, plastica profil liso



DN	GROUP GRUPO	UNITS PER BAG CANTIDAD / BOLSA	Part n° Referencia
8	1	10	A40AZ08PL
10	1	10	A40AZ10PL
12	1	10	A40AZ12PL
1/4"	2	10	A40AZ13.2PL
15	2	10	A40AZ15PL
3/8"	2	10	A40AZ16.7PL
18	2	10	A40AZ18PL
20	3	10	A40AZ20PL
1/2"	3	10	A40AZ21.3PL
22	3	10	A40AZ22PL
25	3	10	A40AZ25PL
3/4"	4	10	A40AZ26.7PL
28	4	10	A40AZ28PL
30	4	10	A40AZ30PL
1"	5	10	A40AZ33.3PL
35	5	10	A40AZ35PL
38	5	10	A40AZ38PL
42	5	10	A40AZ42PL

Abrazadera completa, serie ligera reforzada, plásticos perfil liso

Light series reinforced clamp, plastic smooth profile

Colliers de fixation simple série légère renforcés, plastique profil lisse

Collare fissatubo rin forzato completo, plastica profil liso



DN	GROUP GRUPO	UNITS PER BAG CANTIDAD / BOLSA	Part n° Referencia
8	1	10	A41AZ08PL
10	1	10	A41AZ10PL
12	1	10	A41AZ12PL
1/4"	2	10	A41AZ13.2PL
15	2	10	A41AZ15PL
3/8"	2	10	A41AZ16.7PL
18	2	10	A41AZ18PL
20	3	10	A41AZ20PL
1/2"	3	10	A41AZ21.3PL
22	3	10	A41AZ22PL
25	3	10	A41AZ25PL
3/4"	4	10	A41AZ26.7PL
28	4	10	A41AZ28PL
30	4	10	A41AZ30PL
1"	5	10	A41AZ33.3PL
35	5	10	A41AZ35PL
38	5	10	A41AZ38PL
42	5	10	A41AZ42PL

Abrazaderas Serie ligera TrΔle

Clamps for pipe - TrΔle
Colliers de fixation TrΔle
Collari Serie leggera TrΔle



Abrazadera simple completa, serie ligera, Aluminio

Complete simple clamp, light series, aluminium

Collier simple complet, série légère, aluminium

Collare fissatubo completo singolo, serie leggera, in Alluminio



GROUP GRUPO	UNITS PER BAG CANTIDAD / BOLSA	Part nº Referencia
1	10	A40AL06
1	10	A40AL08
1	10	A40AL10
1	10	A40AL12
2	10	A40AL13.5
2	10	A40AL14
2	10	A40AL15
2	10	A40AL16
2	10	A40AL17.2
2	10	A40AL18
3	10	A40AL19
3	10	A40AL20
3	10	A40AL21.3
3	10	A40AL22
3	10	A40AL25
4	10	A40AL26.9
4	10	A40AL28
4	10	A40AL30
5	10	A40AL32
5	10	A40AL33.7
5	10	A40AL35
5	10	A40AL38
5	10	A40AL40
5	10	A40AL42
6	10	A40AL48.3
6	10	A40AL50.8

Abrazadera completa, serie ligera reforzada, Aluminio

Complete simple clamp, light series reinforced, aluminium

Collier complet, série légère renforcée, aluminium

Collare fissatubo completo, serie leggera rinforzata, in Alluminio



GROUP GRUPO	UNITS PER BAG CANTIDAD / BOLSA	Part nº Referencia
1	10	A41AL06
1	10	A41AL08
1	10	A41AL10
1	10	A41AL12
2	10	A41AL13.5
2	10	A41AL14
2	10	A41AL15
2	10	A41AL16
2	10	A41AL17.2
2	10	A41AL18
3	10	A41AL19
3	10	A41AL20
3	10	A41AL21.3
3	10	A41AL22
3	10	A41AL25
4	10	A41AL26.9
4	10	A41AL28
4	10	A41AL30
5	10	A41AL32
5	10	A41AL33.7
5	10	A41AL35
5	10	A41AL38
5	10	A41AL40
5	10	A41AL42
6	10	A41AL48.3
6	10	A41AL50.8

PROPIEDADES DE MATERIALES | MATERIAL PROPERTIES

	POLIPROPILENO Polypropilene (PP)	POLIAMIDA Polyamide (PA)	ALUMINIO Aluminium (AL)	ELASTOMEROS TERMOPLASTICOS Thermoplastic elastomer (TPE)
PROPIEDADES MECÁNICAS Mechanical properties				
ENSAYO IZOD (Mellado, 23°C) Izod Impact Strength (Notched, 23°C)	>40 KJ/m ² ISO 180	>5 KJ/m ² ISO 180		
ENSAYO IZOD (Mellado, -30°C) Izod Impact Strength (Notched, -30°C)	>6 KJ/m ² ISO 180	>2 KJ/m ² ISO 180		
MÓDULO DE ELASTICIDAD Modulus of elasticity	1200-1250 N/mm ² ISO 527-2	>2000 N/mm ² ISO 527-2	70.000 N/mm ²	3,6 N/mm ² (MODULUS@100) ASTM D 412
RESISTENCIA A LA TRACCIÓN Tensile strength	>23 N/mm ² ISO 527-2	>60 N/mm ² ISO 527-2	>160 N/mm ² DIN EN 10002	>3,95 N/mm ² ASTM D 412
DUREZA HARDNESS	>80 ISO 2039-2 (Rockwell-R)	>70 ISO 868 (Shore D)	>80 Brinell hardness	>85 ASTM D 2240 (Shore A)
RANGO DE TEMPERATURAS temperature range	-30°C/90°C	-40°C/120°C	Max. 300°C	-40°C/120°C
PROPIEDADES QUÍMICAS Chemical properties				
ÁCIDOS, DISOLVENTES Acids, Solvents	RESISTENTE (según concentración) Conditionally Consistent	RESISTENTE (según concentración) Conditionally Consistent	RESISTENTE (según concentración) Conditionally Consistent	RESISTENTE (según concentración) Conditionally Consistent
HIDROCARBUROS, ACEITES MINERALES Hydrocarbons, Mineral oils	RESISTENTE (según concentración) Conditionally Consistent	RESISTENTE Consistent	RESISTENTE Consistent	RESISTENTE Consistent
ALCOHOL, AGUA DE MAR, OTROS ACEITES Alcohol, Seawater, Other oils	RESISTENTE Consistent	RESISTENTE Consistent	RESISTENTE Consistent	RESISTENTE Consistent

Abrazaderas Serie ligera TrΔle

Clamps for pipe - TrΔle
Colliers de fixation TrΔle
Collari Serie leggera TrΔle



Plásticos polipropileno, serie ligera

Plastics polypropylene simple, light series

Plastique polypropylene, série légère

Plastica polipropilene serie leggera



DN	GROUP GRUPO	Part n° Referencia
6	1	A106C
8	1	A108C
10	1	A110C
12	1	A112C
1/4"	2	A213.2C
14	2	A214C
15	2	A215C
3/8"	2	A216.7C
16	2	A216C
18	2	A218C
19	3	A319C
20	3	A320C
1/2"	3	A321.3C
22	3	A322C
23	3	A323C
25	3	A325C
3/4"	4	A426.7C
28	4	A428C
30	4	A430C
32	5	A532C
1"	5	A533.7C
35	5	A535C
38	5	A538C
40	5	A540C
42	5	A542C
44.5	6	A644.5C
1 1/2"	6	A648.3C
50.8	6	A650.8C

Plásticos perfil liso, serie ligera

Plastics smooth profile, light series

Plastique profil lisse, série légère

Plastica profil liscio, serie leggera



GROUP GRUPO	Part n° Referencia
1	AL108C
1	AL110C
1	AL112C
2	AL213.2C
2	AL215C
2	AL216.7C
2	AL218C
3	AL320C
3	AL321.3C
3	AL322C
3	AL325C
4	AL426.7C
4	AL428C
4	AL430C
5	AL533.3C
5	AL535C
5	AL538C
5	AL542C

Cuerpo abrazadera Aluminio, serie ligera

Aluminium clamp body, light series

Corps collier aluminium, série légère

Corpo collare in Alluminio, serie leggera



GROUP GRUPO	Part n° Referencia
1	A106AL
1	A108AL
1	A110AL
1	A112AL
2	A213.5AL
2	A214AL
2	A215AL
2	A216AL
2	A217.2AL
2	A218AL
3	A319AL
3	A320AL
3	A321.3AL
3	A322AL
3	A325AL
4	A426.9AL
4	A428AL
4	A430AL
5	A532AL
5	A533.7AL
5	A535AL
5	A538AL
5	A540AL
5	A542AL
6	A648.3AL
6	A650.8AL

Plásticos para abrazaderas anti-vibración

Plastic for anti-vibration clamps

Plastiques pour colliers de fixation anti-vibratoire

Plastici per collari fissatubo anti-vibrazioni



DN	SERIE	GROUP GRUPO	Part n° Referencia
12.7	L	4	AML401270
14	L	4	AML401400
19	L	4	AML401900
22	L	6	AML602200
28	L	6	AML602800
30	L	6	AML603000

Abrazaderas Serie ligera TrΔle

Clamps for pipe - TrΔle
Colliers de fixation TrΔle
Collari Serie leggera TrΔle



Chapas inferiores, serie ligera

Lower plate simple, light series

Plaques inférieures à souder série légère

Piastra inferiori, serie leggera



GROUP GRUPO	Part n° Referencia
1	APIN1
2	APIN2
3	APIN3
4	APIN4
5	APIN5
6	APIN6

Tornillos cabeza hexagonal, serie ligera reforzada

Hexagonal bolt, light series reinforced

Vis hexagonale, série légère renforcée

Vite esagonale, serie leggera rinforzata



THREAD ROSCA	GROUP GRUPO	Part n° Referencia
M6	1	AVTE1
M6	2	AVTE2
M6	3	AVTE3
M6	4	AVTE4
M6	5	AVTE5
M6	6	AVTE6

Chapa agrupar abrazaderas simples

Jointed plate for simple clamp

Plaque à joindre pour collier simple

Piastra per collare fissatubo singolo



GROUP GRUPO	CLAMP QTY. N° ABRAZADERAS	Part n° Referencia
1	10	APAG1
2	10	APAG2
3	10	APAG3

Tornillo apilar ligera

Light serie screw to pile up

Vis pour empiler série légère

Vite per piastra componibili. Serie leggera



THREAD ROSCA	GROUP GRUPO	Part n° Referencia
M6	1	AVTA1
M6	2	AVTA2
M6	3	AVTA3
M6	4	AVTA4
M6	5	AVTA5

Chapas superiores, serie ligera reforzada

Upper plate, light series reinforced

Plaques supérieures de protection, série légère renforcée

Piastra superiori, serie leggera rinforzata



GROUP GRUPO	Part n° Referencia
1	APS1
2	APS2
3	APS3
4	APS4
5	APS5
6	APS6

Tornillos cabeza Allen, serie ligera

Simple Allen bolt, light series

Vis tête six pans creux Allen série légère

Vite Allen, serie leggera



THREAD ROSCA	GROUP GRUPO	Part n° Referencia
M6	1	AVTC1
M6	2	AVTC2
M6	3	AVTC3
M6	4	AVTC4
M6	5	AVTC5
M6	6	AVTC6

Chapa atornillar Abr. Simples

Elongated weld plate

Plaque à visser

Piastra per fissaggio



GROUP GRUPO	Part n° Referencia
1	APT1
2	APT2
3	APT3
4	APT4
5	APT5

Chapa apilar ligera

Light serie plate to pile up

Plaque pour empiler série légère

Piastra componibili. Serie leggera



GROUP GRUPO	Part n° Referencia
1	APA1
2	APA2
3	APA3
4	APA4
5	APA5
6	APA6

Abrazaderas Serie doble TrΔle

Clamps double Series - TrΔle

Colliers Serie double TrΔle

Collari Serie doppi TrΔle



Abrazaderas dobles completas

Double clamp - parallel

Colliers de fixation doubles complets

Collare fissatubo doppio completo



DN	GROUP GRUPO	UNITS PER BAG CANTIDAD / BOLSA	Part n° Referencia
6	1	10	AZCFS06
8	1	10	AZCFS08
10	1	10	AZCFS10
12	1	10	AZCFS12
1/4"	2	10	AZCFS13.2
14	2	10	AZCFS14
15	2	10	AZCFS15
16	2	10	AZCFS16
3/8"	2	10	AZCFS16.7
18	2	10	AZCFS18
19	3	10	AZCFS19
20	3	10	AZCFS20
1/2"	3	10	AZCFS21.3
22	3	10	AZCFS22
25	3	10	AZCFS25
3/4"	4	10	AZCFS26.7
28	4	10	AZCFS28
30	4	10	AZCFS30
32	5	10	AZCFS32
1"	5	10	AZCFS33.3
35	5	10	AZCFS35
38	5	10	AZCFS38
40	5	10	AZCFS40
42	5	10	AZCFS42

Chapas inferiores

Double lower plate

Plaques inférieures à souder doubles

Piastre inferiori



THREAD ROSCA	GROUP GRUPO	Part n° Referencia
M6	1	ADPIN1
M8	2	ADPIN2
M8	3	ADPIN3
M8	4	ADPIN4
M8	5	ADPIN5

Chapas superiores

Double upper plate

Plaques supérieures de protection doubles

Piastre superiori



GROUP GRUPO	Part n° Referencia
1	ADPS1
2	ADPS2
3	ADPS3
4	ADPS4
5	ADPS5

Tornillos cabeza hexagonal

Double hexagonal bolt

Vis hexagonale

Vite esagonale



THREAD ROSCA	GROUP GRUPO	Part n° Referencia
M6	1	ADVTE1
M8	2	ADVTE2
M8	3	ADVTE3
M8	4	ADVTE4
M8	5	ADVTE5

Abrazaderas Serie doble TrΔle

Clamps double Series - TrΔle

Colliers Serie double TrΔle

Collari Serie doppi TrΔle



Plásticos polipropileno dobles

Double plastics polypropylene

Double plastiques polypropylene

Plastica polipropilene



DN	GROUP GRUPO	Part n° Referencia
6	1	AD106C
8	1	AD108C
10	1	AD110C
12	1	AD112C
1/4"	2	AD213.2C
14	2	AD214C
15	2	AD215C
3/8"	2	AD216.7C
16	2	AD216C
18	2	AD218C
19	3	AD319C
20	3	AD320C
1/2"	3	AD321.3C
22	3	AD322C
25	3	AD325C
3/4"	4	AD426.7C
28	4	AD428C
30	4	AD430C
32	5	AD532C
1"	5	AD533.3C
35	5	AD535C
38	5	AD538C
40	5	AD540C
42	5	AD542C

Chapa apilar doble

Double series plate to pile up

Plaque pour empiler série double

Piastra componibili. Serie doppia



GROUP GRUPO	Part n° Referencia
1	ADPA1
2/3/4/5	ADPA2

Chapa agrupar abrazaderas dobles

Jointed plate for double clamp

Plaque à joindre pour collier double

Piastra gruppo per collare fissatubo doppio



THREAD ROSCA	GROUP GRUPO	CLAMP QTY. N° ABRAZADERAS	Part n° Referencia
M6	1	5	ADPAG1
M8	2	2	A2DPIN2
M8	2	3	A3DPIN2
M8	2	5	ADPAG2
M8	3	3	A3DPIN3
M8	3	5	ADPAG3

Tornillo apilar doble

Double series screw to pile up

Vis pour empiler série double

Vite per piastra componibili. Serie doppia



THREAD ROSCA	GROUP GRUPO	Part n° Referencia
M8	2	ADVTA2
M8	3	ADVTA3
M8	4	ADVTA4

Abrazaderas Serie pesada TrΔle

Clamps heavy Series - TrΔle

Colliers Série lourde TrΔle

Collari Serie pesante TrΔle



Abrazadera completa, serie pesada

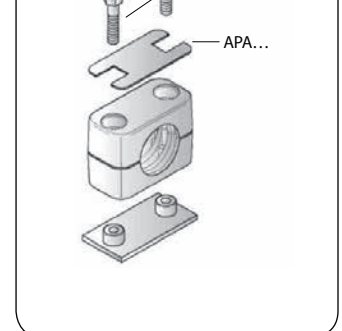
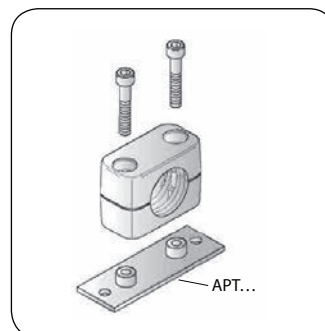
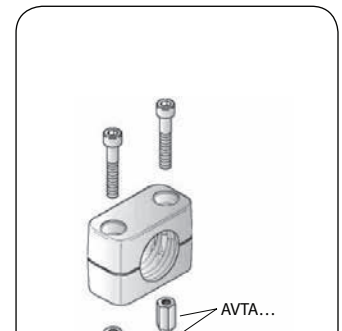
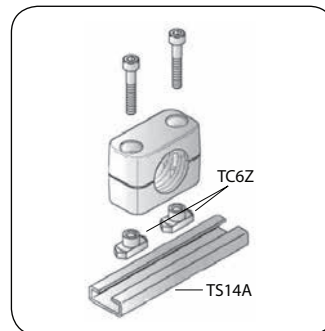
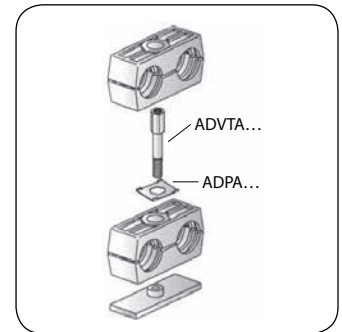
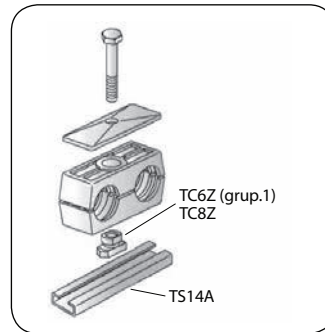
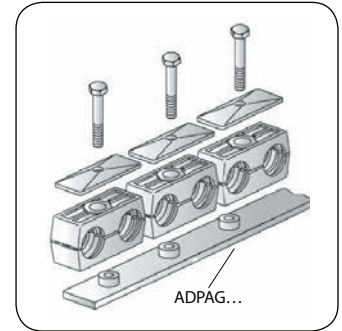
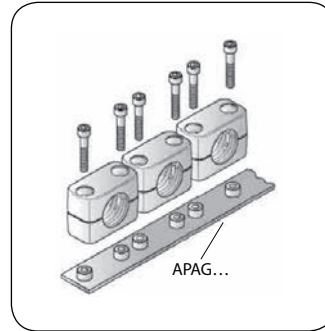
Heavy clamp, heavy series

Collier de fixation simple complet, série lourde

Collare fissatubo serie pesante completo



DN	GROUP GRUPO	Part n° Referencia
6	1	AZCPS06
8	1	AZCPS08
10	1	AZCPS10
12	1	AZCPS12
1/4"	1	AZCPS13.2
14	1	AZCPS14
15	1	AZCPS15
16	1	AZCPS16
3/8"	1	AZCPS17.2
18	1	AZCPS18
20	2	AZCPS20
1/2"	2	AZCPS21.3
22	2	AZCPS22
25	2	AZCPS25
3/4"	2	AZCPS26.7
28	2	AZCPS28
30	2	AZCPS30
32	3	AZCPS32
1"	3	AZCPS33.3
35	3	AZCPS35
38	3	AZCPS38
40	3	AZCPS40
42	3	AZCPS42
1"1/4	4	AZCPS42.4
45	4	AZCPS45
48-1" 1/2	4	AZCPS48
1"1/2	4	AZCPS48.4
50	4	AZCPS50
55	4	AZCPS55
60	4	AZCPS60
2"	4	AZCPS60.3
65	4	AZCPS65
70	4	AZCPS70



Abrazaderas Serie pesada TrΔle

Clamps heavy Series - TrΔle
Colliers Série lourde TrΔle
Collari Serie pesante TrΔle



Chapas inferiores, serie pesada

Lower plate, heavy series

Plaques inférieures à souder, série lourde

Piastre inferiori, serie pesante



THREAD ROSCA	GROUP GRUPO	Part n° Referencia
M10	1	APINP1
M10	2	APINP2
M10	3	APINP3
M12	4	APINP4

Chapas superiores, serie pesada

Upper plate, heavy series

Plaques supérieures de protection, série lourde

Piastre superiori, serie pesante



GROUP GRUPO	Part n° Referencia
1	APSP1
2	APSP2
3	APSP3
4	APSP4

Tornillos cabeza hexagonal, serie pesada

Hexagonal bolt, heavy series

Vis hexagonale, série lourde

Vite esagonale, serie pesante



THREAD ROSCA	GROUP GRUPO	Part n° Referencia
M10	1	AVTEP1
M10	2	AVTEP2
M10	3	AVTEP3
M12	4	AVTEP4

Plásticos polipropileno, serie pesada

Plastics polypropylene, heavy series

Plastique polypropylene, série lourde

Plastica polipropilene, serie pesante



DN	GROUP GRUPO	Part n° Referencia
6	1	AMPP106C
8	1	AMPP108C
10	1	AMPP110C
12	1	AMPP112C
1/4"	1	AMPP113.2C
14	1	AMPP114C
15	1	AMPP115C
16	1	AMPP116C
3/8"	1	AMPP117.2C
18	1	AMPP118C
20	2	AMPP220C
1/2"	2	AMPP221.3C
22	2	AMPP222C
25	2	AMPP225C
3/4"	2	AMPP226.7C
28	2	AMPP228C
30	2	AMPP230C
30	3	AMPP330C
32	3	AMPP332C
1"	3	AMPP333.3C
35	3	AMPP335C
38	3	AMPP338C
40	3	AMPP340C
42	3	AMPP342C
38	4	AMPP438C
42- 1" 1/4	4	AMPP442C
45	4	AMPP445C
48-1" 1/2	4	AMPP448C
50	4	AMPP450C
55	4	AMPP455C
2"	4	AMPP460.3C
65	4	AMPP465C
70	4	AMPP470C

Plásticos para abrazaderas anti-vibración

Plastic for anti-vibration clamps

Plastiques pour colliers de fixation
antivibratoire

Plastici per collari fissatubo anti-vibrazioni, serie
pesante



DN	SERIE	GROUP GRUPO	Part n° Referencia
35	S	4	AMS403500
38	S	4	AMS403800

Abrazaderas Serie pesada TrΔle

Clamps heavy Series - TrΔle
 Colliers Série lourde TrΔle
 Collari Serie pesante TrΔle



Chapa apilar Pesada

Heavy series plate to pile up

Plaque pour empiler série lourde

Piastra componibili, serie pesante



GROUP GRUPO	Part n° Referencia
1	APAP1
2	APAP2
3	APAP3
4	APAP4

Tornillo para serie pesada apilable

Screw to pile up heavy series

Vis à empiler série lourde

Vite per serie pesante impilabile



THREAD ROSCA	GROUP GRUPO	Part n° Referencia
M10	1	APVTA1
M10	2	APVTA2
M10	3	APVTA3
M12	4	APVTA4

Accesorios abrazaderas TrΔle

Accessories for clamps - TrΔle

Accessoires colliers TrΔle

Accessori per collari TrΔle



Accesorios carril

Accessories for lane

Accessories pour lane

Accessori per binario



THREAD ROSCA	SIZE TAMAÑO	DESCRIPTION DESCRIPCIÓN	Part n° Referencia
M6	--	Rail nut	TC6A
M8	--	Rail nut	TC8A
M10	--	Rail nut	TC10A
M12	--	Rail nut	TC12A
--	11x28	Mounting rail - 1m	TS11A
--	14x28	Mounting rail - 1m	TS14A
--	22x40	Mounting rail - 1m	TSP22

SERIE LIGERA
LIGHT SERIES



SERIE DOBLE
DOUBLE SERIES



SERIE PESADA
HEAVY SERIES

